



Powerful information for traders



## TRADE ANGLE STRATEGIES, LLC (TAS)

### TAS TRADING TOOLKIT™ INDICATORS SUITE OVERVIEW

*Thank you for your thoughtful evaluation of our world-class trading tools, the **TAS Trading Toolkit™**. This document overviews the basic capabilities of the indicators included in the **TAS Trading Toolkit™**. Please be sure to thoroughly familiarize yourself with the basic functionality of each separate indicator before progressing to live trading.*

*The Trade Angle Team*

Phone: 919-373-4278  
[Info@TradeAngle.com](mailto:Info@TradeAngle.com)



# TRADING SOFTWARE

***FOR SALE & EXCHANGE***

**[www.trading-software-collection.com](http://www.trading-software-collection.com)**

**Subscribe for FREE download 5000+ trading books.**

## **Mirrors:**

**[www.forex-warez.com](http://www.forex-warez.com)**  
**[www.traders-software.com](http://www.traders-software.com)**

## **Contacts**

**[andreybbrv@gmail.com](mailto:andreybbrv@gmail.com)**  
**[andreybbrv@hotmail.com](mailto:andreybbrv@hotmail.com)**  
**[andreybbrv@yandex.ru](mailto:andreybbrv@yandex.ru)**  
Skype: andreybbrv  
ICQ: 70966433



## DISCLAIMER & RISK WARNING

*This publication along with any charts and examples, is for educational purposes only and should ONLY be used to study the actions and activities of the markets. This publication is NOT designed to provide any investment advice or trading ideas and should not be used as such.*

***Trading can result in large losses and may not be an activity suitable for everyone.***

*Hypothetical or simulated performance results have certain inherent limitations. Unlike an actual performance record, simulated results do not represent actual trading. Also, since these trading setups may not have actually been executed, the results shown may have under or over compensated for the impact, if any, of certain market factors such as lack of liquidity.*

*To the best of their ability, room moderators will endeavor to discuss trades that they are about to make for their own accounts. However, because of timing, urgency, ongoing room commentary, technical limitations or any other reason, some positions will not be posted. Moderators may also be trading multiple accounts and/or have accounts or investments outside the scope of the trading and training room. In no case is any trading idea posted a recommendation or an opinion of what you should be doing. Moderators discuss trade ideas in the room for educational purposes only.*

*Simulated trading programs in general are also subject to the fact that they are designed with the benefit of hindsight. No representation is being made that any account will or is likely to achieve profits or losses similar to those shown.*

*The author(s), publisher(s) and room moderators are not providing investment or trading advice and do not make claims, promises, or guarantees that any suggestions, systems, trading strategies, or information will result in a profit, loss, or any other desired result. By virtue of your subscription, paid or otherwise, this information is being specifically provided at your request. All readers and room participants assume all risk, including but not limited to the risk of trading losses.*

*Earnings and economic releases posted in our trading and training rooms are typically provided by Briefing.com and are subject to change without notice. Please verify all earnings dates with an independent source of your choice. Please remember that all market commentary in our rooms is for educational purposes only and should not be construed as investment advice regarding the purchase or sale of securities, options, equities or any other financial instrument of any kind. Information for our market observations is obtained from sources believed to be reliable, but we do not warrant its completeness or accuracy, or warrant any results from the use for this or any information provided in our trading and training rooms.*

***THIS IS NOT A SOLICITATION TO BUY OR SELL SECURITIES. Always seek the advice of your professional investment advisor before making any investment decisions.***

©2007-2009, Trade Angle Strategies, LLC. All Rights Reserved. All materials contained on this site are protected by United States copyright law and may not be reproduced, distributed, transmitted, displayed, published or broadcast without the prior written permission of TR Marketing Group, Inc. or in the case of third party materials, the owner of that content. You may not alter or remove any trademark, copyright or other notice from copies of the content. However, you may download and print one copy for your personal, non-commercial use.



Powerful information for traders



## Real Time Guidance in Any Market—Tunable To Your Trading Style

We know the value of accurate and timely market-generated information. And to profitably trade, we think that you should also. Why? Because markets were created for commercial and institutional traders. Markets were created for them to make money from you.

But they cannot hide any more. You now possess the ultimate set of tools to help you trade with the institutional players—and take the guesswork out of your trading and trading plan. It's all there in the **TAS Trading Toolkit™**.

## The TAS Trading Toolkit™—Accurate, Intuitive, Timely and Responsive



Take a look at this chart. With just two of the tools in the **TAS Trading Toolkit™**, you not only clearly see where the market is bracketed and trading sideways (in the top pane), but you also know when the market is trending and where to adjust your stops during the trend. Additionally, you have a clear bias as to the direction that you should favor in terms of trade location (bottom pane).

And there's so much more to the **TAS Trading Toolkit™**: There are 10 interlocking and complementary indicators in all. This document will give you a basic overview of the indicator suite. Please read on.



## TAS Trading Toolkit™ Indicator Suite Overview

It takes institutional capital to move the markets and our job as traders and investors is to interpret what the institutional traders are doing. But in trading and investing, *price is only the messenger—not the entire message.*

So if “big money” is working hard to cover their tracks in the market, how do we know where they’re lurking? How do we determine what levels are of interest to them? Moreover, how do we determine this information *ahead of time*? The answer is simpler than you might think but for most, it takes sophisticated tools and specialized knowledge to interpret the market’s entire message.

**Trade Angle Strategies** has the answer—the **TAS Trading Toolkit™**. Our trading tools are the choice of top traders worldwide. These are the same tools that serve as the backbone of successful automated trading strategies and the choice of many professional and institutional managed account advisors.

## Benefits of Using the TAS Trading Toolkit™

Trading is an endeavor that is as unique of an experience to one person as it is to the next. However, when it comes to trading tools, traders tend to want them to timely and accurately perform five main functions:

- **Provide intelligence and insight** into the broader market structure while at the same time, helping us pinpoint precise entries
- **Speed up our analysis** of trading conditions in multiple time frames (and quite often in multiple trading instruments)
- **Improve our accuracy** in reading the market’s subtle clues of imminent change in market activity, regardless of time frame being observed
- **Tightly manage risk** in all trades while preserving profits in directional trades
- **Help traders relax, observe, interpret and trade high probability setups** while the computer does the laborious background analysis of the institutional trading levels, volume and volatility



## Not All Trading Tools Are Alike—And Neither Are All Traders...

As you are most likely aware, not all trading tools are alike. In fact, with the recent prevalence of algorithmic and auto trading systems in the marketplace, everyone these days is looking for an edge.

The **TAS Trading Toolkit™** was developed by a group of traders, mathematicians and programmers who had a broad understanding of the markets backed by actual institutional trading success. Their original goal was to take what they had learned over the decades and put those trading strategies into code to systematically auto trade the markets.

Their success in the automated systems trading arena is clearly demonstrated with the real-world and real-money track records in the **TAS Automated Trading Systems**. What's important to note though is that the **backbone trading methods** behind these successful systems is the **TAS Trading Toolkit™**.

As a discretionary trader, you now have access to the same tools that are driving some of the most successful trading systems in the world: **TAS Trading Toolkit™** will help you to:

- ▶ *Understand the two phases of market activity—the only two events that repeatedly occur in the market*
- ▶ *Locate where the institutional traders have a vested interest to trade*
- ▶ *Allow the trade to come to you on your terms—rather than chase price after the move is well underway and developed*
- ▶ *Trade in the same direction as the institutional players—in the tradable instruments and timeframes that are of interest to you*
- ▶ *Avoid neutral, low-odds areas in the market—saving you money, energy and frustration on “go-nowhere” trades and investments*
- ▶ *Improve your reward-to-risk in every trade or investment you enter*
- ▶ *Get on the right side of a trade when a market is not trending*
- ▶ *Professionally interpret volume and volatility for intraday and longer-term trades*
- ▶ *Trade alongside professional traders in real by understanding what they are looking at*
- ▶ *Time your trades with the market professionals by understanding where they are lending support to declining market and where they are unloading their contracts / shares*
- ▶ *Trade your trading style, trading instruments, and trading plan—not someone else's*



## TAS Price Compression Levels™ (PCLs™), a.k.a. “Statics”

TAS Price Compression Levels™ (PCLs™) display eight horizontal lines and are a measure of potential, high-probability potential support (demand) and resistance (supply) areas in the market. The values are determined using daily data or a defined time range within a 24-hour period.

The levels are nicknamed “Statics” in the sense that they are calculated at the beginning of the day and do not change until the next day. This is invaluable information for determining potential day trading targets in either direction.

**NOTE: PCLs™** The levels are only applicable to **intraday** charts.



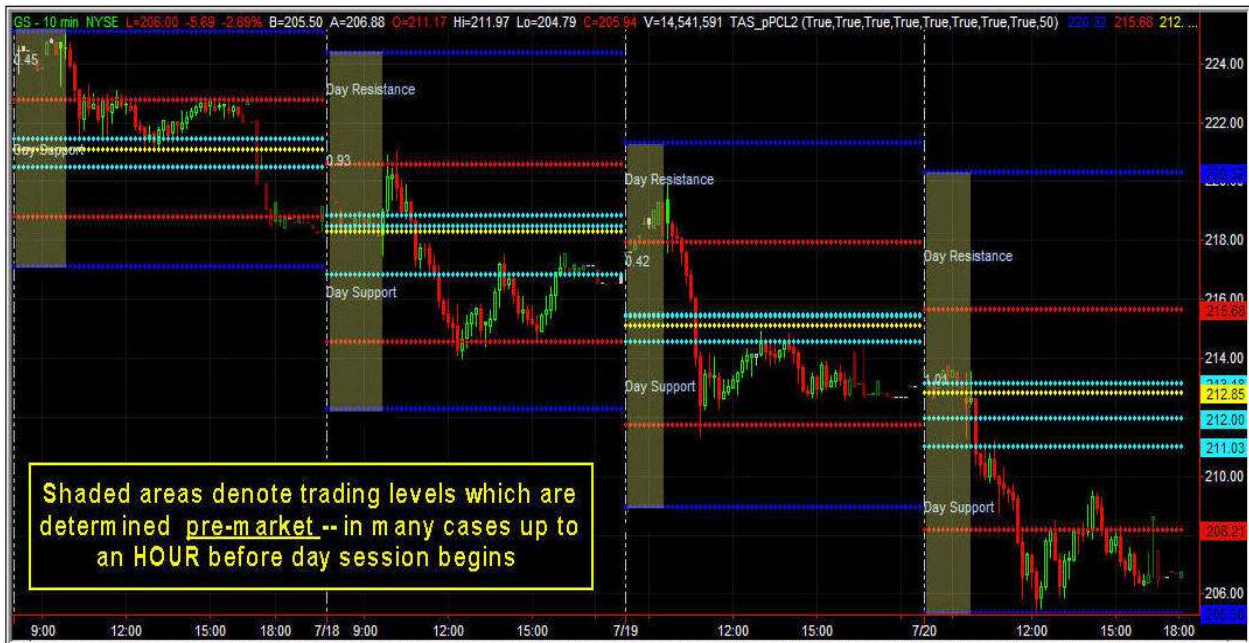


## TAS Price Compression Levels™ (PCLs™), a.k.a. “Statics,” Con’t.

### Configurable Inputs for TAS Static Price Compression Levels™

<b>PlotR1:</b>	Displays the lower resistance line
<b>PlotR2:</b>	Displays the middle resistance line
<b>PlotR3:</b>	Displays the highest resistance line
<b>PlotS1:</b>	Displays the highest support line
<b>PlotS2:</b>	Displays the middle support line
<b>PlotS3:</b>	Displays the lowest support line
<b>PlotC1:</b>	Displays the first center line PCL™
<b>PlotC2:</b>	Displays the second center line PCL™
<b>PlotC3:</b>	Displays the third center line PCL™
<b>Plot4:</b>	Displays the fourth center line PCL™

TAS PCLs™ simplify the immediate levels of volume analysis, volume aggregation and multiple-time frame confluence and display accurate targets of demand and supply levels for the day’s trading.



Four day’s worth of PCLs displayed on 10-min. chart of Goldman Sachs (GS)



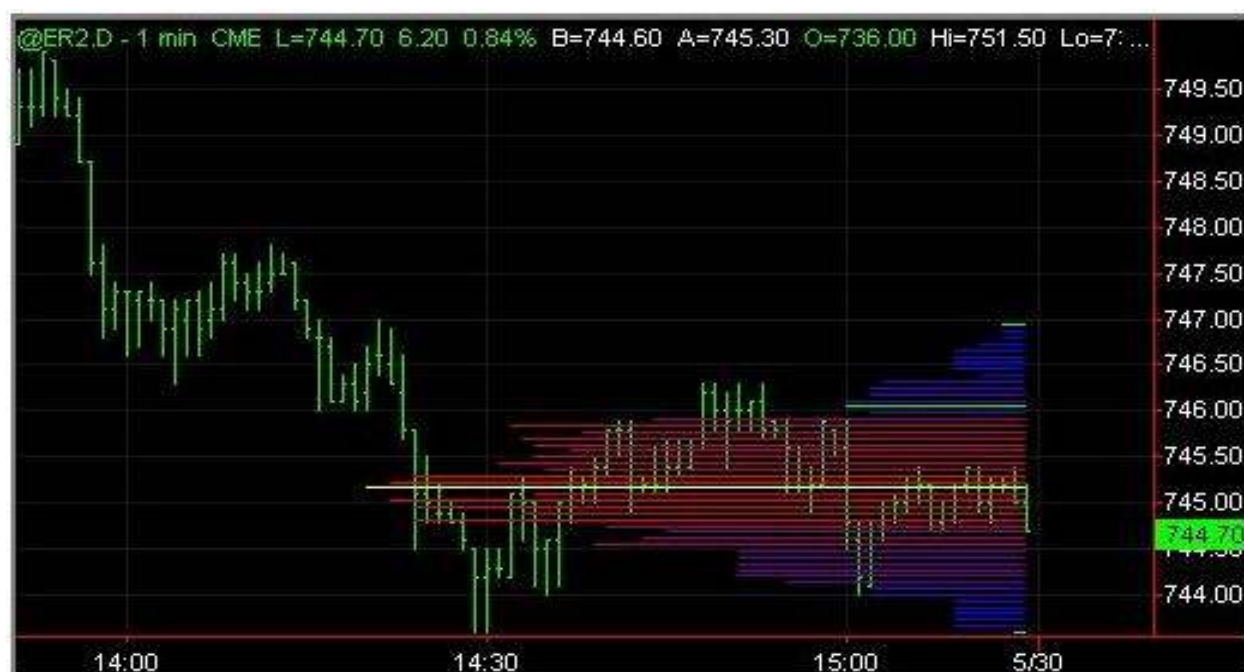


## TAS Market Map™

The **TAS Market Map™** indicator shows a color-coded version of TAS's proprietary volume-at-price map. These maps employ the concepts of statistical probability distribution and have their basis in Auction Market Theory and Market Profile®.

**TAS Market Maps™** appear as sideways histograms overlaid onto the price data, revealing an intuitive color-rich display of where volume is accumulating—or not. The maps reflect the price action relative to volume traded within the delineated map area.

Red (wider horizontally) areas in the maps reflect a *relatively* higher volume of contracts (or shares) traded, while blue (narrower) areas reflect *relatively* lower-volume price moves.



*TAS Market Map™ on 1-minute Russell Futures*

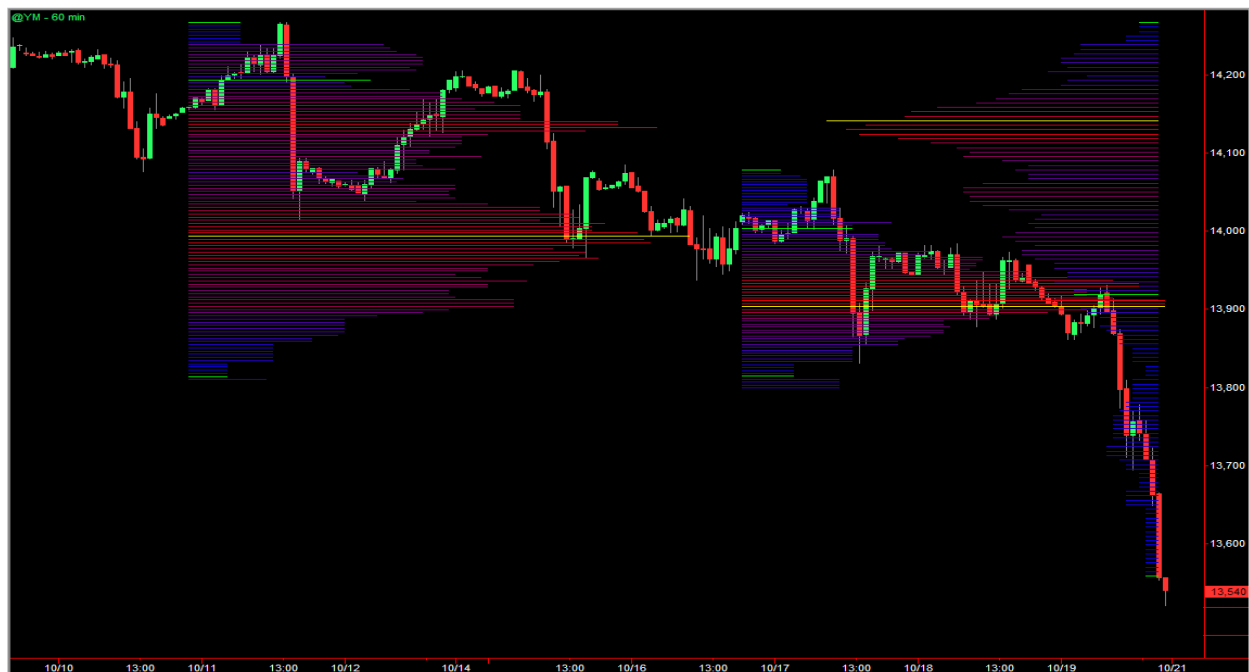
The yellow line in the maps indicates the specific price at which most of the volume action took place within the context of the bars being evaluated. The green lines indicate the boundary between the high-action (**red**) areas and the low-action (**blue**) areas.



## TAS Market Map™, Con't.

One of the great inherent advantages of the **TAS Market Map™** over many other so-called “market profiling” types of charting options is the ability to create multiple, simultaneously displayed maps. The following chart shows an example of this unique display concept.

These multiple maps give traders key insights into areas where the market is likely to move sideways versus where the market is likely to trend. The maps are also very precise in indicating where the market is likely to move slowly and develop horizontally through time—versus where the market is likely to move rapidly through price. Multiple maps make this possible by displaying a confluence of areas of institutional interest.



*Multiple TAS Market Maps™ on 60-minute Dow Futures*

Notice how the maps clearly delineate where the market has potential to develop efficiently through time—and move inefficiently through price. These slow horizontal moves and faster vertical moves are a vital clue and edge for traders in all timeframes. This is critical information for traders to have because the markets on trade in two phases: horizontally or

# TRADING SOFTWARE

***FOR SALE & EXCHANGE***

**[www.trading-software-collection.com](http://www.trading-software-collection.com)**

**Subscribe for FREE download 5000+ trading books.**

## **Mirrors:**

**[www.forex-warez.com](http://www.forex-warez.com)**  
**[www.traders-software.com](http://www.traders-software.com)**

## **Contacts**

**[andreybbrv@gmail.com](mailto:andreybbrv@gmail.com)**  
**[andreybbrv@hotmail.com](mailto:andreybbrv@hotmail.com)**  
**[andreybbrv@yandex.ru](mailto:andreybbrv@yandex.ru)**  
Skype: andreybbrv  
ICQ: 70966433



## TAS Market Map™, Con't.

vertically. What the maps clearly reveal is that markets have a tendency to trade slowly and horizontally within the range of maps. And they trade rapidly and vertically outside of the boundaries of maps.

The multiple **TAS Market Maps™** are especially intuitive the larger in larger time frames in terms of orienting traders to the general “tone” and “tempo” of the market.

### Configurable Inputs of the TAS Market Map™

<b>Bar1:</b>	Sets the number of price bars where the base of the map should start from. In the preceding chart, this was set to 2
<b>Bar2:</b>	Sets the number of price bars where the peak of the map should end at. In the preceding chart, this was set to 50 (off the left of the image)
<b>NumBins:</b>	This setting adjusts how many horizontal lines will appear in the histogram (on the vertical scale)

The first chart in this section displays a left-facing market map. For a right-facing map, just make  $\text{Bar2} < \text{Bar1}$  (adjust the Bar2 setting to be less than the Bar1 setting). The second chart in this section shows both right-facing and left-facing maps simultaneously displayed in one chart. This is the ultimate feature in evaluating institutional trading levels.



## TAS Swing Map™

The **TAS Swing Map™** indicator shows a color-coded version of TAS's proprietary volume-at-price map. These maps employ the concepts of statistical probability distribution and have their basis in Auction Market Theory and Market Profile®.

**TAS Swing Maps™** appear as sideways histograms overlaid onto the price data, revealing an intuitive color-rich display of where volume is accumulating—or not accumulating—which is a very important distinction that traders need to make. The maps reflect the price action relative to volume traded within the delineated map area.

**Red** (wider horizontally) areas in the maps reflect a *relatively* higher volume of contracts (or shares) traded, while **blue** (narrower) areas reflect *relatively* lower-volume price moves.

The **difference** between **TAS Market Maps™** and **TAS Swing Maps™** is that the swing maps self-adjust based on recent swings (see note on swings at the end of this section). In other words, swing maps adjust parameters the Bar1 and Bar2 settings based on dynamic movements in the market under observation.

To understand this concept in greater depth, let's take a look at the configurable settings available in **TAS Swing Maps™**.

### Configurable Inputs for TAS Swing Map™

<b>MinSignal_123:</b>	Either 1 (weak), 2 (medium), or 3 (strong) signals will be considered when forecasting market swings
<b>Length:</b>	Sets the number of bars to consider when forecasting swings
<b>NumBins:</b>	Sets how many horizontal lines will appear in the histogram (on the vertical scale)
<b>SwingAtBase:</b>	Sets the recent swing number for the base of the histogram. 0 means the latest price bar, 1 means the 1 <sup>st</sup> swing back, 2 means 2 <sup>nd</sup> swing back, etc.
<b>SwingAtPeak:</b>	Sets the recent swing number for the peak of the histogram. 0 means the latest price bar, 1 means the 1 <sup>st</sup> swing back, 2 means 2 <sup>nd</sup> swing back, etc.



## TAS Swing Map™, Con't.

What these settings show us is that you now have a way to dynamically profile a market based on inputs and look back periods that are relevant to you and your individual trading.

### Swing Highs and Swing Lows

TAS has developed and uses a proprietary algorithm for determining swings in price. It differs from the *traditional* swings in price in that it is very effective at eliminating price “noise” in charts. This feature helps traders ignore noise and focus on the overall price movement in both sideways and trending markets.

The traditional technical definition of a [price] **swing high** is a price formation where a peak high in price is preceded and followed by a lower high on both sides of a peak price high. The traditional technical definition of a [price] **swing low** is a price formation where a peak low in price is preceded and followed by a higher low on both sides of a peak price low. The following chart illustrates some swing highs (SH) and swing lows (SL):



*Example of candlestick chart with swing highs and swing lows marked*



## TAS Swing Map™, Con't.

While the traditional swing high/low markers provide valuable information, we want to be careful not to “overweigh” the information. The **TAS Approach to Trading™** smoothes out the noise with its proprietary algorithms that are used in the both the **TAS Dynamic Profile™** and **TAS Floating Price Compression Levels™** indicators. Let’s take a look at these concepts in more detail.

The following chart shows an example of the **TAS Swing Map™** indicator where the parameters **SwingAtBase** is set to 0 and **SwingAtPeaks** is set to 3.



*TAS Swing Map™ on 5-minute S&P futures before a new swing is detected*

The next chart shows how the map dynamically moves and shifts to the right when a new swing occurs. This new map encompasses the first two swings in the preceding chart—plus the new swing.



## TAS Swing Map™, Con't.

Notice how the peak volume distribution area (denoted by the yellow horizontal line) encompasses trading data from ~10:45 to 13:30. When a new swing is detected by the algorithm, the entire profile shifts to the right to reveal new information about the market.



*The same TAS Swing Map™ on 5-minute S&P futures after a new swing is detected*

This dynamic movement of maps allows traders to stay focused on new trading information as the market reveals itself.

Notice the key difference between these two maps. In the first chart, there was a single price distribution with one high-volume node (denoted by the horizontal yellow line). In the second chart, a second high-volume node is starting to develop (between 965 and 970). This will become a key reference area as price approaches this area in the future. Additionally, the market will tend to move faster between 970 and 975 than it will between 965 and 970 (more on this concept later).





## TAS Floating Price Compression Levels™ (FPCLs™), a.k.a. “Floaters”

This indicator is similar to the **TAS Static Price Compression Levels™ (SPCLs™)** indicator but differs in that new **SPCLs™** are calculated when new swings in the market have been forecast. The **SPCLs™** are calculated from current price where a swing is occurring back to the price at the last wing.

**TAS Floating Price Compression Levels™ (FPCLs™)** are dynamic and move/change with varying market conditions. We use a proprietary “Power RSI” algorithm to determine when to move the Floaters to new levels. In the following chart, you can see this shift in the levels at 14:30. This dynamic indicator action is not time-based which makes it unique as it tracks the market flow based on its own dynamic price movement.

This is an excellent tool for determining floating or dynamic support (demand) and resistance (supply) areas in the market.

**NOTE:** This indicator is only applicable to **intraday** data.



*TAS Floating Price Compression Levels™ on 1-minute Russell Futures*



## TAS Floating Price Compression Levels™, Con't.

### Configurable Inputs for TAS Floating Price Compression Levels™

<b>MinSignal_123:</b>	Either 1 (weak), 2 (medium), or 3 (strong) signals will be considered when forecasting market swings
<b>Length:</b>	Sets the number of bars to consider when forecasting swings
<b>PlotR1:</b>	Displays the lower support/resistance line (on/off)
<b>PlotR2:</b>	Displays the middle support/resistance line (on/off)
<b>PlotR3:</b>	Displays the highest support/resistance line (on/off)
<b>PlotS1:</b>	Displays the highest support/resistance line (on/off)
<b>PlotS2:</b>	Displays the middle support/resistance line (on/off)
<b>PlotS3:</b>	Displays the lowest support/resistance line (on/off)
<b>PlotC1:</b>	Displays the first center line PCL (on/off)
<b>PlotC2:</b>	Displays the second center line PCL (on/off)
<b>PlotC3:</b>	Displays the third center line PCL (on/off)
<b>Plot4:</b>	Displays the fourth center line PCL (on/off)



## TAS Swing Price Compression Levels™ (SPCLs™)

This indicator is very similar to the **TAS Static Price Compression Levels™ (SPCLs™)** but in this indicator the new **PCLs™** are calculated when new swings in the market have been forecast. The **PCLs™** are calculated from current price where swing is occurring back to the price from a specified and configurable number of swings ago.

**TAS SPCLs™** are dynamic and move/change with varying market conditions. Users may manually select the number of swings they want to look back on by adjusting the **SwingsBack** parameter. In the following chart, you can see this shift in the levels at 14:30.

NOTE: This indicator is only applicable to **intraday** data.



TAS Swing Price Compression Levels™ on 1-minute Russell Futures



## TAS Swing Price Compression Levels™, Con't.

### Configurable Inputs for TAS Swing Price Compression Levels™

<b>MinSignal_123:</b>	Either 1 (weak), 2 (medium), or 3 (strong) signals will be considered when forecasting market swings
<b>Length:</b>	The number of bars to consider when forecasting swings
<b>SwingsBack:</b>	The number of swings back to calculate PCLs™
<b>PlotR1:</b>	Displays the lower resistance line
<b>PlotR2:</b>	Displays the middle resistance line
<b>PlotR3:</b>	Displays the highest resistance line
<b>PlotS1:</b>	Displays the highest support line
<b>PlotS2:</b>	Displays the middle support line
<b>PlotS3:</b>	Displays the lowest support line
<b>PlotC1:</b>	Displays the first center line PCL™
<b>PlotC2:</b>	Displays the second center line PCL™
<b>PlotC3:</b>	Displays the third center line PCL™
<b>Plot4:</b>	Displays the fourth center line PCL™



## TAS Dynamic Profile™ (a.k.a. "Boxes")

This indicator shows several small versions of the **TAS Market Map™** at various points along a price line. New maps are created when new swings are forecast in the market. Maps are calculated based on the price action from the previous map.



*TAS Dynamic Profile™ on 1-minute Russell Futures*

The top (red) line indicates the top of the red (high-value) area in a price map. It is equivalent to the top green horizontal line in the photo above of the example **TAS Market Map™**. The center (cyan) line indicates the center of the high value area (yellow line in the market map photo), and the bottom (blue) line indicates the bottom of the high value area (bottom green line).



## TAS Dynamic Profile™ (a.k.a. "Boxes™"), Con't.

### Configurable Inputs for TAS Dynamic Profile™

<b>MinSignal_123:</b>	Either 1 (weak), 2 (medium), or 3 (strong) signals will be considered when forecasting market swings
<b>Length:</b>	The number of bars to consider when forecasting swings
<b>MapLength:</b>	The number of bars behind each map used to create it. This is equivalent to the Length parameter for the TAS Market Map™ indicator

**TAS Dynamic Profile™** is a volume-based analysis trading tool that dramatically speeds up intraday trading analysis in multiple time frames to suit your trading style and risk tolerance.

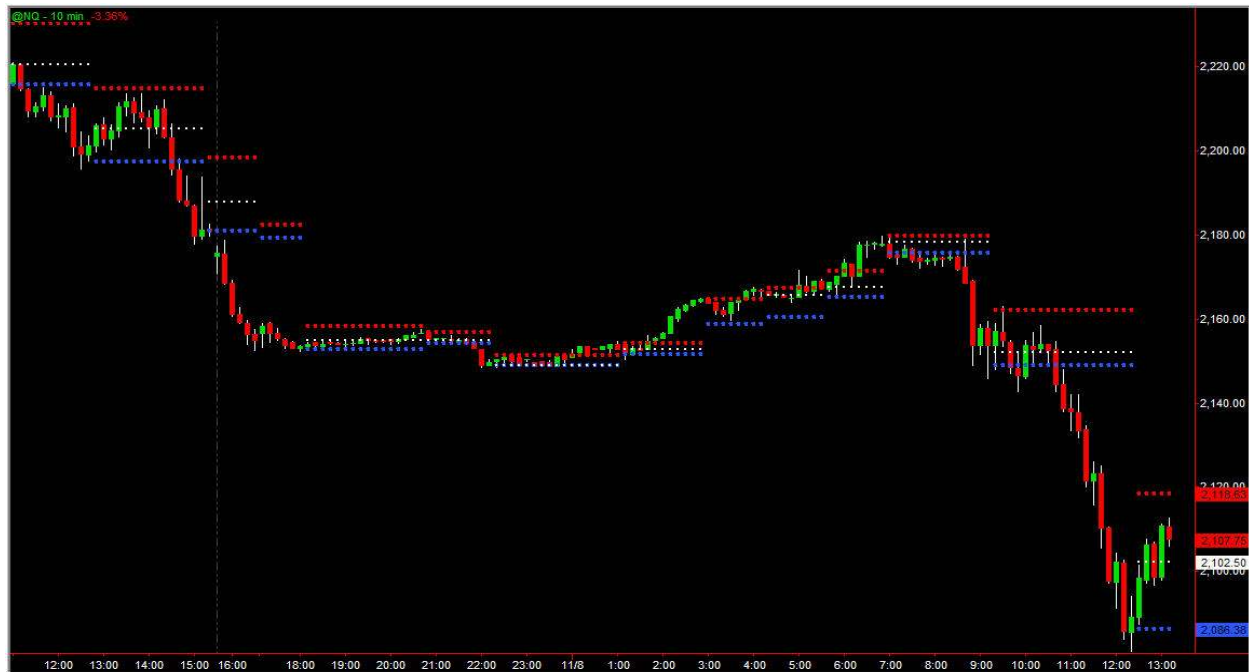
Notice how in the following chart it's clear where the market will pause and trade in a range vs. where it starts to trend.

The basic way we use this indicator in our own trading is:

- a) When price is bracketed between the **Boxes™**, we short the highs and buy the lows— with a bias towards the prevailing trend (i.e., if the market is already down-trending, we will tend to favor the short side vs. the long side)
- b) When price moves outside a set of **Boxes™**, we take the directional trade until a new set of **Boxes™** has formed



## TAS Dynamic Profile™ (a.k.a. "Boxes™"), Con't.



*TAS Dynamic Profile™ on 10-minute NASDAQ Futures*

Also notice how the height of the **Boxes™** varies from each set of **Boxes™** to the next. As a guideline, the tighter the range, the lower the volatility. The wider the range, the higher the volatility.



## TAS Dynamic Profile™ (a.k.a. "Boxes"), Con't.



*TAS Dynamic Profile™ on 15-minute Russell Futures*

Another concept to notice is that when price moves away from a set of **Boxes™**, the movement speeds up directionally. This is the “tipping point” in the market where price moves from slow and horizontal—to fast and directional.





## TAS VIX™ Con't.

Unlike the CBOE VIX, our proprietary volatility indicator, the **TAS VIX™**, is portable to all markets and gives us the true measure of buying and selling pressures in the marketplace. The **TAS VIX™** is displayed in the lower panel of the following charts.



*TAS VIX™ on 3-minute S&P Futures*

Notice how when the **TAS VIX™** rises above the reference **red** line in the lower panel of the chart, the markets move lower—and vice versa. This red line is a selectable moving average of the **TAS VIX™**. Our typical setting for this is 50 periods.

The **TAS VIX™** is a superior tool for helping traders identify and stay with trending market conditions.

More examples follow.



## TAS VIX™ Con't.



*TAS VIX™ on 3-minute S&P Futures*

### General Guidelines:

- a) As a general rule, the greater the relative distance the **TAS VIX™** is away from the reference **red** line, the more directional and/or volatile the market will be.
- b) The closer the **TAS VIX™** is to the reference **red** line, the more range-bound or horizontal the market will be.



## TAS VIX™ Con't.



TAS VIX™ on 3-minute S&P Futures



## TAS VIX Differential™

The **TAS VIX Differential™** is our proprietary market timing and trade management indicator. We use this dynamic tool as the backbone of our entry and exit methodology.

The **TAS VIX Differential™** indicator graphically displays the difference between a pseudo-VIX calculation and its moving average. It is displayed in green below the price, its moving average is displayed in red, and the zero line is displayed in blue. This is a very simple but highly accurate indicator for timing entry/exit triggers when this crosses its moving average.

Compared to **TAS VIX™**, this indicator shows that when the price moves and VIX doesn't that there's a strong potential for a reversal.

If price moves a lot but the **TAS VIX Differential™** is not moving, this indicates a potential reversal situation.

Another factor we look for is where the lines are appearing in relation the blue reference (zero-line). If the lines are below, the market is biased towards bullishness; if the lines are above, the market is biased towards bearishness.



*TAS VIX Differential™ on 3-minute S&P Futures*



## TAS VIX Differential™, Con't.

### Configurable Inputs for TAS VIX Differential™

<b>Length:</b>	Sets how many bars back to look at recent price movement
<b>Smooth:</b>	Sets how many bars to use for smoothing the resulting curve. A value of 1 will provide the timeliest values, but may appear jagged. Higher values will smooth the curve but may increase lag.
<b>MABars:</b>	Sets the number of bars for internal moving average calculation
<b>NormDays:</b>	Sets how many days to use internally for price normalization. A number of days that provides a good average of highs and lows for the price should be used. In the foregoing chart, NormDays is set to 5 which should suffice for most charts.
<b>GMABars:</b>	Sets the number of bars for the moving average of the difference (the red curve)



TAS VIX Differential™ on 5-minute equity (AKAM)



Powerful information for traders



### TAS VIX Differential™, Con't.



TAS VIX Differential™ on 5-minute equity (MSFT)



## TAS I-Ratio™

The **TAS I-Ratio™** is a leading indicator that forecasts short-term price movements. It is useful for gauging the best trade entries and exits.



*TAS I-Ratio™ on 1-minute Russell futures*

### Configurable Inputs for TAS I-Ratio™

<b>RangeBars:</b>	Sets how many bars back to look at recent price movement
<b>AvgBars:</b>	Sets how many bars to use when averaging recent price action
<b>MABars:</b>	Sets the number of bars for the moving average curve (red line)



## TAS VDVR™

This indicator is a volume-weighted combination of **TAS Volume Delta™** (not included in the **TAS Trading Toolkit™**) and **TAS I-Ratio™**.



*TAS VDVR™ on 1-minute Russell futures*

### Configurable Inputs for TAS VDVR™

<b>Length:</b>	Sets how many bars back the TAS Volume Delta™ looks back
<b>RangeBars:</b>	Sets how many bars back the TAS I-Ratio™ looks back
<b>AvgBars:</b>	Sets how many bars to use when averaging recent price action
<b>Smooth:</b>	Sets how many bars to use for smoothing the resulting curve. A value of 1 will provide the timeliest values, but may appear jagged. Higher values will smooth the curve but may increase lag.
<b>NormDays:</b>	Sets how many days to use internally for price normalization. A number of days that provides a good average of highs and lows for the price should be used. In the foregoing chart, NormDays is set to 5 which should suffice for most charts.





## Thank you!

*Thank you for your thoughtful review of our **TAS Trading Toolkit™ Overview**. We invite you to contact us to see how we use these trading tools in live, real-time trading environments—using our own trading capital—in our live trading and training rooms.*

Happy Trading !

P.S. If you can think of ways we can improve this manual or our vast array of services to you, please contact us at [info@tradeangle.com](mailto:info@tradeangle.com) or visit our website at [www.tradeangle.com](http://www.tradeangle.com).

We are here to help.