

Welcome To Ricxa Flow User Manual (Mar.2013)

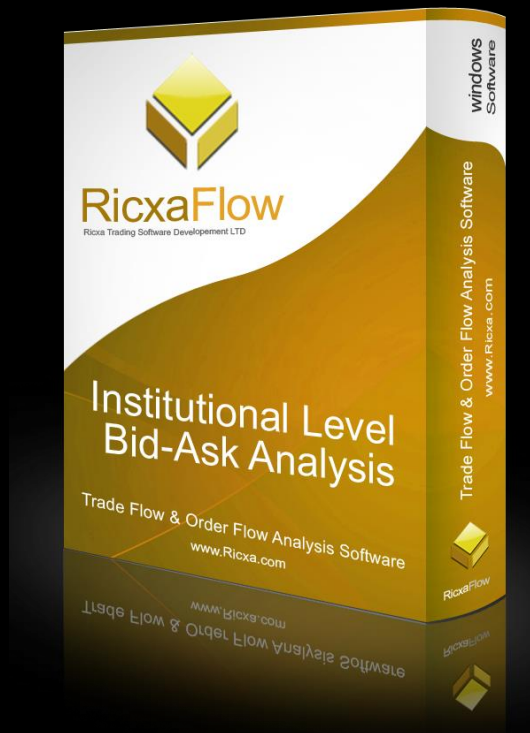


Table of Contents:

1. Introduction.
2. Version Comparison.
3. System Requirements.
4. Installation.
5. User Interface.
6. Ricxa Flow Chart.
7. Ricxa Flow Chart Setting.
8. Random Images.



Introduction

RICXA® (RICXA Trading Software Development LTD) is a development and research company founded by traders for traders, focusing on Bid-Ask Analysis, Day-Trading Strategies, Back-Testing and Automated Trading.

Our brand institutional level flagship product is RICXAFlow® - a top of the line trade flow and order flow analysis platform.

Included in RICXA® brand are the RICXA-Trader®, RICXA Market-Depth Analyzer® and RICXA Bid-Ask Back-Tester®.

The company was born out of a personal need for much better trading tools to trade the capital markets (especially futures) and be able to produce profits each and every trade day.

WE WANT THE WORLD'S BEST BID ASK ANALYSIS PLATFORM ON OUR HANDS!

Since we didn't find one – we decided to build one.

In our vision was the fastest, most accurate, easy to read, and STABLE Bid-Ask analysis platform in the world.

We've invested our time and funds to build RICXA® with this vision in mind, and after 18 strict months we had a skeleton prototype ready.

Once that was achieved, the next step was: To teach it!
We've managed to Transformed years on true proven personal trading knowledge and experience Into **Artificial Intelligence**.

But that wasn't enough. We wanted our Bid Ask analysis software to work like our minds. we wanted it to know what we know, react like we do – only better and faster, translating every algorithm into visible signs and signals located on the chart itself – on real-time, while trading.

THAT GOAL WAS ACHIEVED TAKING THE FORM OF RICXA® FEATURE THE RICXA - Cubes®

RICXA-Cubes® are design to detect a change of direction in the short term or long term for Index Futures, Commodities Futures, FOREX and other financial instruments.

We used different algorithms, including market depth calculations, for each instrument RICXA® supports.

The highly complex algorithms used by RICXA® are executed on our main servers performed using Supercomputer processing power while allowing your

© 2012 Ricxa Trading Software Development LTD. All rights reserved.



www.Ricxa.com / Sales@Ricxa.com



personal station to stay relief without consuming precious machine calculation ability, which in most cases isn't even enough for what RICXA[®] requires.

RICXA[®] allows all its users to enjoy a top of the line, real time, high standard rough machine power as far as its own calculation results. This ability is unreachable for most retail traders.

Our machines calculate real time trades at BID, trades at ASK, trades below BID, trades above ASK, INSIDE trades and ten levels of market depth for each side.

These calculation results are immediately driven to your station application, designated to be displayed on your own personal chart.

This is achieved while data from the market flows fluently and uninterrupted to our servers, using the highest quality connections possible, thus enabling RICXA[®] to keep all its users' station-App's updated, reconciling lost or corrupted data from user own market quote, during critical market movements.

RICXA[®] is continuously evolving, developing, learning and upgrading, as we realize the markets are forever changing and no trading strategy is bound to work until the end of time.

Our basic assumption is there is no such thing as a perfect indicator, only the pursuit of one.

By subscribing to RICXA[®] you truly enjoy a top of the line product designed and build with one clear goal, to be the best and most efficient market beating tool ever made.

We invite you to feel, try and learn more about the benefits you gain by trading with an institutional level Bid-Ask analysis platform at your fingertips.

WWW.FOREX-WAREZ.COM
ANDREYBBRV@GMAIL.COM SKYPE: ANDREYBBRV

Version Comparison

Ricxa Flow®	Full Version	Free Version
Basic Bid-Ask Analysis Chart		
Basic Candle Stick Chart		
Regular Reversal Bar Type		
Pull Back Bar		
Connection To Ricxa Algorithm Servers		
Connecting To Multiple Ricxa Servers (U.S. & Europe)		
Ricxa Cubes®		
Ricxa Cubes® Optimized Algorithms For: ES, DAX, NQ, TF, 6E, CL, Z, YM.		
Ricxa Cubes® General Algorithm For All Financial Instruments		
Magic Bars®		
Magic Bars® Optimized Algorithms For ES.		
Auto Repair Data Through Ricxa Servers		
Constant Improvement of Algorithms		
Real-Time Algorithm Tuning Depending on Current Market Behavior		
Ricxa Flow Chart Algo Statistics®		
Mini Ricxa Flow®		
Painting Algorithms		
Multiple Controls (Bar POC)		
True Reversal Bar Type		
Download History (History Player)		
Ricxa Flow Design Features		
Ricxa Flow Filter by Size		
Custom Layouts		
Support for All Instruments		
Alerts		
Ricxa Trades		

WWW.FOREX-WAREZ.COM
ANDREYBBRV@GMAIL.COM SKYPE: ANDREYBBRV



System Requirements

The following lists the hardware requirements for Ricxa Flow software:

Recommended:

OS: Microsoft Windows 7.
Processor: 2.4 GHz or higher.
Memory: 4 GB of RAM
Hard-Drive: 120 MB available disk space.
Frameworks: Microsoft .NET 4.0 Framework, Microsoft SQL Server Compact 4.0.
Third Party DF: DTN IQ FEED.

Minimum:

OS: Microsoft Windows Vista or higher.
Processor: 1.4 GHz or higher.
Memory: 1.28 GB of RAM
Hard-Drive: 120 MB available disk space.
Frameworks: Microsoft .NET 4.5 Framework, Microsoft SQL Compact 4.0.
Third Party DF: DTN IQ FEED.

WWW.FOREX-WAREZ.COM
ANDREYBBRV@GMAIL.COM SKYPE: ANDREYBBRV



Windows 8

Compatible

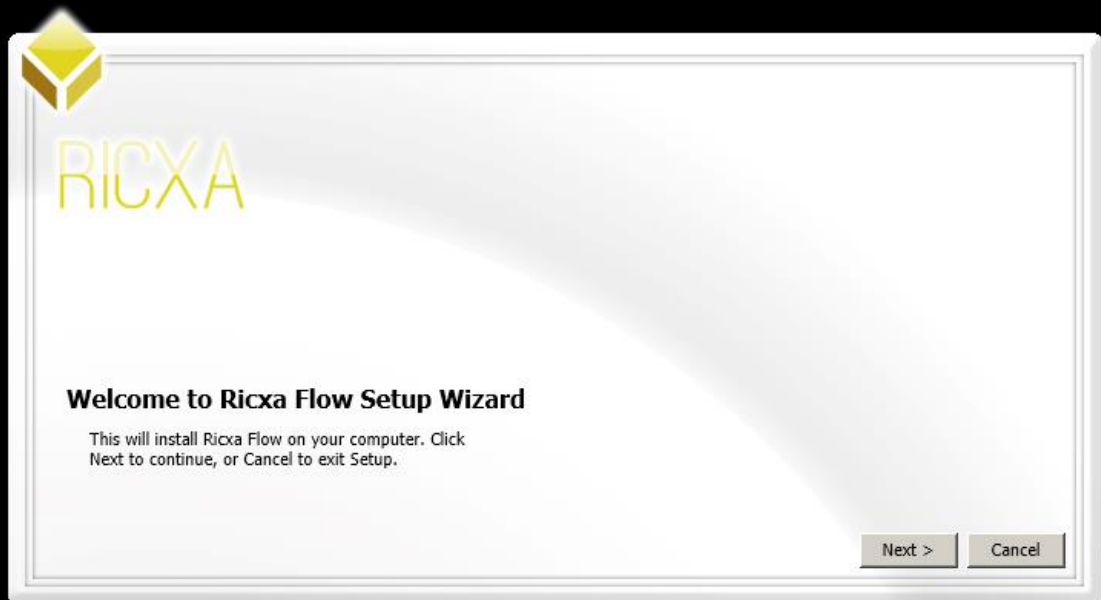


Installation

1. Download Ricxa Flow from: www.Ricxa.com.
2. Open RicxaSetup.exe.
If you have not installed on your computer Microsoft .NET and Microsoft SQL compact, installer will ask you to access the Microsoft web site to download them and install them.
3. Installation downloading necessary data:



4. Click "Next >".



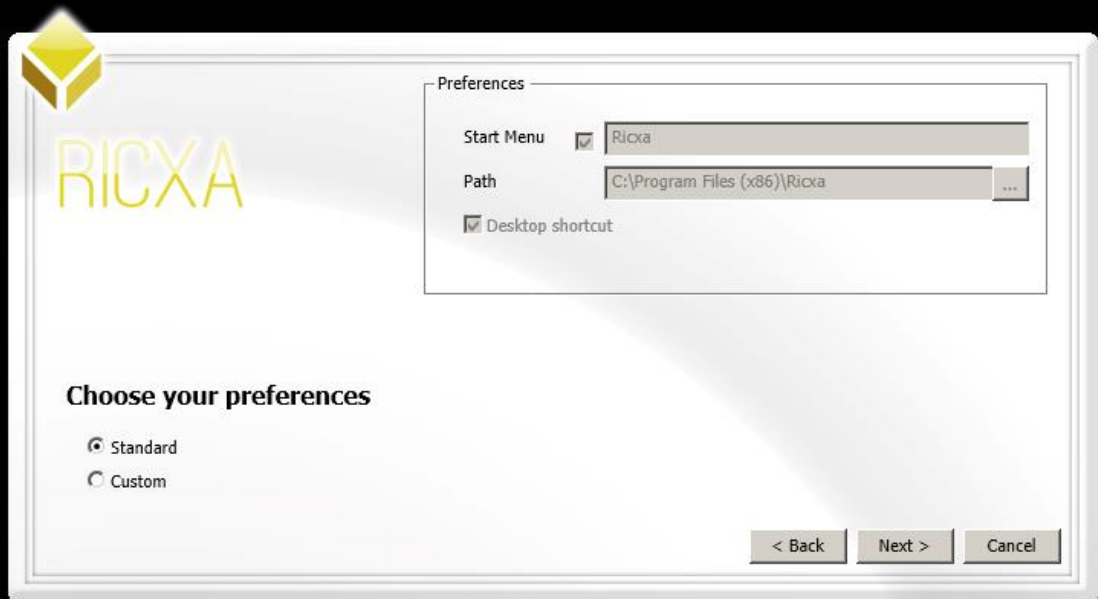
WWW.FOREX-WAREZ.COM
ANDREYBBRV@GMAIL.COM SKYPE: ANDREYBBRV

© 2012 Ricxa Trading Software Development LTD. All rights reserved.

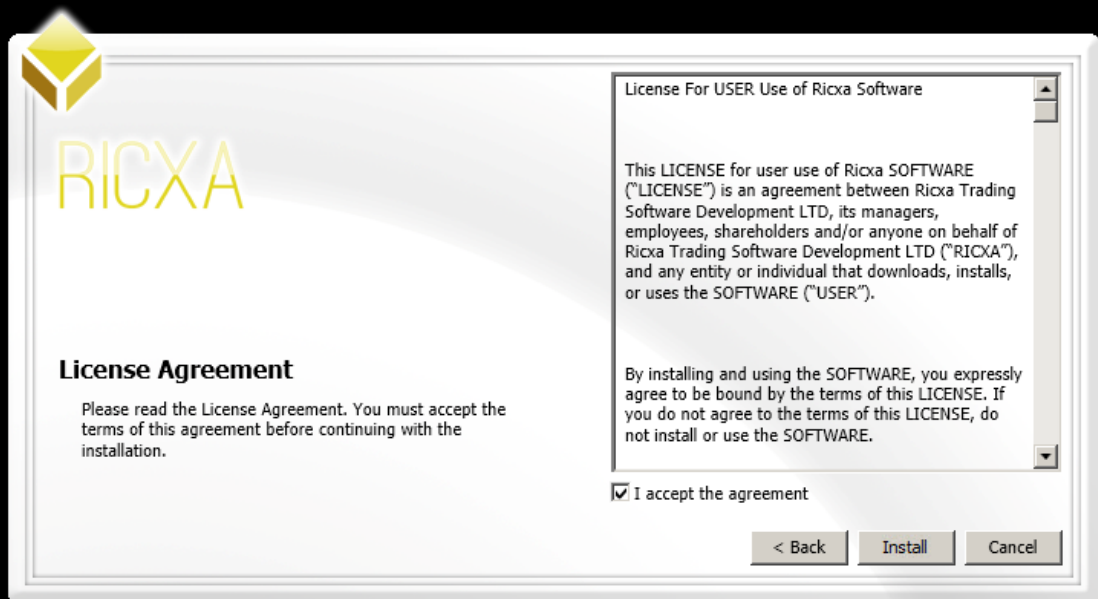


www.Ricxa.com / Sales@Ricxa.com

5. To continue, click "Next >", if you would like to select a different folder, click "Custom".



6. You must read the license for user use of Ricxa software, then if you accept the agreement, click "I accept the agreement" and click "Install >".

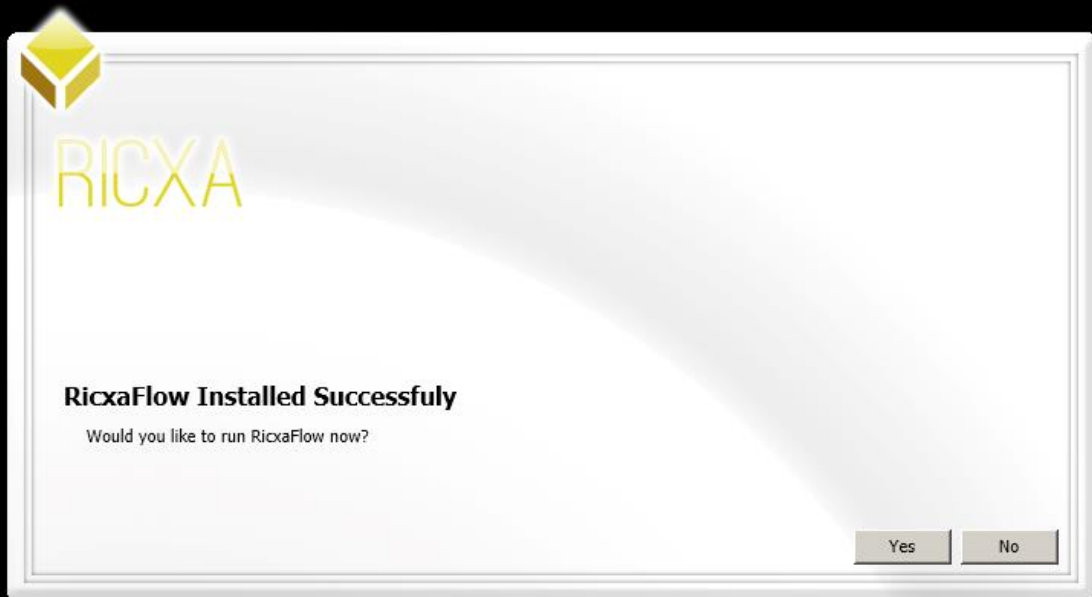




7. Wait until the software download from our servers.



8. You are done.



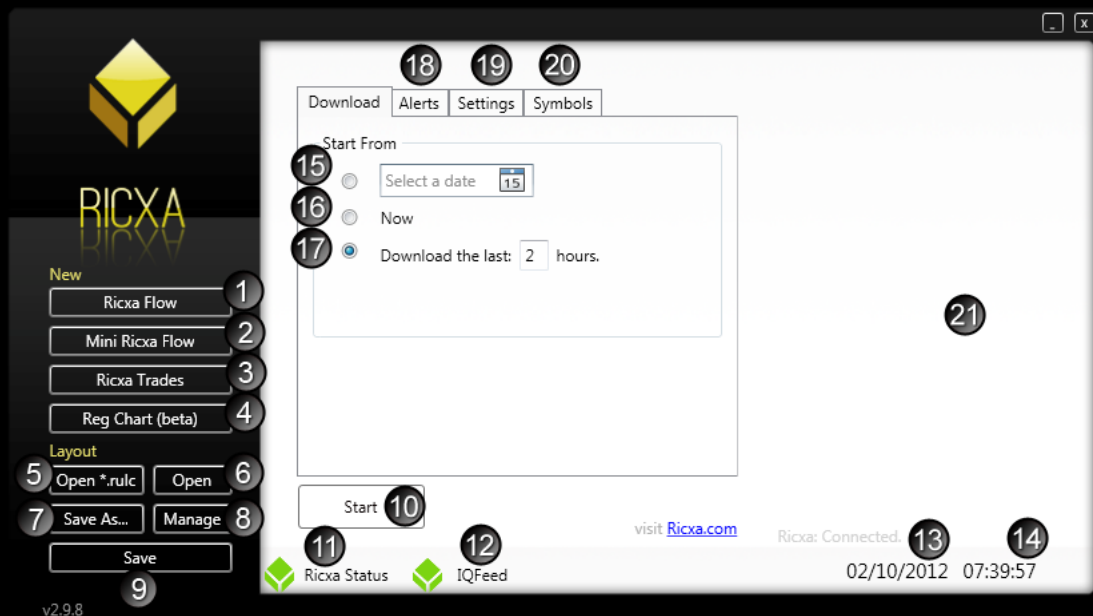


User Interface

Welcome to the program's initial window, here you put your personal login information you received from us when you registered.



Let's begin, below the main window of Ricxa Flow 2.9.8:



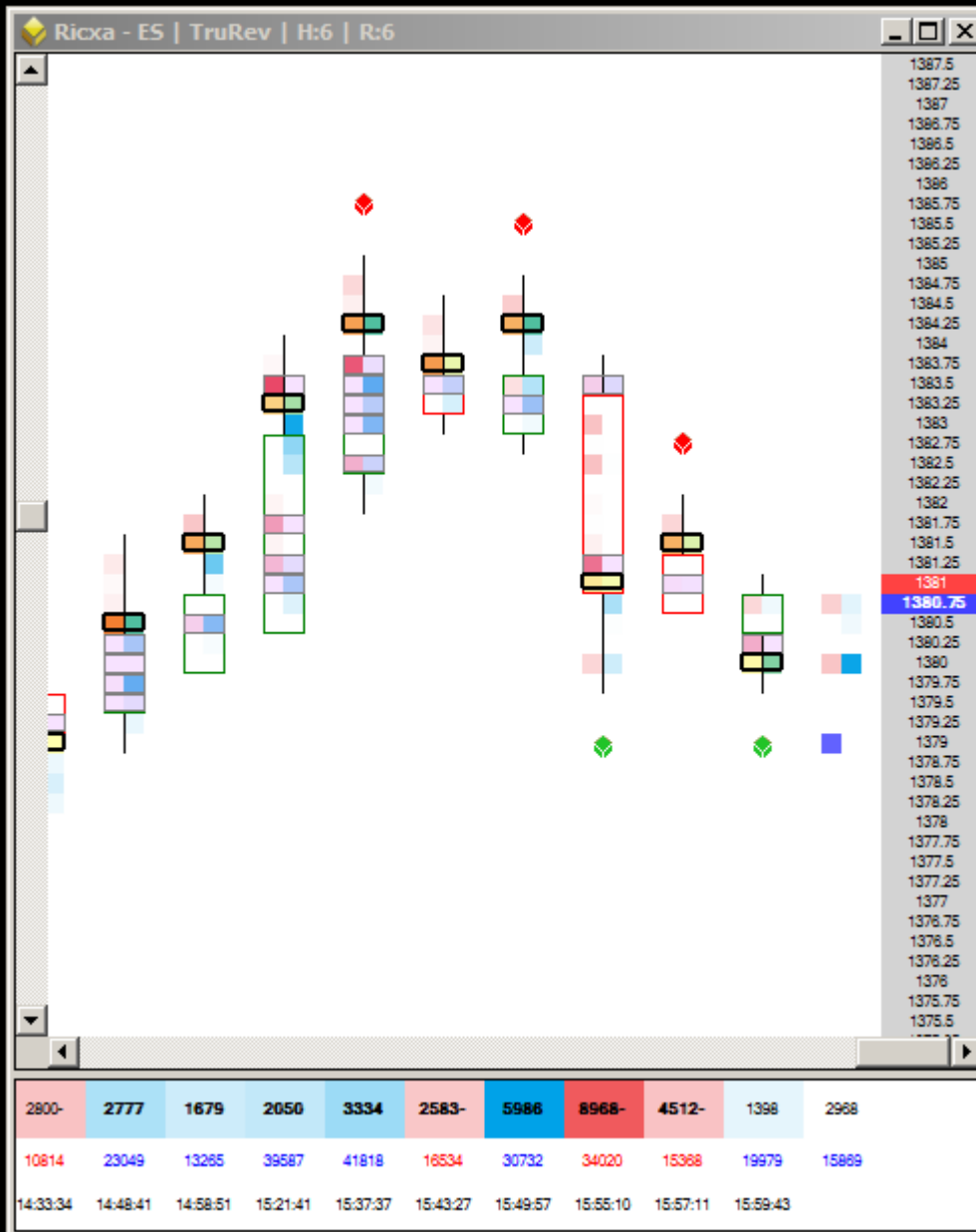
1. Open the software's legendary RicxaFlow chart that allows you to see any financial instrument with full transparency.
2. Mini Ricxa Flow is a small version of Ricxa Flow (No numbers) that allows to see the market from **Bird's-eye view**, this graph will remind you of the

© 2012 Ricxa Trading Software Development LTD. All rights reserved.



www.Ricxa.com / Sales@Ricxa.com

old candle stick, only much more effective with the software algorithms and control levels in each bar.



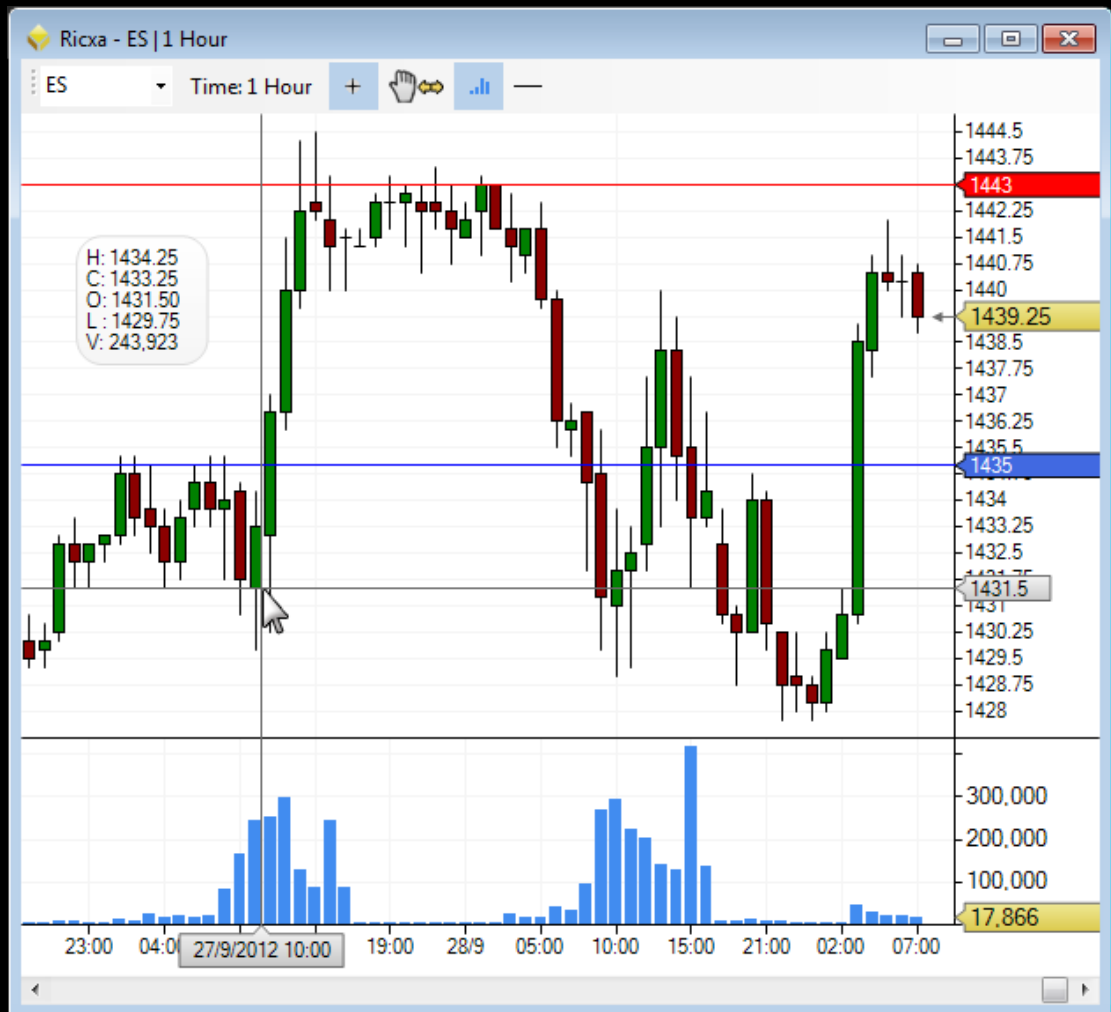
WWW.FOREX-WAREZ.COM
ANDREYBBRV@GMAIL.COM SKYPE: ANDREYBBRV

- Ricxa Trades shows the price that each trade occurs at, whether the trade occurred at the Bid or the Ask, the amount of volume and the exact time.

Kind	CummVol	Price	Vol	Time
s	1236	1380.75	88	PM 3:59:43
s	1148	1380.75	86	PM 3:59:43
s	1062	1380.75	100	PM 3:59:43
s	962	1380.75	107	PM 3:59:43
s	855	1380.75	168	PM 3:59:43
s	687	1380.75	93	PM 3:59:43
s	594	1380.75	100	PM 3:59:41
s	494	1380.75	109	PM 3:59:38
s	385	1380.75	185	PM 3:59:38
s	200	1380.75	200	PM 3:59:34
b	100	1381	100	PM 3:59:34
b	100	1380.75	100	PM 3:59:33
b	288	1380.5	288	PM 3:59:31
s	86	1380	86	PM 3:59:28
b	1460	1380	95	PM 3:59:26
b	1365	1380	200	PM 3:59:26
b	1165	1380	86	PM 3:59:26
b	1079	1380	88	PM 3:59:26

3893

- "RegChart" = Regular Chart, is a classic Japanese Candlestick chart. *The company's developers are still working on it, so it was released in beta version.*



- Open layouts from older version of Ricxa Flow. Use this if you have old file that belongs to an older version of the software, after you open it the layout is automatically maintained within "Manage" so the next time you open this layout, use the layouts management interface.
- A quick way to open layouts that you have saved in advance within the layouts management interface.
- Save as a new layout into the layouts management interface.
- Open the layouts management interface where you can save, save as, open or delete your layouts.
- Save changes to the layout you currently using.
- Start playing real time or historical data on your charts & tools.

11. Your connection status to RICXA algorithm servers.

Disconnected



Poor Connection



Connected

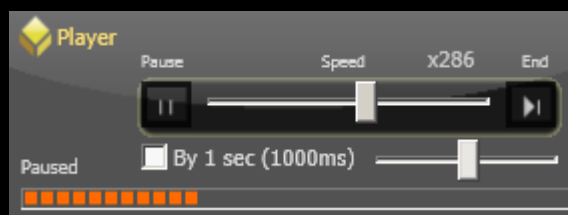


12. Your connection status to third party data feed provider.

13. Date from exchange.

14. Time from exchange.

15. Select a date to start playing history to the present.



16. Now data only - no history.

17. Choose to play data a few hours back from the current time.

18. Choose alerts sounds for your Ricxa Flow & Ricxa Trades tools.

19. General setting (Will be updated in subsequent releases).

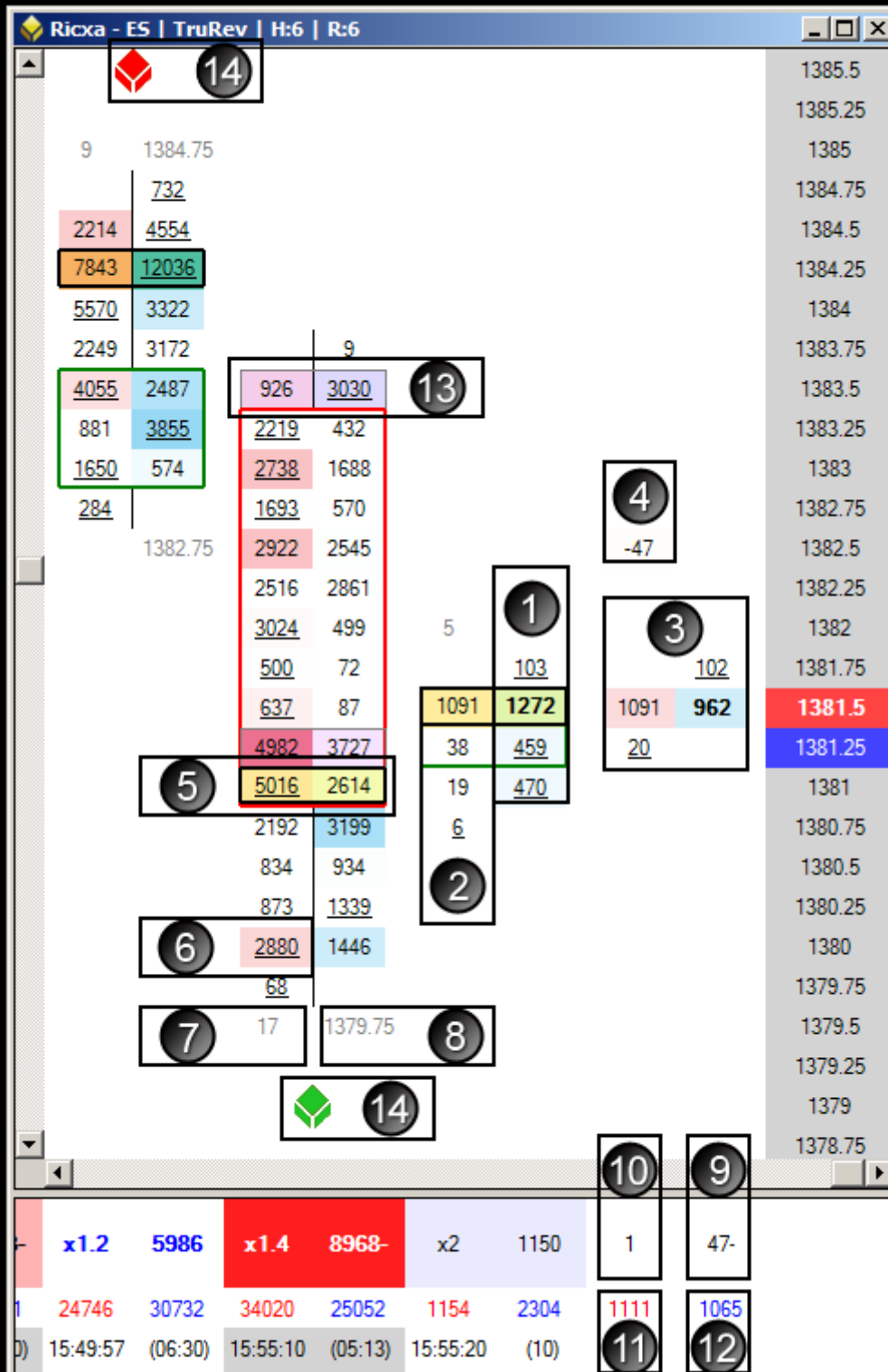
20. The symbols manager allows you to edit, add, delete and find Symbol of a financial instrument.

21. This area is a log for the various system messages of the software, you may be asked to use it while getting help from our support team.

WWW.FOREX-WAREZ.COM
ANDREYBBRV@GMAIL.COM SKYPE: ANDREYBBRV

Ricxa Flow Chart

The Ricxa Flow chart is what we believe the most powerful tool for day trading in general - especially futures contracts.



In this part we will go over some of its features and learn what the numbers and the other symbols on Ricxa Flow tells us.

(Notice the numbered circles in the picture above).

1. The numbers on the right side of the bar is the number of contracts that traded at ASK.
 - a. For example, if you see the number 100 it can be:
1 trade of 100 contracts/BUY/MARKET
Or
100 trades of 1 contract/BUY/MARKET
That traded into market depth that sits on the ASK side.
2. The numbers on the left side of the bar is the number of contracts that traded at BID.
 - a. For example, if you see the number 100 it can be:
1 trade of 100 contracts/SELL/MARKET
Or
100 trades of 1 contract/SELL/MARKET
That traded into market depth that sits on the BID side.
3. This is the "Pull-Back" bar, it is working as "Appendix" to the current bar, displayed to the right of the last bar on your Ricxa Flow charts and resets itself every time the last bar makes new high or low.
4. The " Δ / Delta" for the "Pull-Back" bar.
5. The "Control" or "POC - Point of Control" of each bar.
In other words, the highest traded volume on each bar.
6. The "Underline" indicates significantly large amount in relation to the amount next to it (horizontally).
For example, at in the picture above you see 2880 compared to 1446 which is a much smaller amount, so the underline is in 2880.
7. The "Tick" size of the bar.
8. The low/high of the bar.
9. This is the total " Δ / Delta" for each bar.
10. This is the "Ratio" for the bar itself.
11. Summary of all SELL/MARKET at the bar itself.
12. Summary of all BUY/MARKET at the bar itself.
13. Old Level of control at the bar.



14. These "Cubes" come from our algorithm servers.

The "Ricxa Cubes Services" were designed to help us enter scalping trades and sometimes catch an entire trend in the market before anyone sees it on their charts.

The whole idea of the Cubes is to identify and catch a minor or major trend reversals before they actually happens while using a very small stop loss depend on the trader style.

Ricxa Cubes calculates both order flow and trade flow analysis.

We use a different algorithm's including market depth calculations for each instrument our software supports at this time.

For example, many traders would say that RICXA CUBES is a life changing tool to have in their hands while trading the E-MINI S&P 500 futures.

The complex algorithm's comes from our servers helping your computer stays relief with no need to work hard on calculations that require supercomputers.

We normally use workstations with dual six core Xeon processors that are 3.46GHz, 12M L3, 6.4gts/turbo.

Our machines calculate on real time trades at BID, trades at ASK, trades below BID, trades above ASK, INSIDE trades and 10 levels of market depth for each side.

The calculations are not sent to your computer at any given moment but only the result.

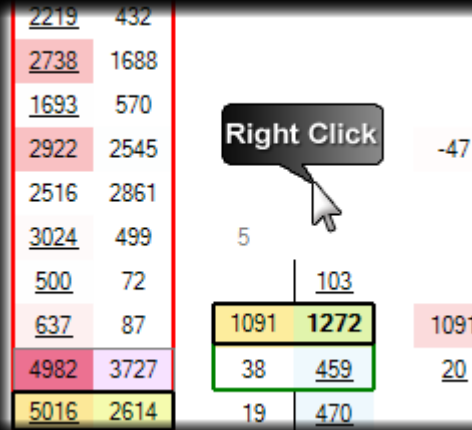
The following is checked by our servers before you see a "Cube" in your RicxaFlow chart:

<u>Order Flow Analysis:</u>	<u>Trade Flow Analysis - Bid Ask:</u>	<u>Other algorithms:</u>
<i>10 Level Market Depth calculations</i>	<i>Institutional Hedge Funds - Time & Sales calculations</i>	<i>Exhaustion Formation 1</i>
<i>2 Level Market Depth calculations</i>	<i>Institutional Hedge Funds behavior</i>	<i>Exhaustion Formation 2</i>
<i>Institutional Hedge Funds behavior analyzer</i>	<i>Algorithmic volume based support & resistance</i>	<i>Exhaustion Formation 3</i>
<i>Institutional Hedge Funds unusual behavior detection</i>	<i>Algorithm 1</i>	
	<i>Algorithm 2</i>	
	<i>Volume exhaustion Algorithm 1</i>	
	<i>Volume exhaustion Algorithm 2</i>	
	<i>Volume exhaustion Algorithm 3</i>	
	<i>Volume exhaustion Algorithm 4</i>	

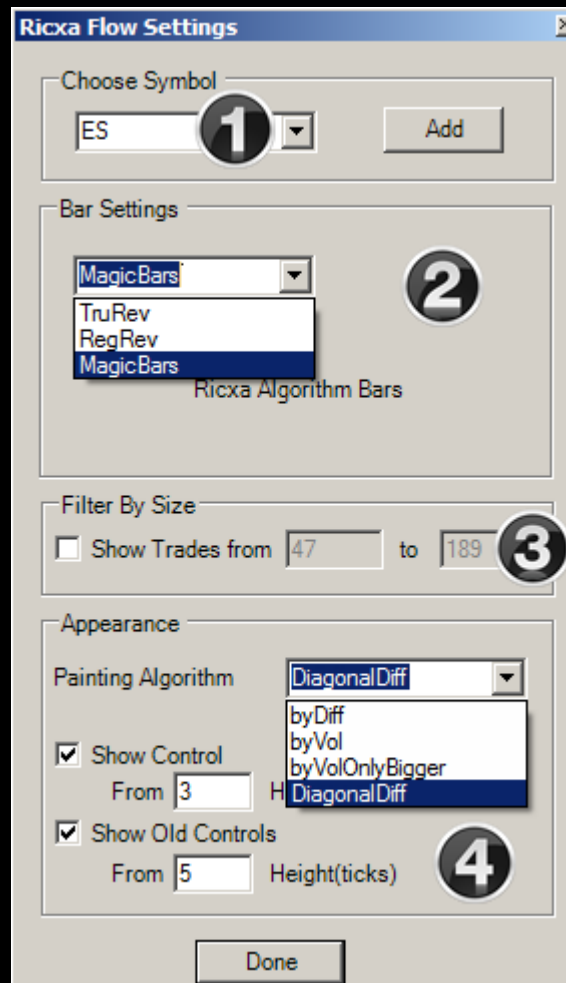


Ricxa Flow Setting

To open "Ricxa Flow Setting" window please right click on your Ricxa Flow chart then choose "Setting":

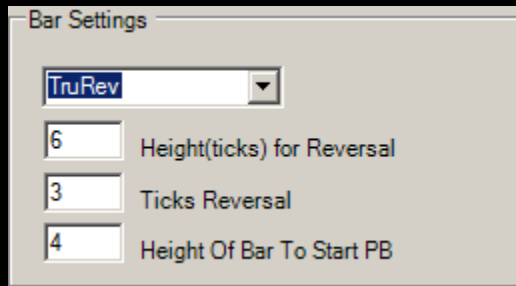


Here are the settings window, in this Manual will talk about what each thing does, for more depth information please contact us at Support@Ricxa.com or contact qualified RICXA partner.



1. Select the symbol that you want to display on the chart, if the symbol is not listed you may click the add button.
2. Here you can choose the interval for your Ricxa Flow chart.

"TruRev" = True Reversal:

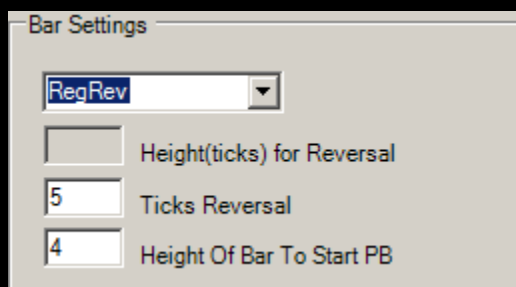


"Height (ticks) for Reversal" means the bar size to start looking for a change of direction "Ticks Reversal".

For example, in the image above it will be:
If bar size is 6 ticks or more then look for 3 ticks of Reversal in order to open a new bar.



"RegRev" = Regular Reversal:



"Ticks Reversal" means the number of ticks to start looking for a change [based on the direction of the previous bar.](#)

Unlike "TruRev", on "RegRev" each bar depends on the previous bar.

Here are two possibilities that can occur:

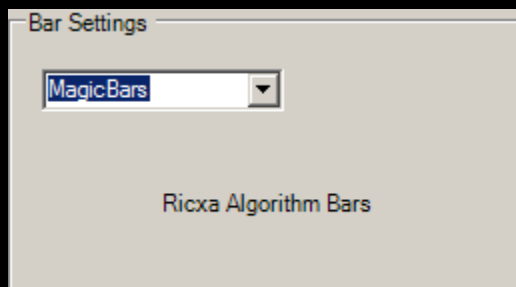
If the previous bar went **down**, a change of direction can be considered as a change only if the market is going **up**.

The opposite for that is:

If the previous bar went **up**, a change of direction can be considered as a change only if the market is going **down**.



"MagicBars®" = Ricxa Algorithm Bars:



The Magic in "Ricxa Algorithm Bars" which we called "Ricxa's Magic Bars®" exist in every bar that opens during the trading day.

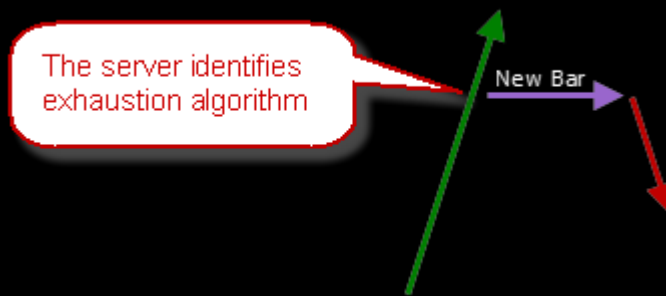
The idea behind the scenes is that in any bar that opens we may see a change of direction in the market.

This is one of the most powerful tools for short-term trading.

We at RICXA use MagicBars® mainly to enter & manage our trades.

Magic Bars is helping us take a profit or partial profit when it's opening a new bar.

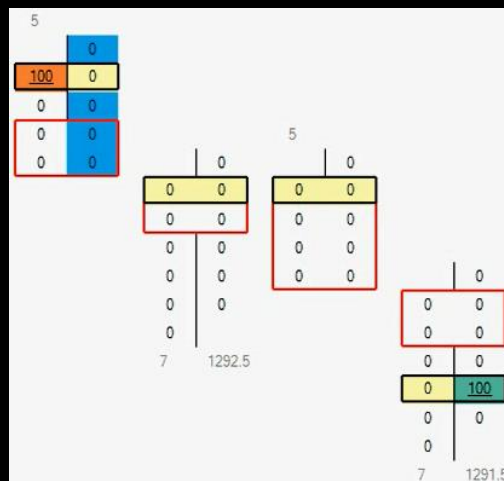
We encourage you to try for yourself the magic in Ricxa's Magic Bars®. The next picture shows that our servers are identifying exhaustion and weakening of the buyers on the market while at the same time exhaustion reliability detection test is searching for approval in our main server - then a new bar opens.



Note that this algorithm is very effective and works even better in combination with our "Cubes".

You should follow the market reaction with your preferred financial instruments so you can build your unique way of trading with this tool.

3. You can choose to filter the number of futures contracts / shares on the chart itself.



4. The "Painting Algorithm" multiple choices will affect the way your Ricxa Flow chart highlights the differences in color to help you trade and identify the formations of the Bid-Ask you want to see while trading.

byDiff
Smart painting by
difference
(horizontally)

byVol
Smart painting by
Volume (horizontally)

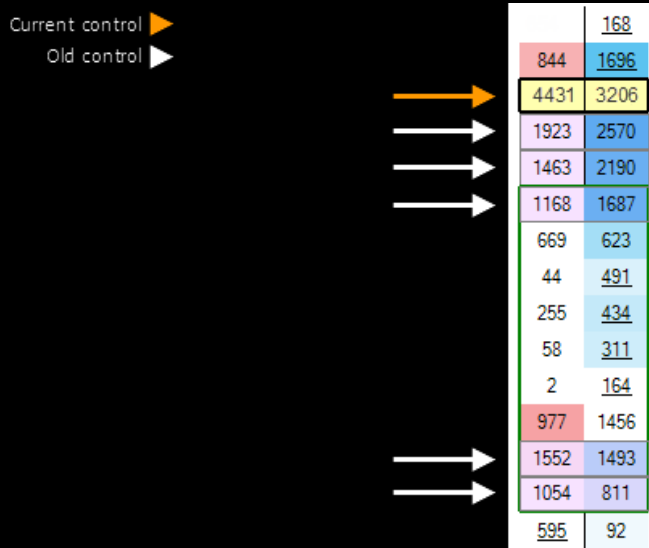
byVolOnlyBigger
Smart painting by only
the bigger Volume
(horizontally)

DiagonalDiff
Smart painting by
difference (diagonal)

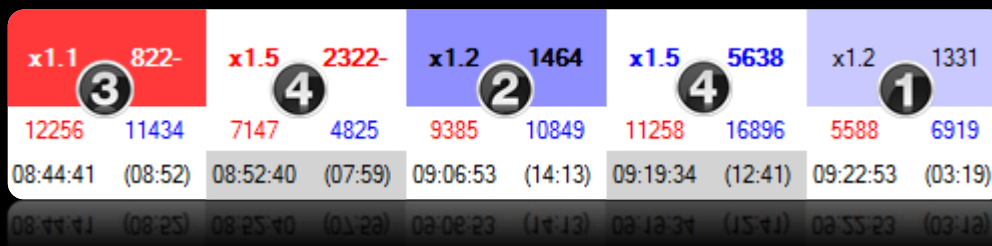
Every calculation is taking into account the general behavior of the market and varies according to that.

"Show Control" - Select the size of the candle from which the control will be shown on each bar on your Ricxa Flow chart.

"Show Old Control" - Select the size of the candle from which your Ricxa Flow chart remember the old controls on each bar.



In this section we will go over the meaning of colors in the rows totals at the bottom of the Ricxa Flow chart.



1. Black # on color - Unusually weak.
2. Black **bold** # on color - Slightly stronger than usual.
3. White **bold** # on color - Approaches to be extreme than usual.
4. **bold** colored # on white background - Unusually extreme situation.

Every calculation is taking into account the general behavior of the market and varies according to that.

WWW.FOREX-WAREZ.COM
ANDREYBBRV@GMAIL.COM SKYPE: ANDREYBBRV

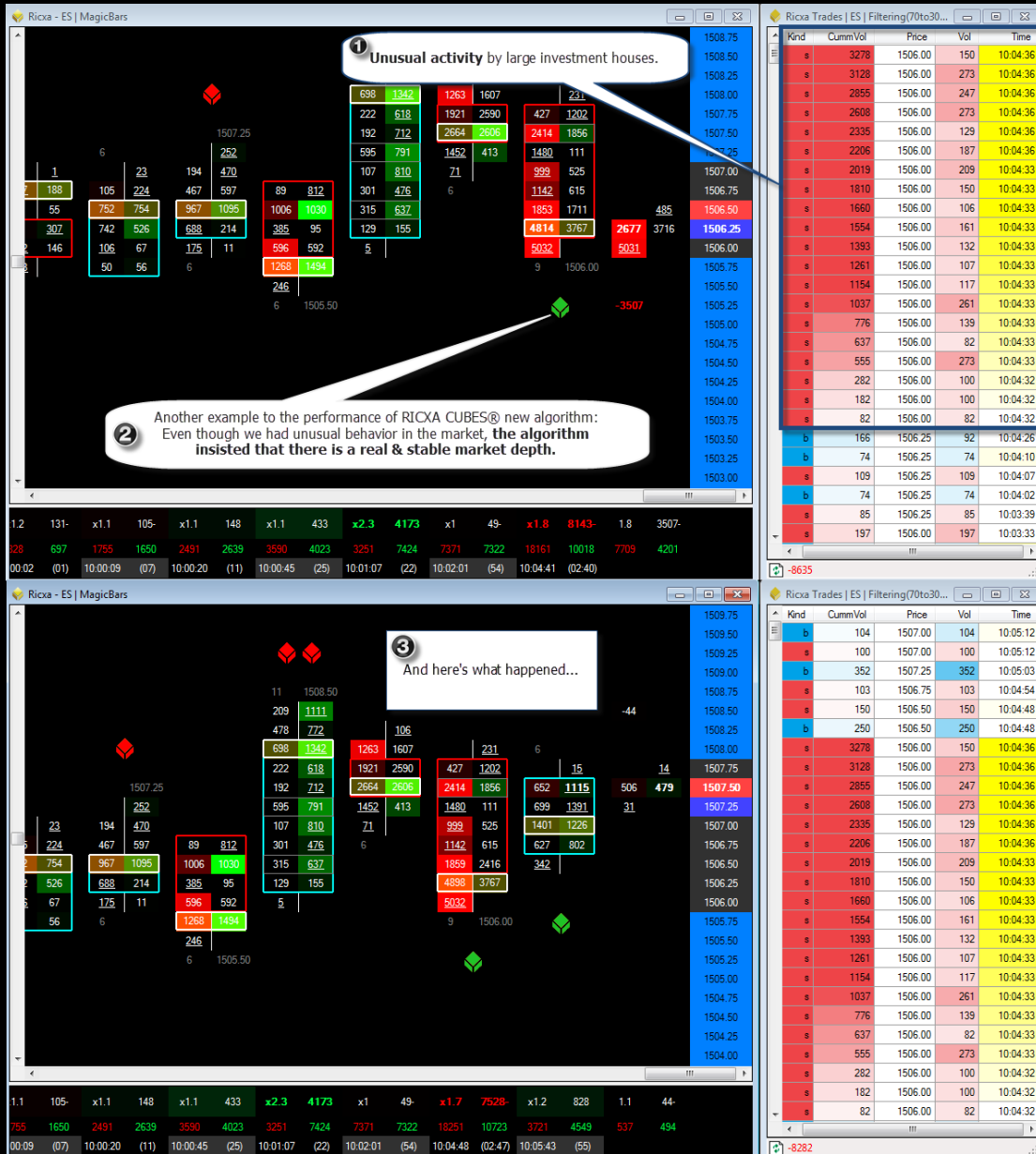
Random Images (From Our Facebook Page):

2 The new algorithm follows an **unusual activity** designed by large investment houses especially to confuse robots, automated trading systems, and other strategies. This helps us to identify unreliable levels so our algo will not fall into their trap.

1 The new algorithm for the Ricxa CUBES® (Version 2.9.9.1). Although there's a market depth - the CUBES® did not show up.

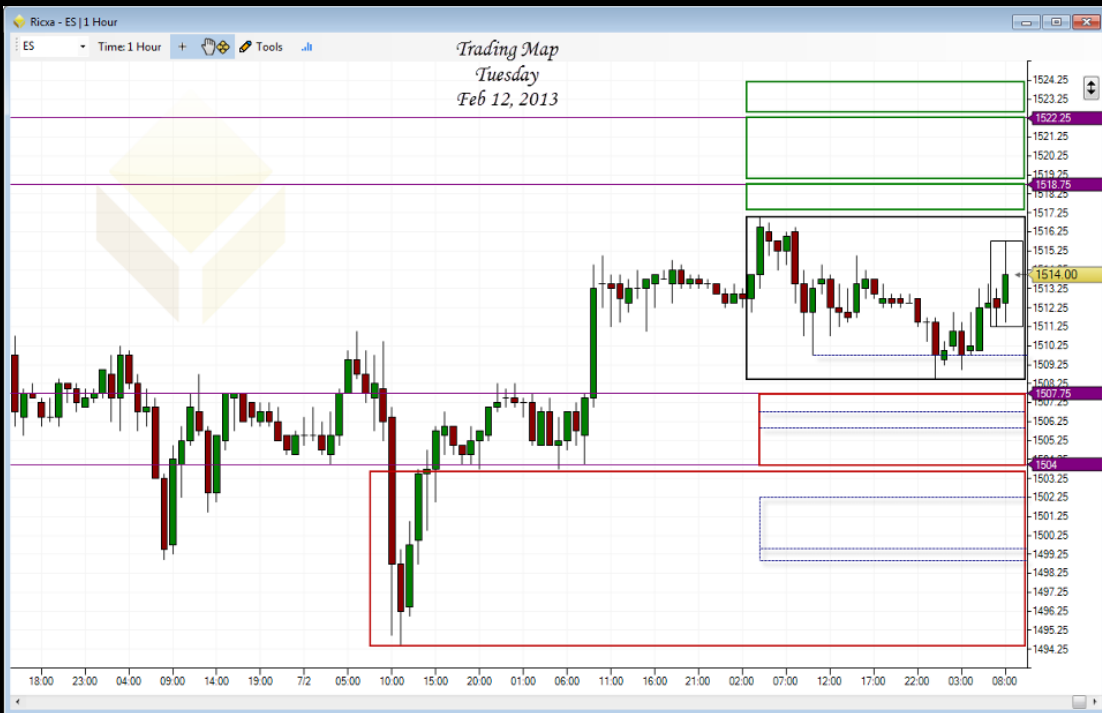
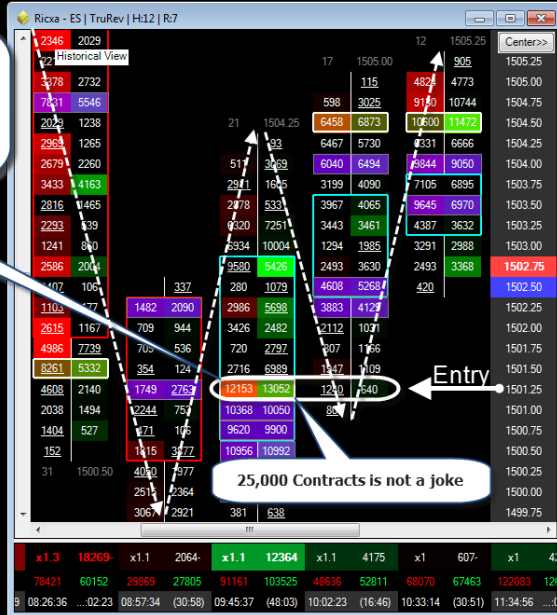
3 And here's what happened...

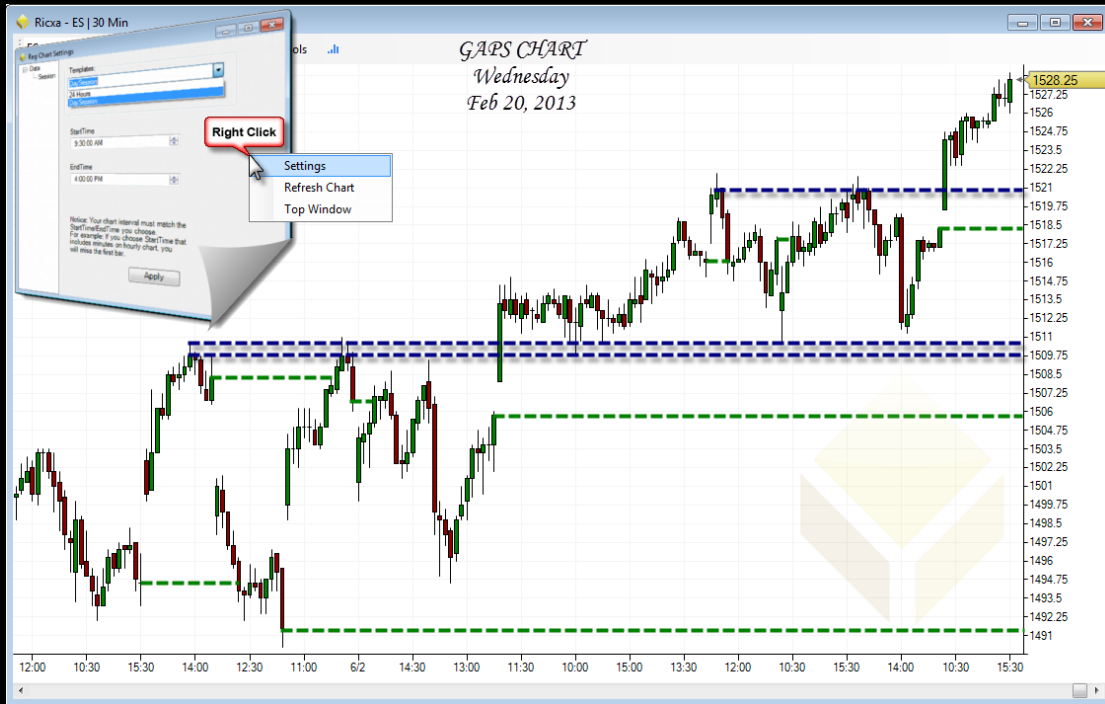
The screenshot displays the Ricxa trading software interface. The main window shows a MagicBars chart with various price levels and volumes. The right-hand side shows a Trades window with columns for Kind, Cumulative Volume, Price, Volume, and Time. Callouts 1, 2, and 3 highlight specific market activity and algorithmic behavior.





Okay, so you see support on your candle stick chart.
 Where to enter this trade?
 Exactly on the support line?
 A little before?
 A little after? (i.e Let the market take some stop loss orders)
 What can you do? And how much risk to this trade?
One RicxaFlow chart answer to all these questions!





Symbol Finder

Symbol Description

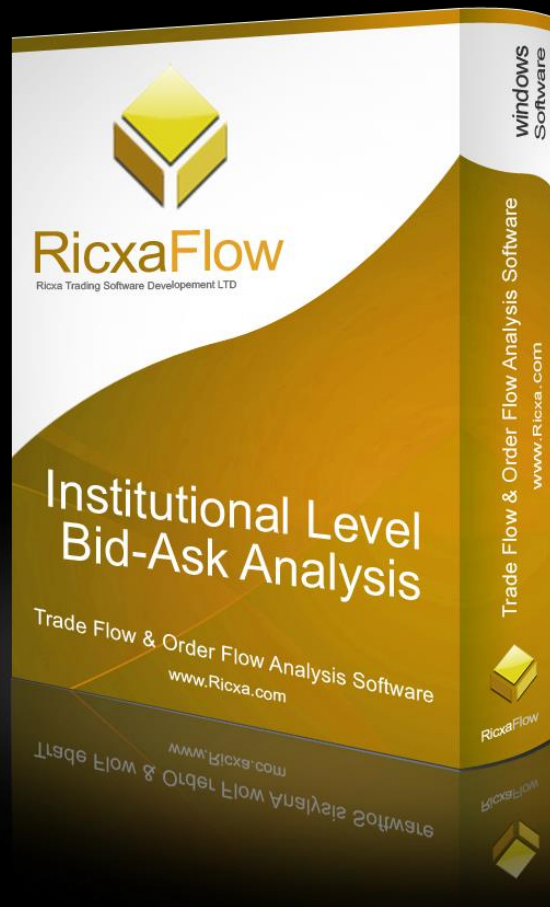
ES

Symbol	Description	Exchange
ESUZ12	EURO STOXX UTILITIES DECEMBER 2012	EUREX
ESV#	EURO STOXX TRAVEL & LEISURE SEPTEMB...	EUREX
ESVH13	EURO STOXX TRAVEL & LEISURE MARCH 2013	EUREX
ESVU12	EURO STOXX TRAVEL & LEISURE SEPTEMB...	EUREX
ESVZ12	EURO STOXX TRAVEL & LEISURE DECEMBE...	EUREX
ESZ#	EURO STOXX PERSONAL & HOUSEHOLD GO...	EUREX
ESZH13	EURO STOXX PERSONAL & HOUSEHOLD GO...	EUREX
ESZU12	EURO STOXX PERSONAL & HOUSEHOLD GO...	EUREX
ESZZ12	EURO STOXX PERSONAL & HOUSEHOLD GO...	EUREX
@ES#	E-MINI S&P 500 SEPTEMBER 2012	CMEMINI
@ESH13	E-MINI S&P 500 MARCH 2013	CMEMINI
@ESK#	EURO FX/SWEDISH KRONA SEPTEMBER 2012	CME_GBX
@ESKH13	EURO FX/SWEDISH KRONA MARCH 2013	CME_GBX
@ESKM13	EURO FX/SWEDISH KRONA JUNE 2013	CME_GBX
@ESKU12	EURO FX/SWEDISH KRONA SEPTEMBER 2012	CME_GBX
@ESKU13	EURO FX/SWEDISH KRONA SEPTEMBER 2013	CME_GBX

Cancel OK



[Click Here To Purchase RicxaFlow](#)



FEEL FREE TO CONTACT US:

Sales@Ricxa.com

Support@Ricxa.com

United States: +1 (312) 235 2359

www.RICXA.com

www.Facebook.com/RicxaLTD

www.YouTube.com/RicxaLTD

NOTHING CONTAINED IN THIS MANUAL SHALL BE CONSTRUED AS A RECOMMENDATION TO BUY OR SELL COMMODITY FUTURES, OPTIONS, STOCKS, FOREX, OR ANY OTHER FINANCIAL INSTRUMENT.

WWW.FOREX-WAREZ.COM

ANDREYBBRV@GMAIL.COM SKYPE: ANDREYBBRV

© 2012 Ricxa Trading Software Development LTD. All rights reserved.



www.Ricxa.com / Sales@Ricxa.com