

WWW.TRADING-SOFTWARE-COLLECTION.COM

ANDREYBBRV@GMAIL.COM

SKYPE: ANDREYBBRV



Rampage Trading Manual V7

<http://www.rampagetrading.com>

E-mail: info@rampagetrading.com

WWW.TRADING-SOFTWARE-CATALOG.COM

Copyright © 2006-2013 Rampage Trading, All rights reserved

WWW.TRADING-SOFTWARE-COLLECTION.COM

ANDREYBBRV@GMAIL.COM

SKYPE: ANDREYBBRV

Table of Contents

Introduction.....	3
Chart Analysis.....	5
Disclaimer.....	9
Trading Rules.....	13
Multiple Trend/Time Frame Analysis.....	24
RVOL (Rampage Volume).....	35
Trading Alerts.....	40
RS (Rampage Scalper).....	43
Trading Money Management.....	57
Frequently Asked Questions.....	64
NinjaTrader.....	68
Account Connections.....	69
Software Installation.....	75

Welcome to Rampage Trading and congratulations on your commitment to what we believe is one of the best trading tools you will ever use. We at Rampage Trading could go on and on about our 25 plus years of Wall Street experience, top-tier MBA educations, close relationships with Wall Street's leading research analysts, Institutional traders, financial media and top fund managers. But why? We let the charts speak for themselves because we know what works.

Rampage Trading utilizes cutting-edge technology by combining quantitative analysis, predictive analytics and other proprietary statistically backed formulas employed by top traders and fund managers to bring you the next generation of trading software.

Over the last decade, our team began extensive research into the area of algorithmic/automated trading with the goal of taking a successful discretionary trading strategy and making it as autonomous as possible. With the help of some of the brightest minds on Wall Street and armed with knowledge of statistically based behavioral research, the Rampage Trading team was able to develop multi-tiered algorithms that identify significant pre-conditions in price action for preeminent stock moves. This program, based on aggregate algorithms, in combination with typical triggers for entry, risk management concepts and proper exit techniques, surpassed expectations and lead to the development of Rampage Trading.

Rampage Trading's proprietary software algorithms deliver real-time Buy and Sell signals on time-tested winning strategies. The software works on all markets, including Stocks, Futures, ETF's, Commodities, Forex, Bonds or any other freely traded markets. Rampage Trading is universal, and works with any time frame including day trading, swing trading and position trading.

Rampage Trading targets clean, easy to see price reversal points at support and resistance levels carved out by the markets price action. Rampage Trading assists the trader in identifying trading opportunities by very clearly and graphically displaying color changes that correspond with changes in price, volume and trend. **Blue** is bullish (more buyers than sellers), **Gold** is neutral (price consolidation) and **Red** is bearish (more sellers than buyers). The price bars or candlesticks change colors to reflect these conditions. In an uptrend, there are more buyers than sellers and the price bars or candlesticks turn **Blue**. We Buy on **Blue** price bars or candlesticks. **Gold** price bars or candlesticks represent market indecision or price consolidation and no action is to be taken. In a downtrend, there are more sellers than buyers and the price bars or candlesticks turn **Red**. We Sell (Short) on **Red** price bars or candlesticks. Our software will show you precisely where the balance of buyers and sellers begins to shift and a change of direction becomes imminent.

You may also confirm each Buy or Sell (Short) signal with our proprietary trend algorithms represented by Blue or Red colored dots above or below price. A Blue dot below price represents a confirmed uptrend. A Red dot above price represents a confirmed downtrend. If the last trend algorithm is Blue in color and you receive a Buy signal, you may take the long trade. If the last trend algorithm is Red in color and you receive a Sell (Short) signal, you may take the Sell (Short) trade. You may take the trade based solely on the Buy or Sell (Short) signal you receive without using the trend algorithms. However, we recommend the Buy or Sell (Short) signal be in agreement with the last trend algorithm colored dot (Blue is bullish while Red is bearish).

Values of our proprietary trend algorithms (Blue or Red colored dots above or below price) represent key support/resistance areas and are used as protection stops if the market turns against our position.

How Does Rampage Trading Work?

- Pick a stock, future, forex or any liquid market that you'd like to trade. Type in the symbol.
- Choose your time horizon: Daily, weekly, monthly, minute, tick, range, etc. Whenever you see a Buy or Sell signal, you decide whether or not you want to enter the trade.
- Can it really be this simple? Absolutely!
- Of course, there are a few finer points you'll need to learn along the way, but this is the simplicity of our software.

This manual will provide you with very simple yet highly profitable probability rules and trading examples. We recommend you clear your trading mindset and study the rules and charts and become familiar with our software. Rampage Trading can help you put money management and risk perspective into your trades. Let this become your system, because without a system and rules, you are guessing. Markets consistently react to news, fear/greed and support and resistance. The Rampage Trading logic is based solely on price and does not contain any biases or theories, but instead employs proven complex mathematical and statistical algorithms. The nature of these algorithms will flow with the trend and direction of the market. Our software is highly efficient at getting into any move near the preceding high or low of the market turn. Rampage Trading overlays on your NinjaTrader chart to let you see the direction of the market in a clean uncomplicated manner.

Rampage Trading was designed for the novice to the experienced trader. The less experienced traders will have a visually pleasing color coded depiction of market action, while the experienced trader will make use of more complex patterns, divergences and the like. Rampage Trading will **NEVER** miss a major move or move of consequence. Our software will give highly accurate signals on any market and any time frame.

Rampage Trading works in any time frame as well: Daily charts, weekly charts, monthly charts, minute charts, tick charts or range charts.

Day Trading Charts

Many traders will ask the question, "What is the best time frame for day trading?" Let's examine the pros and cons of a higher time frame and a lower time frame.

A lower (faster) time frame will give you more trading opportunities. Your risk will be smaller since the range of each bar is relatively small. You will not feel bored because the setups will occur quickly one after another. The risk is, of course, with more signals, you might be over trading. The chart might be noisy, and you might get a few false moves along the way. Because the chart moves faster, you are also forced to make quick decisions and won't have much time to think before pulling the trigger.

A higher (slower) time frame offers less trading setups, along with less false signals. The range of each bar will be relatively larger and so is your risk. When the market is relatively quiet, you may not be able to find an optimal entry signal, which is not necessarily a bad thing, but you do need to have the discipline to sit on your hands when this occurs. Because it takes more time to form a bar, it grants you more time to make trading decisions.

What time frame should you be trading with? We really can't tell you that. Only you can answer that question for yourself. Each person is different. What works for someone else might not work for you. The most important thing is to find a time frame that fits YOUR personality, trading style and risk tolerance. It's important that you feel comfortable with the time frame of your choice.

Day trading charts can be based upon several different criteria, with the most popular being time, ticks (number of trades), volume (number of contracts) and price range. All four types of charts use the same market information (price, volume, etc.), but they display the information slightly differently.

Tick Charts

Charts based upon ticks make a new price bar (or candlestick, line, etc.) every time a specific number of trades are completed. Popular numbers of ticks are 55 ticks, 89 ticks, 133 ticks, 233 ticks, 500 ticks and 1000 ticks which are all short term timeframes. As tick based charts only make new bars when there have been enough trades, they adjust to the market, making bars less often when the market is moving slowly.

Explanation of Tick Charts:

On most charts, each bar represents a period of time.

- On a daily chart, each bar contains all the price action of that one day and when the next day starts, a new bar is plotted.
- On a 5 minute chart, each bar represents all the price action for 5 minutes and when the 6th minute begins, the chart plots a new bar.

“Tick” charts are different in that each bar does not represent any particular amount of time. A “tick” is a trade. So every time someone places a trade, that is called a “tick.”

For example, a 233 tick chart, creates a bar that includes all the price action for 233 trades. When the 234th trade goes through the market, the chart plots a new bar.

- When the market is slow, it could take 5 minutes for 233 trades to go through the market.
- When the market is fast, it could take 30 seconds for 233 trades to go through the market.

Tick charts are a way of incorporating volume into the price bars and price formations themselves.

However, remember it isn't really measuring volume directly because trades (“ticks”) will have varying amounts of volume. One trade could be for a single contract, and another could be for 50 contracts.

You can also plot “volume charts” in which each bar represents how many contracts (shares) each bar will represent rather than how many trades.

Many traders prefer tick charts for several reasons:

1. Tick charts tend to create more symmetrical patterns than regular minute charts because when the market is extremely slow, minute charts will continue to plot a lot of small bars that go nowhere. When the market is fast, it will create very long bars, because it can't create a new bar until time is up (1, 3 and 5 minute charts, etc.).
2. Tick charts often create more narrow range bars than minute charts at turning points, thus allowing traders to keep their risk smaller (because their risk is defined by the range of the bars at cycle turning points in the market).

Some day traders believe that this gives tick charts an advantage over time charts. There is no best time frame to fit every one. It really depends on your personality, trading style and risk tolerance. So how do you determine what time frame to use for your trading? One way to find out is through back-testing and finding the best risk/reward ratio that you feel comfortable with. Pull up a chart and plot the entries and logical exits and mark them on the chart. Then calculate the average risk/reward ratio for that time frame. If risk control is what you desire and the difference between an entry signal and exit signal is too great for your taste, try a smaller tick count. Do so until you find a risk/reward ratio that you feel comfortable with.

Time Charts

Popular day trading time charts include 1, 3 and 5 minute charts. In markets that are a bit stagnant, these time sequences work well. Many traders have used time charts in very volatile markets with great success. In heavily traded and trending markets we recommend tick charts and in more stagnant, choppy and consolidating markets, we prefer time charts. Use the charts to practice and flip back and forth. You will be amazed at how the greatest set-up with a specific tick chart looks like when you see the same information graphed in a specific minute sequence.

Again, there's no best interval for day trading. Each has advantages and disadvantages, so you should evaluate them for yourself and choose an interval that fits your personality, trading style and risk tolerance.

- Faster charts give you more trades per day and can lower your risk per trade, but at the expense of being noisy (having more meaningless and false moves) and requiring you to make faster decisions since the bars close faster, especially in fast markets.
- The slower charts (longer time-frames) grant you more time to make trading decisions and have less noise, but since the point range of each bar is bigger, your risk per trade is larger. In addition, since they provide fewer trades per day, it's easier to get lulled to sleep during long periods of insignificant activity.

Range Charts

Range charts have also become a popular chart setting for many traders. Charts based upon price range make a new price bar (or candlestick, line, etc.) every time the price has moved a specific distance. Popular range charts include 3, 4 and 5 range charts. As price range based charts only make new bars when there has been enough price movement, they adjust to the market, creating bars less often when the market is stuck in a small range (i.e. not moving). Some day traders believe that this gives range charts an advantage over time charts. Range charts appear different from other types of charts, because each bar (or

candlestick, line, etc.) has the same range (high - low) and therefore has the same size when displayed on the chart. Again, you should evaluate different settings for yourself and choose a range that fits your personality, trading style and risk tolerance.

Swing Trading Charts

One of the most crucial elements of swing trading is knowing which timeframe to trade. There are a wide variety of timeframes that a swing trader has available to them. It should be of great importance then for any trader to know which timeframes give them that much needed trading edge. There are a lot of timeframes you could swing trade with, but can you get an edge by using one or two over others? The 30 minute, 60 minute, 2 hour, 4 hour and daily timeframes are a popular choice among swing traders and these timeframes are high enough to remove market noise but also short enough to allow you to spot and take advantage of trends before they change. Lower timeframes (less than the 30 minute), are usually so low or fast that they are cluttered with market noise. Trading these lower timeframes successfully is difficult for anyone, especially someone who is still new to trading. The trend can be hard to spot because of all the market noise. You may also discover that trends in lower timeframes are fast and short lived and very difficult to swing trade. By the time you have identified the trend, it may have already changed and you end up trading against the new trend instead of with it. Swing trading higher timeframes greatly improves your trading edge as you are able to identify trends with much more accuracy.

Rampage Trading works in every market, with every style of trading. It also works in any market condition – bull or bear. Rampage Trading was designed to trade directionally with the prevailing trend based upon complex mathematical and statistical algorithms designed by some of the brightest minds on Wall Street.

Rampage Trading, in our opinion, is far superior to anything on the market. Our charts are easy to read and provide a true picture of what price is doing at that very moment. No complicated lines or wiggles, just a simple Buy or Sell arrow designed to provide a turning point in the market. Rampage Trading, like anything, requires a little practice by watching the signals unfold in real time and having patience to wait for trade signals and price action patterns. Rampage Trading will confirm what the market is saying and will provide an invaluable aid in the interpretation of market action.

Rampage Trading Email: info@rampagetrading.com

Please read & agree with our Risk Disclosure/Disclaimer before using our service.

<http://www.rampagetrading.com/disclaimer>

Risk Disclosure/Disclaimer: This software is provided "as is," without any express or implied warranty of any kind and to be used at your own risk. The developers or company shall not be liable for damages of any kind from the use or reliance on this software. The attached indicator or trading system is intended to be used as guidelines and in no way constitute any advice or recommendation with regards to trading decisions. There are no refunds once the software is shipped and delivered.

The risk of loss trading commodities or futures can be substantial. Commodity trading has large potential risks, in addition to any potential rewards. You must be aware of the risks and be willing to accept them in order to invest in the futures or commodities markets. Don't trade with money you can't afford to lose. This is neither a solicitation nor an offer to buy or sell commodity interests. The use or placement of any stop-loss or stop-limit orders may not limit your losses and you could lose more than your intended amount of money at risk. Past performance of any indicator, trading system or methodology is not indicative of future results.

Your use of this software shall serve as your acceptance of this disclaimer and that you acknowledge that this indicator is licensed for your personal use only. The strategy, indicator and source codes remain the intellectual property of Rampage Trading and shall not be copied or shared without permission.

Trading is considered a high-risk speculative strategy. Only risk capital should be used and the rigid observation of a system for loss control is strongly recommended. Additionally, the use of margin may dramatically increase the risks associated with trading. Rampage Trading make no claims whatsoever regarding past or future performance. Past results are no indication of future performance. Any trade alert is for educational purposes only. Hypothetical or simulated performance results have certain inherent limitations. Unlike an actual performance record, simulated results do not represent actual trading. Also, since the trades have not actually been executed, the results may have under – or overcompensated for the impact, if any, of certain market factors, such as lack of liquidity. Simulated trading programs in general are also subject to the fact that they are designed with the benefit of hindsight. No representation is being made that any account will or is likely to achieve profits or losses similar to those shown.

Software User Agreement

IMPORTANT: PLEASE READ THIS AGREEMENT CAREFULLY BEFORE CONTINUING WITH THE INSTALLATION PROCESS OF THE SOFTWARE ("THE SOFTWARE"). BY INSTALLING THE SOFTWARE, YOU AGREE TO BE BOUND BY THE TERMS OF THIS AGREEMENT. IF YOU DO NOT AGREE TO THE TERMS OF THIS AGREEMENT, DO NOT INSTALL THE SOFTWARE.

1. License. If you have purchased a license to the Software, Rampage Trading grants you a nonexclusive right and license to use the Software and the related documentation (the "Documentation") as set forth in this Agreement. You may use the Software on a single computer. You may also use the Software on a second (portable or home) computer so long as only one copy is used at a time. You may make a single copy of the Software for backup and archival purposes only provided that any copy must contain all proprietary notices included in the original. You may use the Documentation to assist in your use of the Software. If you download the Software without physical delivery of Documentation, you may review the Documentation online, but you may not make further copies of the Documentation. You own the media on which the Software is recorded, but not the Software itself or any copy of it. This license is not a sale of the original or any copy of the Software.

2. Copying, Transferring or Modifying Software. The Software contains copyrighted material, trade secrets and other proprietary intellectual property. You may not permit concurrent use of the Software unless each user has an applicable license. You may not permit other individuals to use the Software except under the terms listed above. For the purposes of protecting Rampage Trading trade secrets, you may not decompile, disassemble, reverse engineer or otherwise display the Software in human readable form. You may not modify, translate, rent, lease, distribute or lend the Software, and you may not sell to others the right to use the Software on your computer. You may not remove any proprietary notices or labels on the Software. You may not copy, transfer, transmit, sublicense or assign this license or the Software except as expressly permitted in this Agreement.

3. Term. If you have purchased a license to the Software, this Agreement and license are effective from the time you accept the terms of this Agreement until this Agreement is terminated. You may terminate this Agreement at any time by destroying all copies of the Software. This Agreement will terminate immediately and without further notice if you fail to comply with any provision of this Agreement. All obligations of confidentiality and restrictions on use, and all other provisions that may reasonably be interpreted to survive termination of this Agreement, will survive termination of this Agreement for any reason. Upon termination, you agree to destroy all copies of the Software. If you have obtained an evaluation copy of the Software, and have not purchased a license to the Software, this Agreement and license are effective for a period of thirty (30) days

from the date of installation of the Software.

4. Warranty Disclaimers. THE SOFTWARE AND THE DOCUMENTATION ARE PROVIDED "AS IS" AND WITHOUT WARRANTIES OF ANY KIND, EXPRESS, STATUTORY OR IMPLIED, INCLUDING, BUT NOT LIMITED TO, THE IMPLIED WARRANTIES OF MERCHANTABILITY, FITNESS FOR A PARTICULAR PURPOSE AND NONINFRINGEMENT. THE ENTIRE RISK AS TO THE QUALITY AND PERFORMANCE OF THE SOFTWARE AND THE DOCUMENTATION IS WITH YOU. SHOULD THE SOFTWARE OR THE DOCUMENTATION PROVE DEFECTIVE, YOU (AND NOT Rampage Trading) ASSUME THE ENTIRE COST OF ALL NECESSARY SERVICING OR REPAIR. Rampage Trading DOES NOT WARRANT THAT THE FUNCTIONS CONTAINED IN THE SOFTWARE WILL MEET YOUR REQUIREMENTS OR OPERATE IN THE COMBINATION THAT YOU MAY SELECT FOR USE, THAT THE OPERATION OF THE SOFTWARE WILL BE UNINTERRUPTED OR ERROR FREE, OR THAT DEFECTS IN THE SOFTWARE WILL BE CORRECTED. NO ORAL OR WRITTEN STATEMENT BY Rampage Trading OR BY A REPRESENTATIVE OF Rampage Trading SHALL CREATE A WARRANTY OR INCREASE THE SCOPE OF THIS WARRANTY.

Notwithstanding the above, you may have certain warranty rights which vary from state to state and which cannot be disclaimed by contract. Any warranties that by law survive the foregoing disclaimers shall terminate ninety (90) days from the date you received the Software as shown by your receipt. Some states do not allow limitations on how long an implied warranty lasts, so the foregoing limitation may not apply to you if prohibited by law.

5. Limitation of Liability. YOUR SOLE REMEDIES AND Rampage Trading's ENTIRE LIABILITY ARE SET FORTH ABOVE. IN NO EVENT WILL Rampage Trading BE LIABLE FOR DIRECT, INDIRECT, INCIDENTAL OR CONSEQUENTIAL DAMAGES RESULTING FROM THE USE OF THE SOFTWARE, THE INABILITY TO USE THE SOFTWARE, OR ANY DEFECT IN THE SOFTWARE, INCLUDING ANY LOST PROFITS, EVEN IF THEY HAVE BEEN ADVISED OF THE POSSIBILITY OF SUCH DAMAGE. IN NO EVENT WILL Rampage Trading's TOTAL LIABILITY TO YOU FOR ALL DAMAGES, LOSSES, AND CAUSES OF ACTION (WHETHER IN CONTRACT, TORT, INCLUDING NEGLIGENCE, OR OTHERWISE) EXCEED THE AMOUNT YOU PAID FOR THIS PRODUCT. SOME JURISDICTIONS DO NOT ALLOW THE EXCLUSION OR LIMITATION OF RELIEF, INCIDENTAL OR CONSEQUENTIAL DAMAGES, SO THE ABOVE LIMITATION OR EXCLUSION MAY NOT APPLY TO YOU. You agree that Rampage Trading will not be liable for defense or indemnity with respect to any claim against you by any third party arising from your possession or use of the Software or the Documentation.

6. Export Control Laws. You agree to comply with all laws, rules and regulations applicable to the export of the Software or the Documentation. Specifically, you shall not export, re-export or transship the Software or the Documentation, or the

direct product thereof, in violation of any United States laws and regulations which may from time to time be applicable. None of the Software or underlying information or technology may be downloaded or otherwise exported or re-exported (i) into any country to which the U.S. has embargoed goods; or (ii) to anyone on the U.S. Treasury Department's list of Specially Designated Nationals or the U.S. Commerce Department's Table of Denial Order. By downloading or using the Software, you are agreeing to the foregoing and you are representing and warranting that you are not located in, under the control of, or a national or resident of any such country or on any such list.

7. Government Restricted Rights. The Software has been developed at private expense and is "commercial computer software" or "restricted computer software" within the meaning of the FARs, the DFARs, and any other similar regulations relating to government acquisition of computer software. Nothing contained herein will be deemed to grant any government agency any license or other rights greater than are mandated by statute or regulation for commercial computer software developed entirely at private expense.

8. Entire Agreement. This Agreement is the complete agreement between Rampage Trading and you and supersedes all prior agreements, oral or written, with respect to the subject matter hereof. If you have any questions concerning this Agreement, you may write to Rampage Trading, Customer Service, at info@rampagetrading.com.

Rampage Trading is neither a solicitation nor an offer to Buy/Sell futures or options. No representation is being made that any account will or is likely to achieve profits or losses similar to those discussed on this website. The past performance of any trading system or methodology is not necessarily indicative of future results. Futures, options, and securities trading have risk of loss and may not be suitable for all persons.

CFTC RULE 4.41 - HYPOTHETICAL OR SIMULATED PERFORMANCE RESULTS HAVE CERTAIN LIMITATIONS. UNLIKE AN ACTUAL PERFORMANCE RECORD, SIMULATED RESULTS DO NOT REPRESENT ACTUAL TRADING. ALSO, SINCE THE TRADES HAVE NOT BEEN EXECUTED, THE RESULTS MAY HAVE UNDER-OR-OVER COMPENSATED FOR THE IMPACT, IF ANY, OF CERTAIN MARKET FACTORS, SUCH AS LACK OF LIQUIDITY. SIMULATED TRADING PROGRAMS IN GENERAL ARE ALSO SUBJECT TO THE FACT THAT THEY ARE DESIGNED WITH THE BENEFIT OF HINDSIGHT.

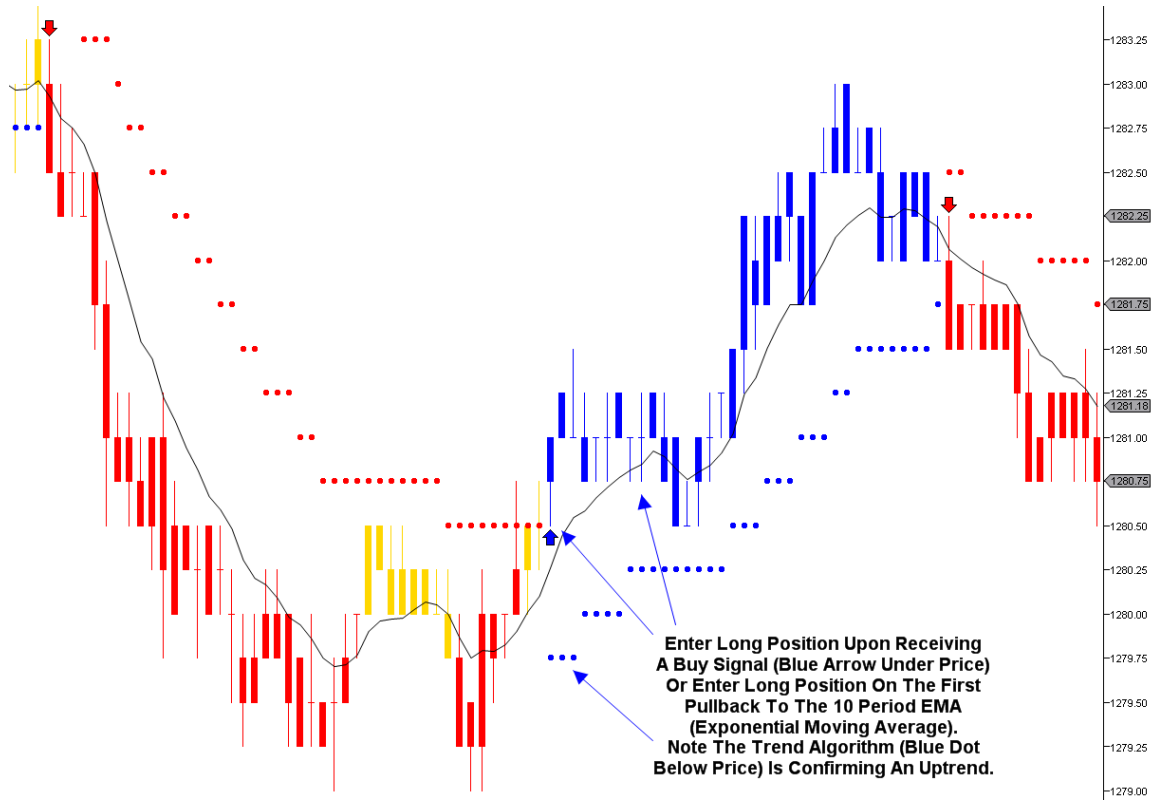
I have read the Risk Disclosure/Disclaimer, and I know that any trades that I make are my responsibility only. I fully understand that the Rampage Trading software is a tool to aid in my decisions. Any execution or signal generated by the Rampage Trading software is provided for educational purposes only. It is my responsibility to take trades and manage them. Any profit or loss from the use of the Rampage Trading software is my responsibility only. I will not hold Rampage Trading responsible for any trades recommended by the software. I certify that I have read and agree to the risk disclosure and disclaimer statements. I understand that no warranty or guarantee has been made to me by Rampage Trading.

Trading Rules:

Buy Signals:

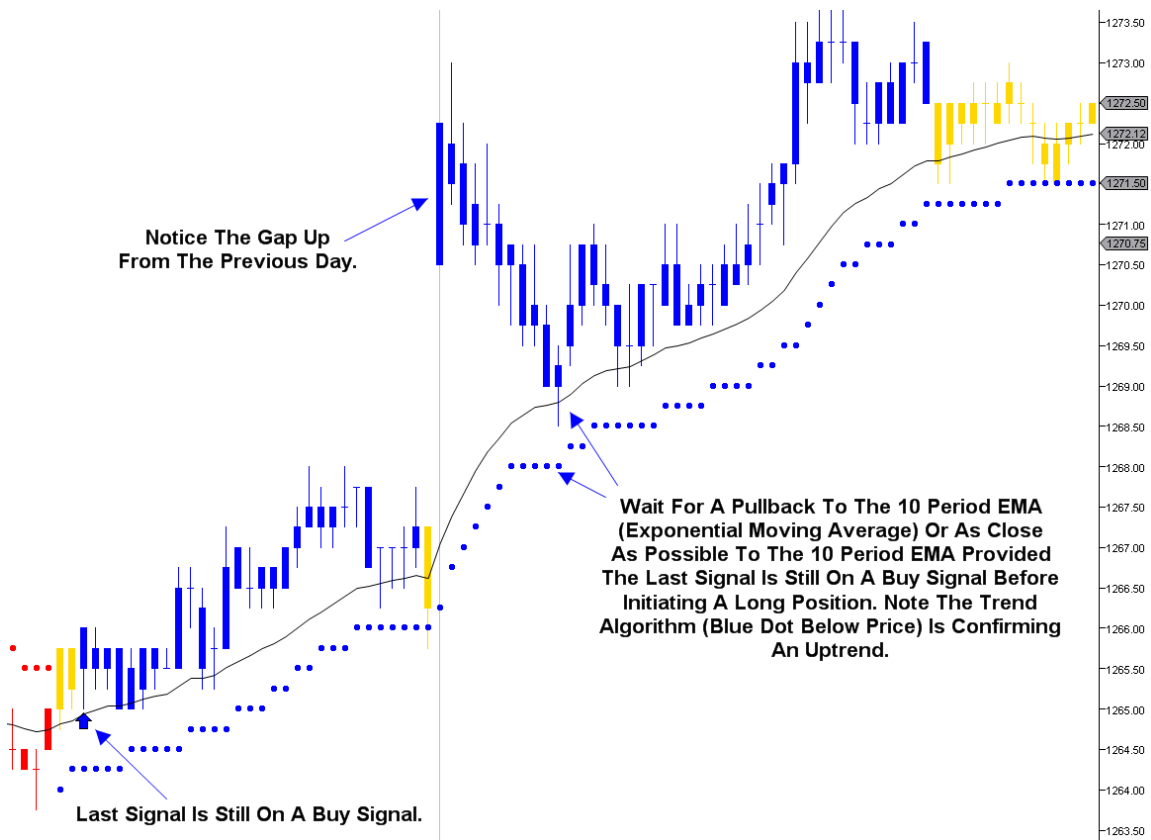
- Buy – Enter a long position upon receiving a **Blue** arrow (which will be indicated under price). You may also confirm each Buy signal with our proprietary trend algorithms represented by **Blue** colored dots below price. A **Blue** dot below price represents a confirmed uptrend. If the last trend algorithm is **Blue** in color and you receive a Buy signal, you may take the long trade. You may take the long trade based solely on the Buy signal you receive without using the trend algorithms. However, we recommend the Buy signal be in agreement with the last trend algorithm colored dot (**Blue** is bullish). You may also enter a long position based on the color change of the trend algorithm from **Red** to **Blue** provided the last arrow is still on a Buy signal.
- Recommended Buy – Enter a long position on the first pullback to the 10 period EMA (Exponential Moving Average) after a Buy signal is given. After receiving a Buy signal, wait for price to pullback to the 10 period EMA (Exponential Moving Average) or as close to it as possible before taking a long position. If a Buy signal is given and price is not extended from the 10 period EMA (Exponential Moving Average), you may take the trade immediately. We recommend a 10 period EMA (Exponential Moving Average) as your moving average. You may also confirm each Buy signal with our proprietary trend algorithms represented by **Blue** colored dots below price. A **Blue** dot below price represents a confirmed uptrend. If the last trend algorithm is **Blue** in color and you receive a Buy signal, you may take the long trade. You may take the trade based solely on the Buy signal you receive without using the trend algorithms. However, we recommend the Buy signal be in agreement with the last trend algorithm colored dot (**Blue** is bullish). You may also enter a long position based on the color change of the trend algorithm from **Red** to **Blue** provided the last arrow is still on a Buy signal.
- Exit long position after the appearance of the first **Red** arrow (which will be indicated above price) or if the trend algorithm changes color (from **Blue** to **Red**) or if price closes below our trend algorithms (represented by **Blue** colored dots below price). Values of our trend algorithms represent key support/resistance areas and are used as protection stops if the market turns against our position.

Recommended Buy Signal Example:



Continuation Buy Example:

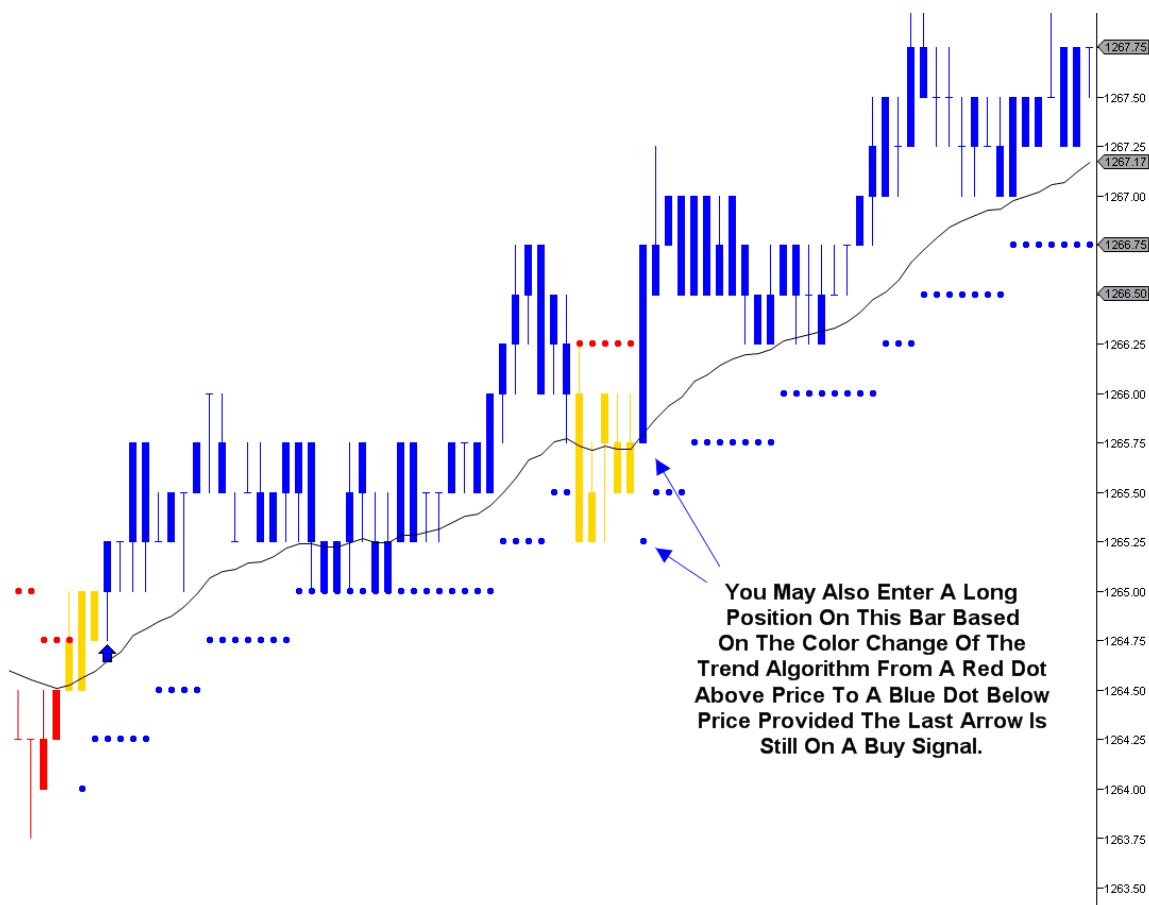
This strategy pertains to day traders. If the last signal from the previous day is still on a Buy signal and our proprietary trend algorithms are also **Blue** in color (**Blue** dots below price represent a confirmed uptrend), wait for a pullback to the 10 period EMA (Exponential Moving Average) or as close as possible to the 10 period EMA (Exponential Moving Average) before initiating a long position. This strategy usually occurs during the first hour of the day as a pullback to the 10 period EMA (Exponential Moving Average) is usually a good entry point before price resumes its uptrend.



Trend Algorithm Buy Example:

Our proprietary trend algorithms, represented by **Blue** or **Red** colored dots above or below price are universal and will work on all time frames. A **Blue** colored dot (which will be indicated below price) represents a confirmed uptrend. A **Red** colored dot (which will be indicated above price) represents a confirmed downtrend. You cannot adjust the trend algorithms. If the last trend algorithm is **Blue** in color and you receive a Buy signal, you may take the long trade. If the last trend algorithm is **Red** in color and you receive a Sell (Short) signal, you may take the Sell (Short) trade. You may take trades based solely on the Buy or Sell (Short) signals you receive without using the trend algorithms. However, we recommend the Buy or Sell (Short) signals be in agreement with the last trend algorithm colored dot (**Blue** is bullish while **Red** is bearish). If in agreement, the trade will usually have a higher probability of success.

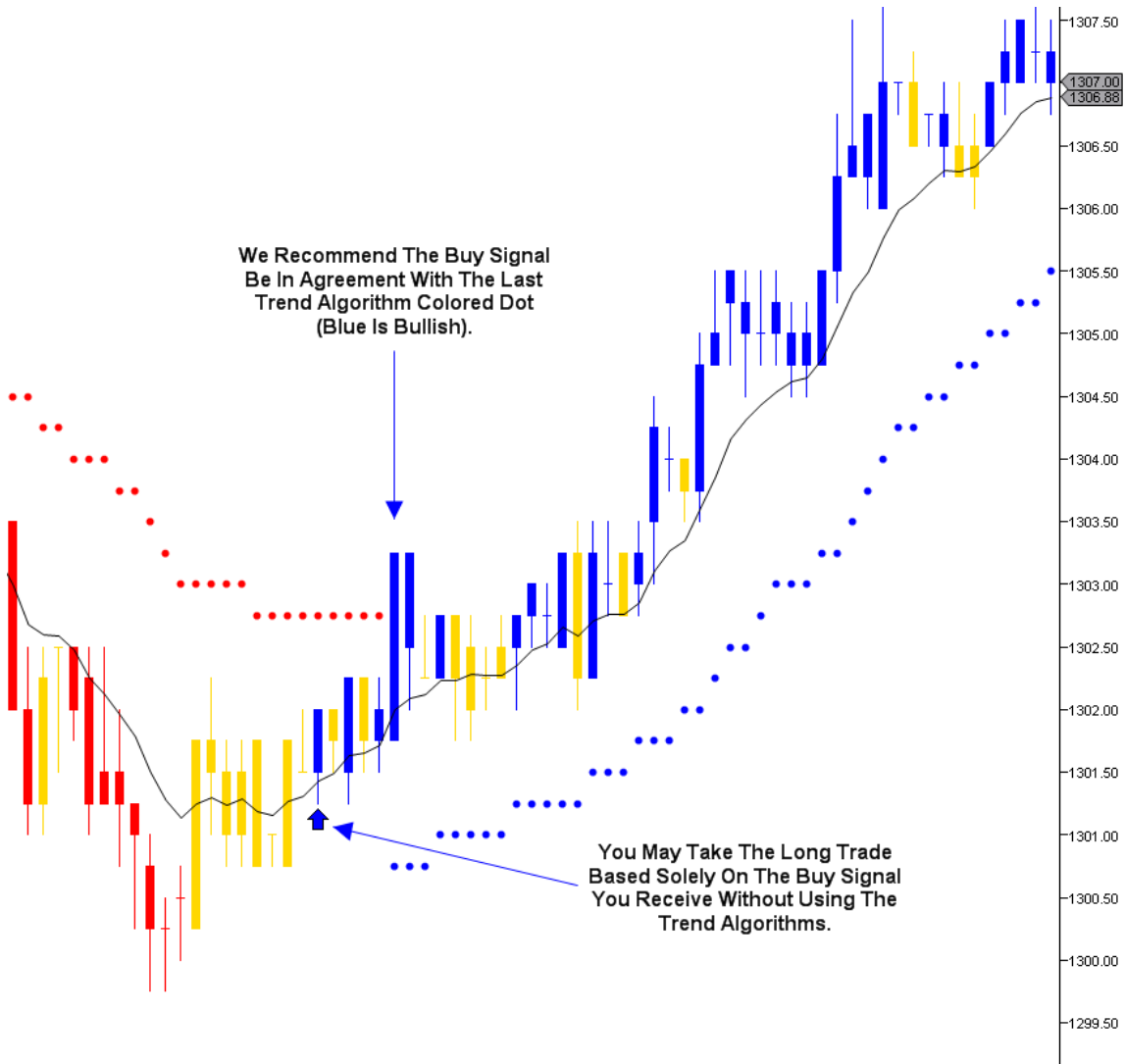
You may also enter a long position based on the color change of the trend algorithm from **Red** to **Blue** provided the last arrow is still on a Buy signal.



Non-Confirmation Buy Signal Example:

You may take the long trade based solely on the Buy signal you receive without using the trend algorithms. However, we recommend the Buy signal be in agreement with the last trend algorithm colored dot (Blue is bullish).

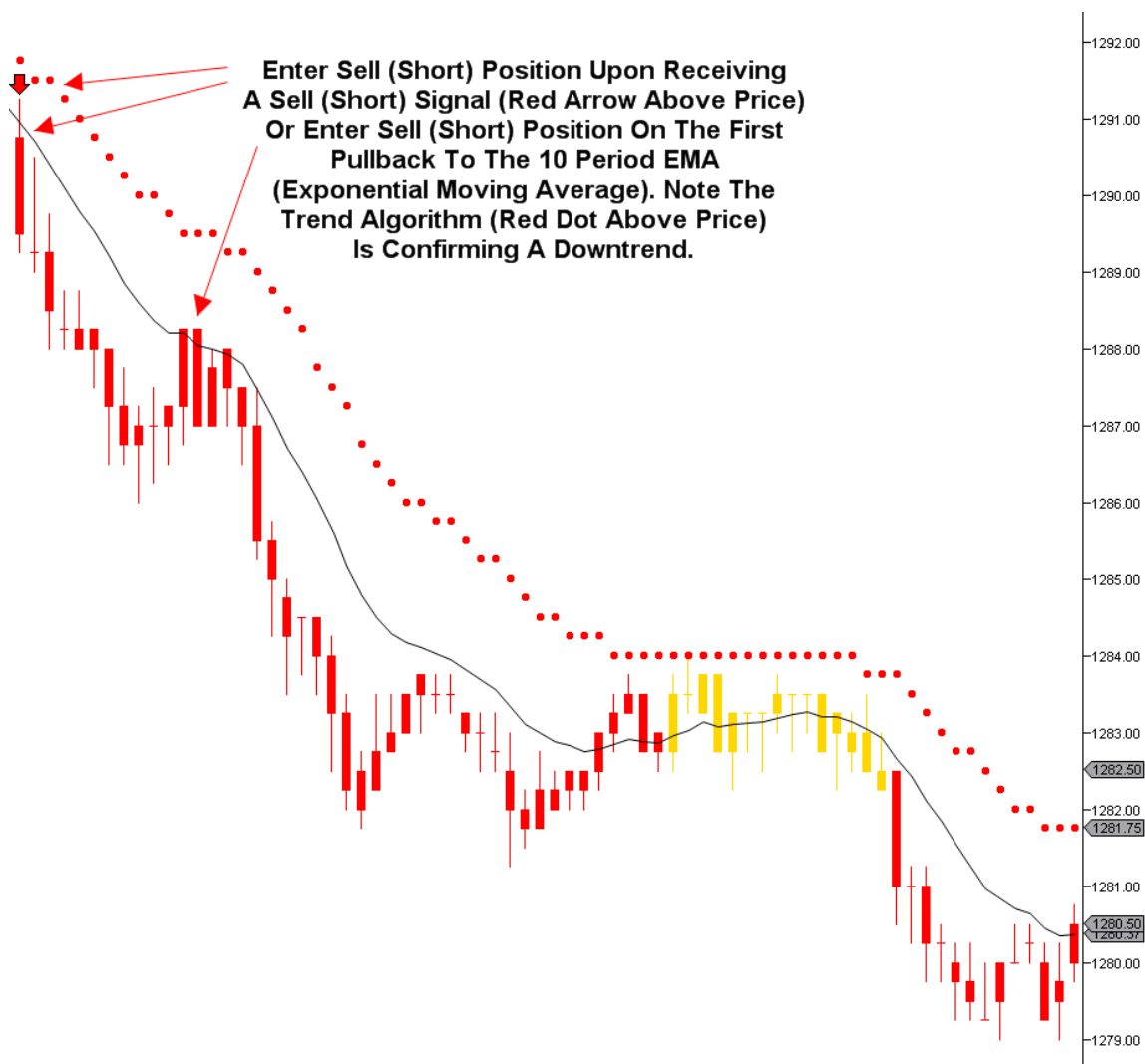
You may enter a long position based on the color change of the trend algorithm from Red to Blue provided the last arrow is still on a Buy signal.



Sell Signals:

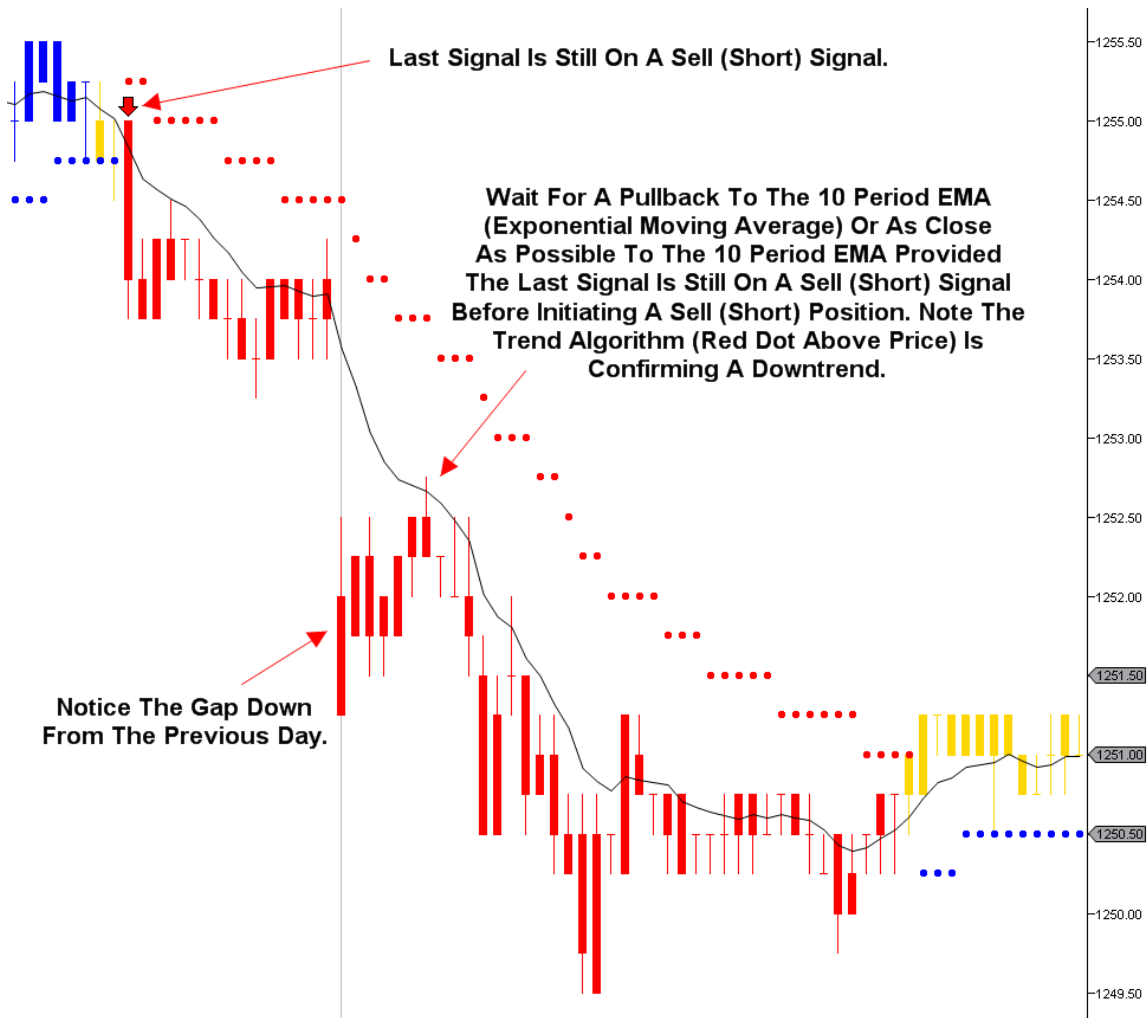
- Sell – Enter a Sell (Short) position upon receiving a **Red** arrow (which will be indicated above price). You may also confirm each Sell (Short) signal with our proprietary trend algorithms represented by **Red** colored dots above price. A **Red** dot above price represents a confirmed downtrend. If the last trend algorithm is **Red** in color and you receive a Sell (Short) signal, you may take the Sell (Short) trade. You may take the Sell (Short) trade based solely on the Sell (Short) signal you receive without using the trend algorithms. However, we recommend the Sell (Short) signal be in agreement with the last trend algorithm colored dot (**Red** is bearish). You may also enter a Sell (Short) position based on the color change of the trend algorithm from **Blue** to **Red** provided the last arrow is still on a Sell (Short) signal.
- Recommended Sell – Enter a Sell (Short) position on the first pullback to the 10 period EMA (Exponential Moving Average) after a Sell (Short) signal is given. After receiving a Sell (Short) signal, wait for price to pullback to the 10 period EMA (Exponential Moving Average) or as close to it as possible before taking a Sell (Short) position. If a Sell (Short) signal is given and price is not extended from the EMA (Exponential Moving Average), you may take the trade immediately. We recommend a 10 period EMA (Exponential Moving Average) as your moving average. You may also confirm each Sell (Short) signal with our proprietary trend algorithms represented by **Red** colored dots above price. A **Red** dot above price represents a confirmed downtrend. If the last trend algorithm is **Red** in color and you receive a Sell (Short) signal, you may take the Sell (Short) trade. You may take the trade based solely on the Sell (Short) signal you receive without using the trend algorithms. However, we recommend the Sell (Short) signal be in agreement with the last trend algorithm colored dot (**Red** is bearish). You may also enter a Sell (Short) position based on the color change of the trend algorithm from **Blue** to **Red** provided the last arrow is still on a Sell (Short) signal.
- Exit Sell (Short) position after the appearance of the first **Blue** arrow (which will be indicated under price) or if the trend algorithm changes color (from **Red** to **Blue**) or if price closes above our trend algorithms (represented by **Red** colored dots above price). Values of our trend algorithms represent key support/resistance areas and are used as protection stops if the market turns against our position.

Recommended Sell (Short) Signal Example:



Continuation Sell (Short) Example:

This strategy pertains to day traders. If the last signal from the previous day is still on a Sell (Short) signal and our proprietary trend algorithms are also **Red** in color (**Red** dots above price represent a confirmed downtrend), wait for a pullback to the 10 period EMA (Exponential Moving Average) or as close as possible to the 10 period EMA (Exponential Moving Average) before initiating a Sell (Short) position. This strategy usually occurs during the first hour of the day as a pullback to the 10 period EMA (Exponential Moving Average) is usually a good entry point before price resumes its downtrend.



Trend Algorithm Sell (Short) Example:

Our proprietary trend algorithms, represented by **Blue** or **Red** colored dots above or below price are universal and will work on all time frames. A **Blue** colored dot (which will be indicated below price) represents a confirmed uptrend. A **Red** colored dot (which will be indicated above price) represents a confirmed downtrend. You cannot adjust the trend algorithms. If the last trend algorithm is **Blue** in color and you receive a Buy signal, you may take the long trade. If the last trend algorithm is **Red** in color and you receive a Sell (Short) signal, you may take the Sell (Short) trade. You may take trades based solely on the Buy or Sell (Short) signals you receive without using the trend algorithms. However, we recommend the Buy or Sell (Short) signals be in agreement with the last trend algorithm colored dot (**Blue** is bullish while **Red** is bearish). If in agreement, the trade will usually have a higher probability of success.

You may also enter a Sell (Short) position based on the color change of the trend algorithm from **Blue** to **Red** provided the last arrow is still on a Sell (Short) signal.



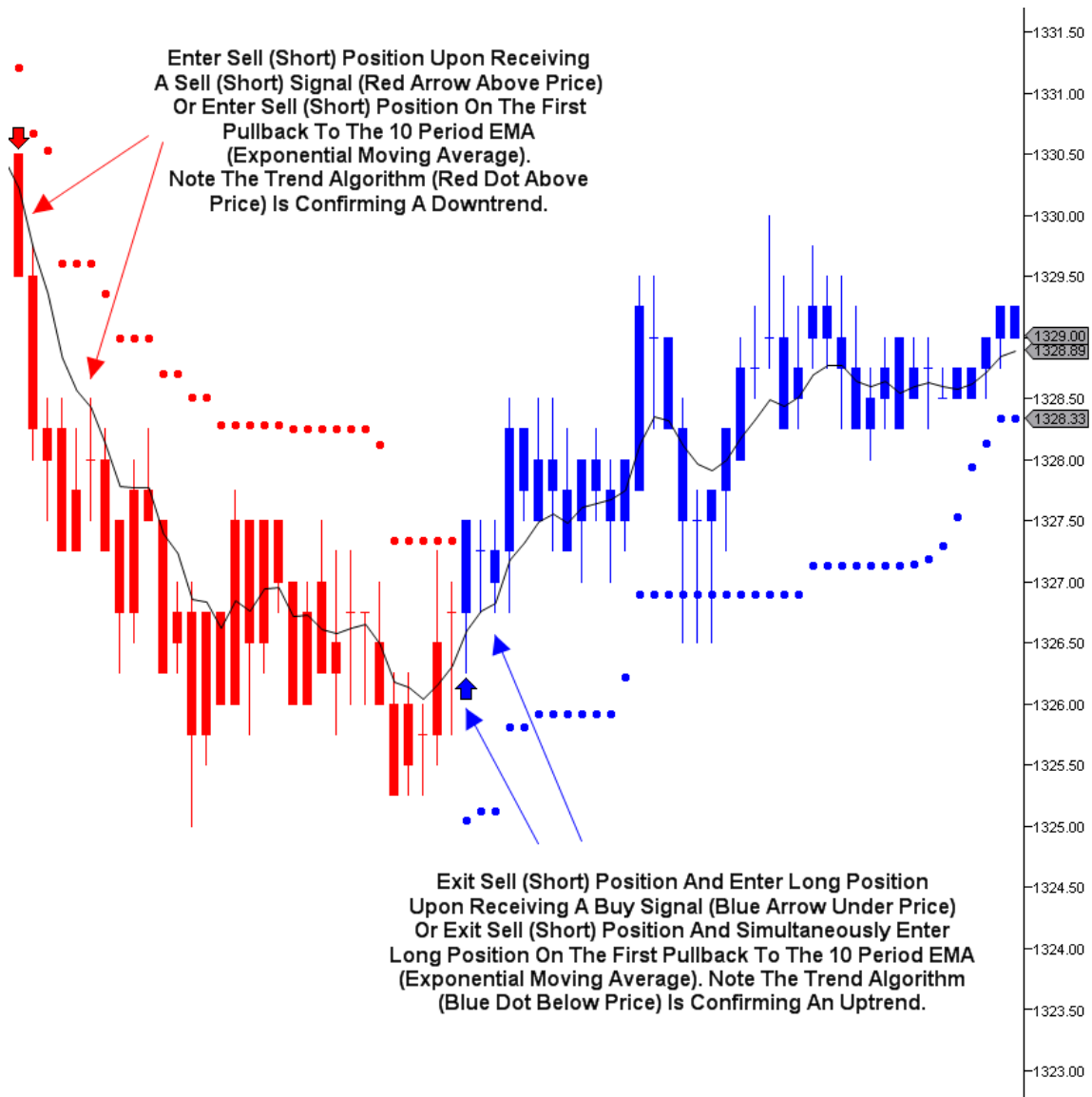
Non-Confirmation Sell (Short) Signal Example:

You may take the Sell (Short) trade based solely on the Sell (Short) signal you receive without using the trend algorithms. However, we recommend the Sell (Short) signal be in agreement with the last trend algorithm colored dot (Red is bearish).

You may enter a Sell (Short) position based on the color change of the trend algorithm from Blue to Red provided the last arrow is still on a Sell (Short) signal.



Buy and Sell (Short) Example:



Multiple Trend/Time Frame Analysis

Successful traders learn how to identify an underlying trend and trade around it accordingly. Trends can be classified as short term, intermediate and primary. Rampage Trading highly recommends the use of Multiple Trend/Time Frame Analysis when using our software. By taking the time to analyze Multiple Trend/Time Frame charts, traders can greatly increase their odds for a successful trade and minimize choppy or range bound markets. It is up to each individual trader to identify a Multiple Trend/Time Frame chart they are comfortable with.

What is Multiple Trend/Time Frame Analysis?

Multiple Trend/Time Frame Analysis (MTA) is the inspection of charts/trends, starting with the largest trends and timeframes, and working backwards down through successively smaller time frames to see how the smaller time frames and trends feed the larger time frames. When the smaller time frames are in agreement with the larger trends, traders can enter a trade in the direction of the trend with very good safety. If no trend exists, the smaller timeframes and trends will, at some point, build an uptrend or downtrend.

When using Multiple Trend/Time Frame Analysis (MTA), the smaller trends are used to enter the larger trends, if a trend is available or to observe how the larger trends are built from the smaller time frames. If a larger trend is currently established on a particular market, traders would enter the trade when the smaller trends and time frames are in agreement with the larger trends. The smaller time frames confirm the continuation of the established trend.

Multiple Trend/Time Frame Analysis (MTA) enables traders to identify whether or not a larger trend is starting or is already established. If a market is deep into its trend or movement, Multiple Trend/Time Frame Analysis (MTA) still works but the risk/reward profile of a new entry changes because the trend may be nearing the end of this move. However, once again, the use of Multiple Trend/Time Frame Analysis (MTA) will keep traders informed of this.

What Multiple Trend/Time Frames should you be tracking?

As a general rule, the higher trend/time frame always overrules the lower trend/time frame. The higher the trend/time frame, the more reliable the signal. As traders drill down in trend/time frame, the charts become more polluted with false moves and noise. Ideally, traders should analyze multiple trend/time frames to define the primary trend of whatever market they are trading and trade in the direction of the primary trend.

Examples of Multiple Trend/Time Frame Analysis (MTA) include:

- A day trader could trade off of a 1 minute chart and use a 3, 5 or 15 minute chart to define the primary trend. For example, if the primary trend (3, 5 or 15 minute chart) suggests an uptrending market, then the day trader will only take long positions and will not Sell (Short). Similarly, if the primary trend (3, 5 or 15 minute chart) suggests a downtrending market, then the day trader will only take Sell (Short) positions and will not take any long positions.
- A swing trader, who utilizes daily charts for their decisions, could use weekly charts to define the primary trend. For example, if the primary trend (weekly chart) suggests an uptrending market, then the swing trader will only take long positions and will not Sell (Short). Similarly, if the primary trend (weekly chart) suggests a downtrending market, then the swing trader will only take Sell (Short) positions and will not take any long positions.
- A long-term position trader could utilize weekly charts while using monthly charts to define the primary trend. For example, if the primary trend (monthly chart) suggests an uptrending market, then the position trader will only take long positions and will not Sell (Short). Similarly, if the primary trend (monthly chart) suggests a downtrending market, then the position trader will only take Sell (Short) positions and will not take any long positions.

The Multiple Trend/Time Frames listed above are just examples and the selection of what group of Multiple Trend/Time Frames to use is unique to each individual trader.

RampageV7MTA

Rampage Trading is excited to announce the release of the RampageV7MTA (Multiple Trend/Time Frame Analysis) Indicator. The RampageV7MTA Indicator works in conjunction with the RampageV7 Indicator to assist each trader in identifying specifically selected trend/time frames. Traders can now analyze as many different trend/time frames all without monitoring multiple charts. The RampageV7MTA Indicator allows traders to trade any market and any time frame with greater confidence and accuracy knowing your selected trend/time frame is in alignment with your trade.

If the RampageV7MTA Indicator is **Blue** in color, the selected trend/time frame is bullish as the last signal for the selected trend/time frame trend is still on a Buy signal (**Blue** arrow under price). As a general rule, if the RampageV7MTA Indicator is **Blue** in color, your selected trend/time frame is on a Buy signal and you should only be looking to Buy. Why? Because your selected trend/time frame is showing an uptrending market and you are greatly increasing your probability of success by trading with the trend.

If the RampageV7MTA Indicator is **Red** in color, the selected trend/time frame is bearish as the last signal for the selected trend/time frame is still on a Sell (Short) signal (**Red** arrow above price). As a general rule, if the RampageV7MTA Indicator is **Red** in color, your selected trend/time frame is on a Sell (Short) signal and you should only be looking to Sell (Short). Why? Because your selected trend/time frame is showing a downtrending market and you are greatly increasing your probability of success by trading with the trend.

Selecting a Specific Trend/Time Frame:

There is obviously a limit as to how many selected RampageV7MTA Indicators you can analyze. Keep it simple. Use at least one, but not more than two as adding more will be excessive.

Day Trading Example:

- 1 minute (entry chart) - Sub Graph RampageV7MTA Indicator Settings; 3 or 5 minute (short-term trend) and/or 15 minute (long-term trend).

Swing Trading Example:

- 30 minute (entry chart) - Sub Graph RampageV7MTA Indicator Settings; Daily (short-term trend) and/or Weekly (long-term trend).

Position Trading Example:

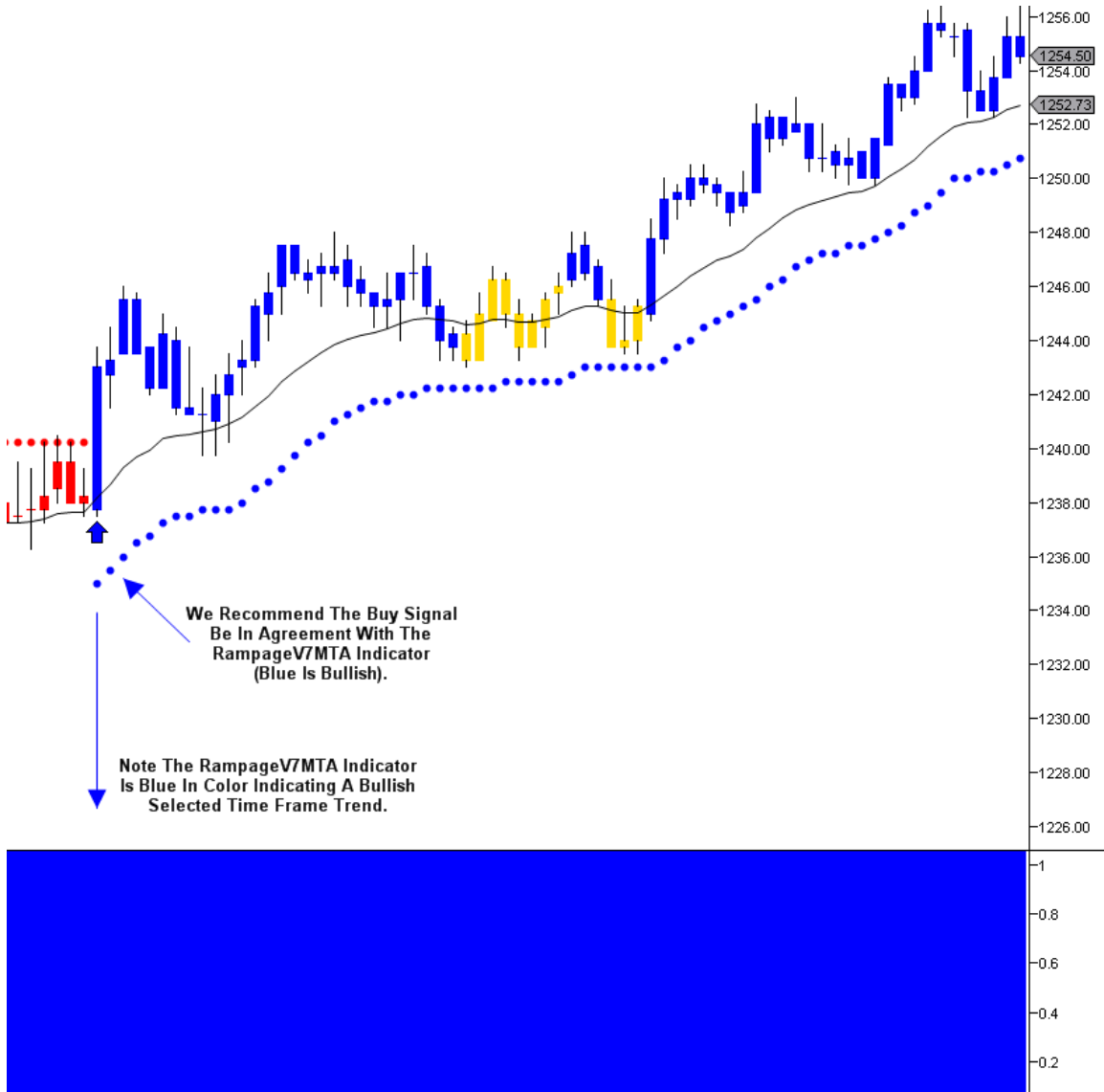
- Daily chart (entry chart) - Sub Graph RampageV7MTA Indicator Settings; Weekly (short-term trend) and/or Monthly (long-term trend).

These are just a few RampageV7MTA Indicator setting examples. We highly recommend adjusting your RampageV7MTA Indicator setting to match your trading style and comfort level. Find a selected trend/time frame that works for you.

Please note your selected RampageV7MTA Indicator setting must always be set to a higher time frame than your selected entry chart time frame. For example, if your entry chart time frame is a 1 minute chart, your selected RampageV7MTA Indicator setting must be set to any time frame greater than a 1 minute chart, i.e. 2, 3, 5 minute, etc. Otherwise, the RampageV7MTA Indicator will not display.

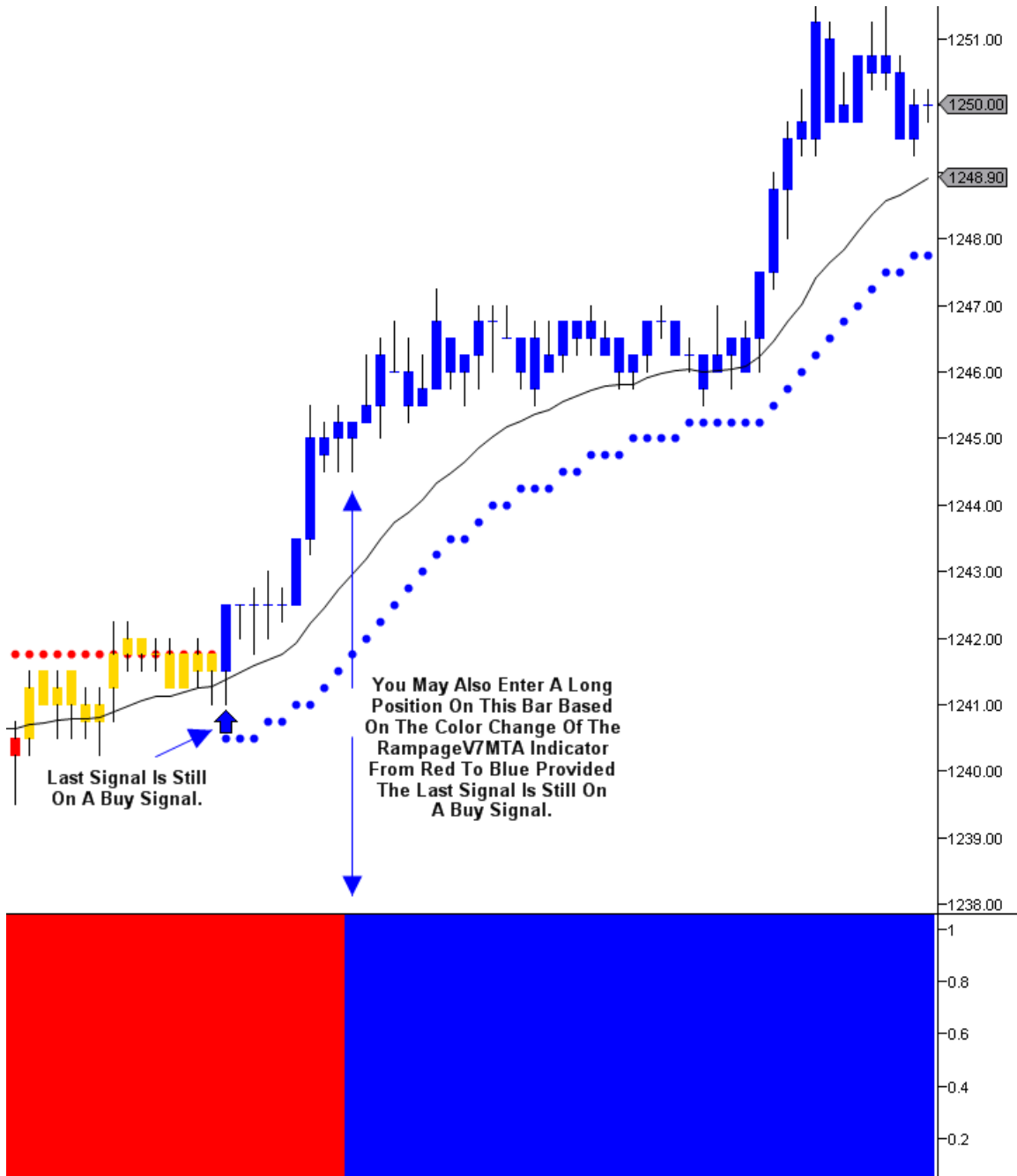
RampageV7MTA Indicator Recommended Buy Signal Example:

If the RampageV7MTA Indicator is **Blue** in color (**Blue Is Bullish**) and you receive a Buy signal, you may take the long trade. You may take the long trade based solely on the Buy signal you receive without confirmation from the RampageV7MTA Indicator. However, we recommend the Buy signal be in agreement with the RampageV7MTA Indicator (**Blue Is Bullish**). If in agreement, the trade will usually have a higher probability of success. Please note you must select your desired setting for the RampageV7MTA Indicator.



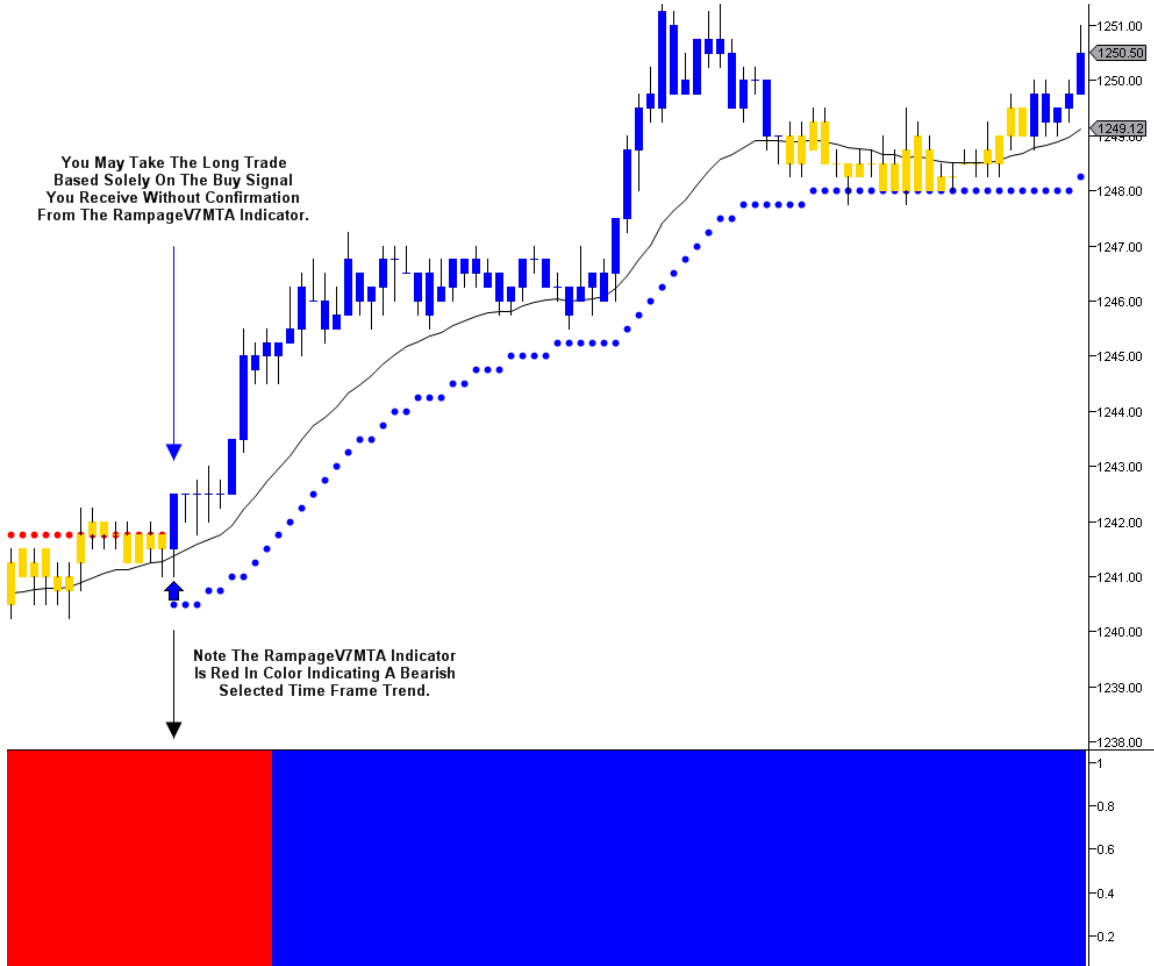
RampageV7MTA Indicator Buy Example:

You may also enter a long position based on the color change of the RampageV7MTA Indicator from Red to Blue (Blue Is Bullish) provided the last signal is still on a Buy signal.



Non-Confirmation RampageV7MTA Indicator Buy Signal Example:

You may take the long trade based solely on the Buy signal you receive without confirmation from the RampageV7MTA Indicator. However, we recommend the Buy signal be in agreement with the RampageV7MTA Indicator (**Blue Is Bullish**).



RampageV7MTA Indicator Recommended Sell (Short) Signal Example:

If the RampageV7MTA Indicator is **Red** in color (**Red Is Bearish**) and you receive a Sell (Short) signal, you may take the Sell (Short) trade. You may take the Sell (Short) trade based solely on the Sell (Short) signal you receive without confirmation from the RampageV7MTA Indicator. However, we recommend the Sell (Short) signal be in agreement with the RampageV7MTA Indicator (**Red Is Bearish**). If in agreement, the trade will usually have a higher probability of success. Please note you must select your desired setting for the RampageV7MTA Indicator.



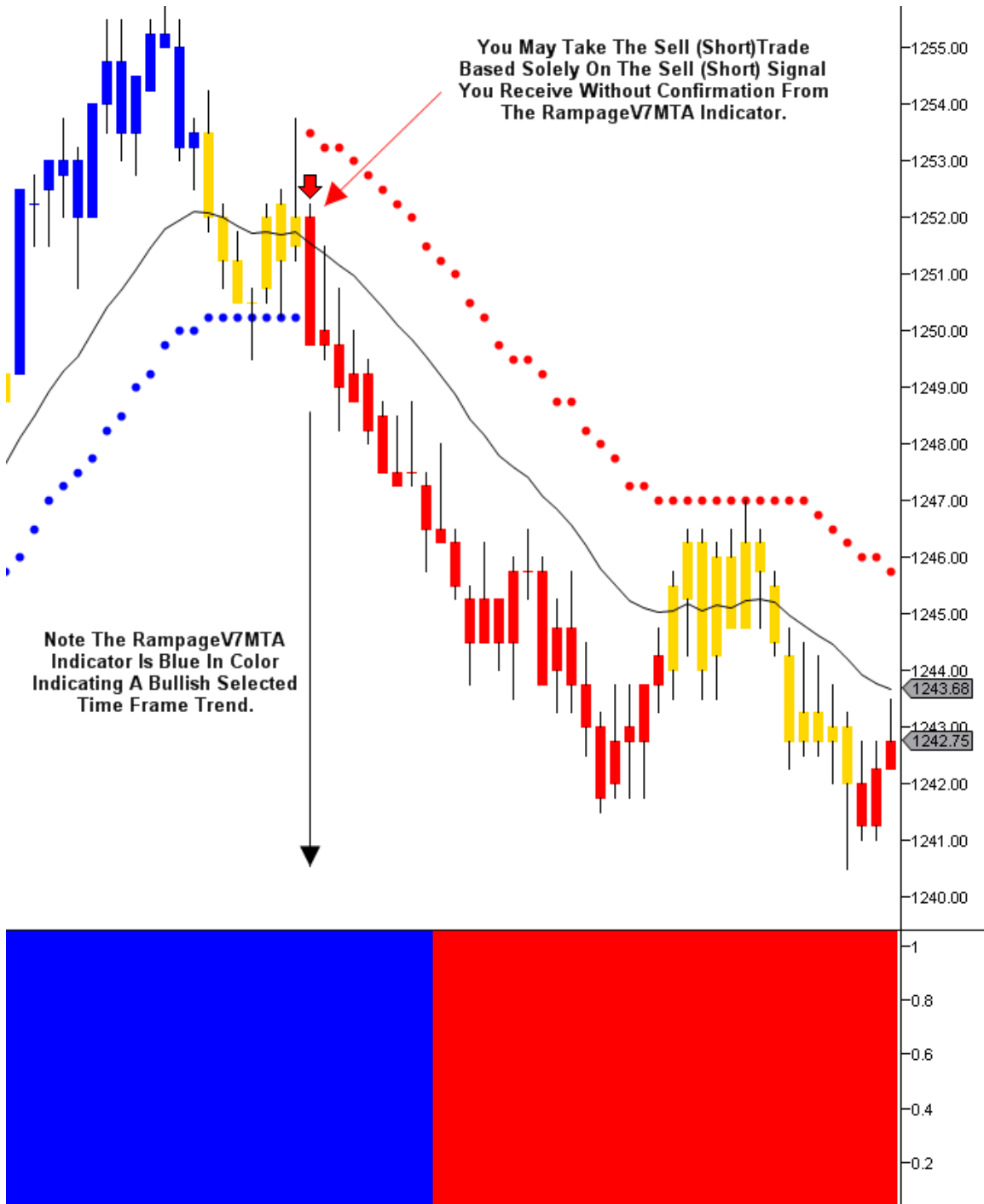
RampageV7MTA Indicator Sell (Short) Example:

You may also enter a Sell (Short) position based on the color change of the RampageV7MTA Indicator from Blue to Red (Red Is Bearish) provided the last signal is still on a Sell (Short) signal.



Non-Confirmation RampageV7MTA Indicator Sell (Short) Signal Example:

You may take the Sell (Short) trade based solely on the Sell (Short) signal you receive without confirmation from the RampageV7MTA Indicator. However, we recommend the Sell (Short) signal be in agreement with the RampageV7MTA Indicator (Red Is Bearish).



Installing the RampageV7MTA Indicator:

After opening your chart, you can apply the newly installed RampageV7MTA Indicator by right-clicking the chart and selecting indicators or simply pressing the CTRL + I combination. You can find the newly installed RampageV7MTA Indicator at the top of the indicator list in the newly opened indicators window. You will see the name 'RampageV7MTA.'

Double click on the Indicator's name "RampageV7MTA" to add it to the lower left area of the Indicators window. Under "Parameters" select the "Time Frame Type" you wish to analyze, i.e. Tick, Range, Minute, etc. Next, select the "Time Frame Value" for the "Time Frame Type" you wish to analyze. For example, if you selected Tick and you would like to analyze a 500 Tick chart, input the number 500 in the "Time Frame Value" field. If you selected Minute and you would like to analyze a 3 minute chart, input the number 3 in the "Time Frame Value" field. Please leave all other settings as they are. After finishing, click "Apply", then "OK."

For more information on setting up and using the RampageV7MTA Indicator, please visit our "Members" section on our website:

<http://www.rampagetrading.com/members>

RVOL (Rampage Volume)

Rampage Trading is excited to announce the release of our Institutional grade volume analysis indicator. RVOL (Rampage Volume) will revolutionize the trading industry forever. Until now, this indicator was only available to our Institutional clients.

You will never trade the same again as RVOL will allow you to stay on the same side as the Institutions.

The RVOL indicator alone retails for thousands of dollars but we are exclusively offering it to our retail clients FREE as part of their subscription.

How would your trading change if you knew what the Institutional traders knew? When the trends were going to start? What direction they were most likely to move? When those trends were most likely to stall out into consolidation?

Professional traders know the importance of **NEVER** doing the opposite of what Institutional traders are doing. That's because the market moves in the same direction that Institutional traders are moving in.

When Institutional traders are in accumulation mode, the market goes UP.
When Institutional traders are in distribution mode, the market goes DOWN.

Institutional traders are those who trade on behalf of others and include hedge funds, investment banks, brokerage firms, commercial banks, mutual funds, pension funds, insurance companies and large investment advisory firms. They trade large blocks of shares and therefore, command a better price and literally move the market. An individual investor selling a small number of shares has no influence on the market compared to Institutional traders looking to move hundreds of thousands or millions of shares through high frequency trading, algorithms, flash orders and dark pools.

It's impossible for big Institutional traders to buy or sell the market with size without RVOL targeting their activity. To give you an idea of just how big Institutional trader buying is, consider the following: If a single fund has \$1 billion in assets and wants just a 2% new position in the market, it must invest \$20 million. Funds are just like elephants jumping into a bathtub. They are simply so big the water rises and splashes all over the place. RVOL now enables you to easily track the Institutional elephants and identify whether the market is being bought or sold:

* When the RVOL bar is **Blue**, Institutional traders are in accumulation mode and the market goes UP...plain and simple.

* When the RVOL bar is **Red**, Institutional traders are in distribution mode and the market goes DOWN...plain and simple.

* When the RVOL bar is Gold, Institutional traders represent a neutral amount of buying and selling.

VOLUME is the only leading indicator which reveals true market intent, before it happens. All other indicators are lagged, and will tell you what has already happened. It's like driving a car using just the rear view mirror.

One of the questions many traders ask when first presented with this powerful concept is whether volume leads price, or does price lead volume? The simple answer: Volume leads price. This is why RVOL is so powerful as it tells us in advance, what the market is likely to do next. In simple terms, volume signals a price change BEFORE it happens, and this is the power of the VOLUME PRICE relationship.

The RVOL indicator is a unique algorithm which performs hundreds of complex algorithm calculations per bar and works in tandem with the Rampage Trading software to tell you where the market is going next.

There are two rules to use with the RVOL indicator before entering a new position.

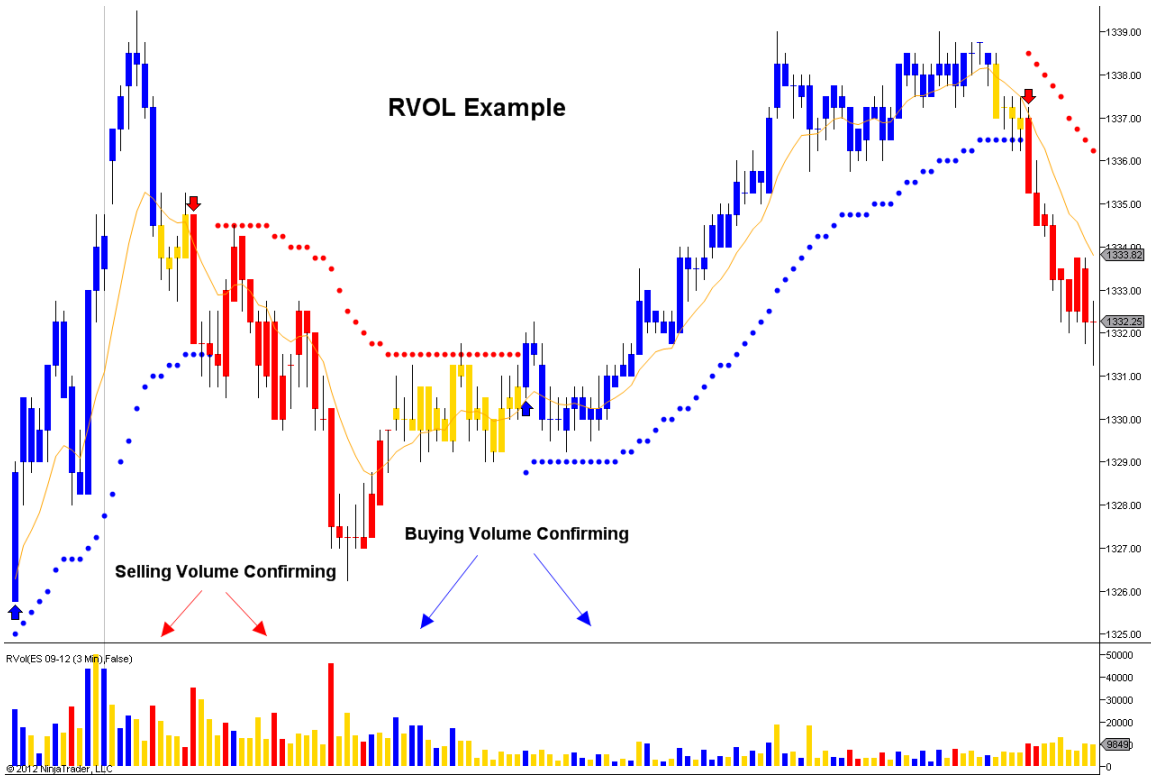
RVOL (Rampage Volume) Rules:

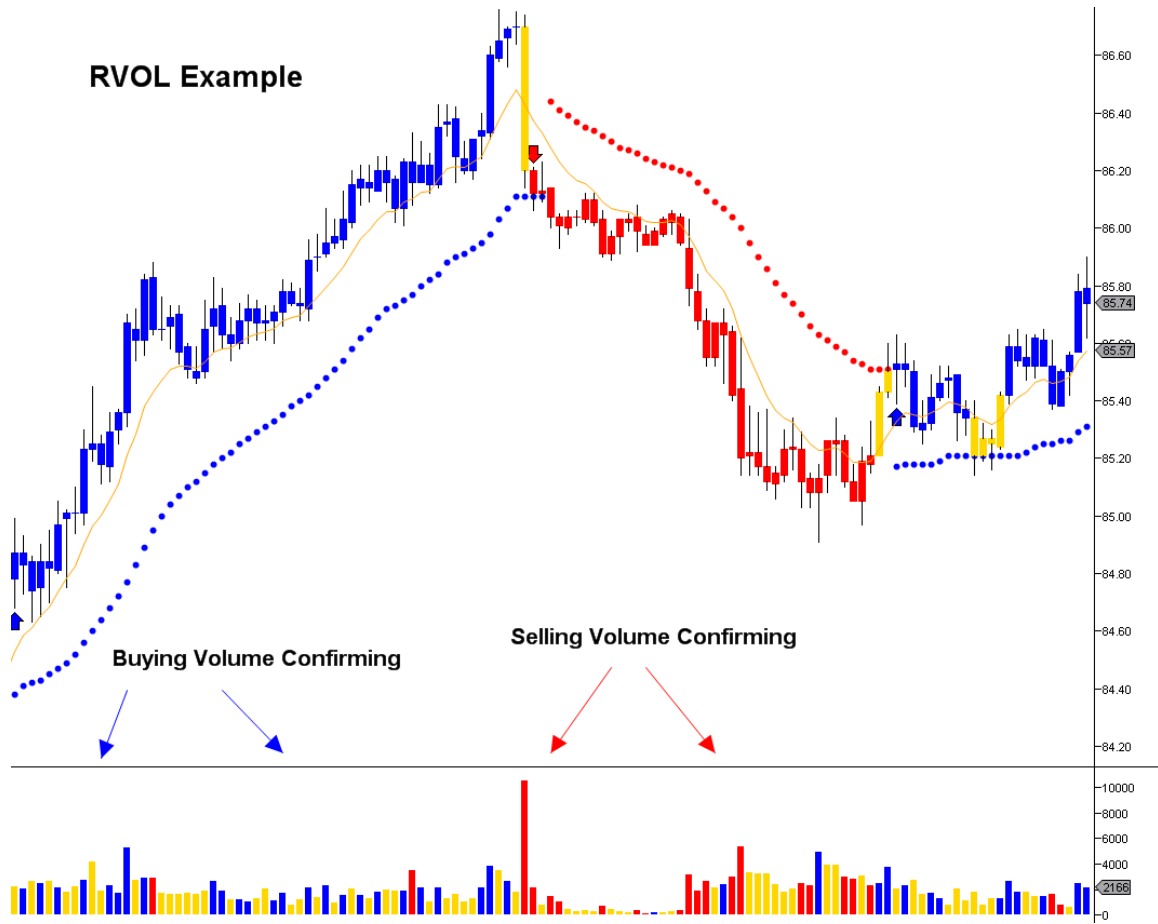
RULE ONE: Only enter a long position following a **Blue** volume bar and a short position following a **Red** volume bar provided the Rampage software is also confirming your position.

RULE TWO: The volume bar should be the same color as the Rampage software price bar. A **Blue** volume bar and a **Blue** price bar confirms a long entry while a **Red** volume bar and a **Red** price bar confirms a short entry.

There are no user inputs to this indicator.







Installing the RVOL (Rampage Volume) Indicator:

After opening your chart, you can apply the newly installed RVOL (Rampage Volume) Indicator by right-clicking the chart and selecting indicators or simply pressing the CTRL + I combination. You can find the newly installed RVOL (Rampage Volume) Indicator at the top of the indicator list in the newly opened indicators window. You will see the name “RVOL.”

Double click on the Indicator's name “RVOL” to add it to the lower left area of the Indicators window. There are no user inputs to this indicator. After finishing, click “Apply”, then “OK.”

For more information on setting up and using the RVOL (Rampage Volume) indicator, please visit our “Members” section on our website:

<http://www.rampagetrading.com/members>

Rampage Trading Alerts

Rampage Trading offers advanced alerting systems offered to our clients who wish to receive real-time RampageV7 Buy or Sell (Short) signal alerts. Rampage Trading automatically monitors and scans your selected markets, looking for signals and automatically alerts you by email or audio as soon as the RampageV7 Indicator recognizes a change in trend and generates a Buy or Sell (Short) signal for your selected time frame chart. You'll never miss a trade again.

Selecting Alerts:

Email Alerts:

You can choose to receive email alerts as soon as the RampageV7 Indicator recognizes a change in trend and generates a Buy or Sell (Short) signal for your selected time frame chart.

Email Alerts Q&A

After adding the RampageV7 indicator to my chart, how do I receive emails when a Buy or Sell (Short) signal appears?

By default, email alerts are turned off. Follow these steps to enable email alerts:

1. Select the specific time frame chart you wish to receive email alerts on.
2. Open the "Indicators" dialog box by clicking on "Indicators" in the top menu or by right-clicking the chart and selecting "Indicators." Scroll down the Indicator list and look for the RampageV7 Indicator. You will see the name "RampageV7."
3. Double click on the Indicator's name "RampageV7" to add it to the lower left area of the Indicators window. Under "Parameters" add your desired email in the email address field.
4. Click "Apply" then "OK."

Parameters	
01: Enable Sound Alert	True
02: Sound File Name	Alert4.wav
03: Email Address	xxx@xxx.com
Data	
Calculate on bar close	True
Input series	ES 12-11 (5 Min)
Maximum bars look back	TwoHundredFiftySix
Visual	
Auto scale	True
Displacement	0
Display in Data Box	False

As soon as the RampageV7 Indicator recognizes a change in trend and generates a Buy or Sell (Short) signal for your selected time frame chart, your email alert will look like this:

11/10/2011 10:01:27 AM ES 12-11 Long

Or

11/10/2011 10:02:45 AM ES 12-11 Short

In order to receive email alerts for your selected time frame chart, NinjaTrader and your selected time frame chart must be open and connected to a live datafeed.

Audio Alerts Q&A

After adding the RampageV7 Indicator to my chart, how do I enable audio alerts?

By default, audio alerts are turned on. Follow these steps to enable audio alerts:

1. Select the specific time chart you wish to receive audio alerts on.
2. Open the "Indicators" dialog box by clicking on "Indicators" in the top menu.
3. Go to "Parameters" and change "Enable Sound Alert" to "True."
4. Select your desired "Sound File Name." You may select any sound file of your choice from the dropdown list.
5. Click "Apply" then "Close."

Parameters	
01: Enable Sound Alert	True
02: Sound File Name	Alert4.wav
03: Email Address	
Data	
Calculate on bar close	True
Input series	ES 12-11 (5 Min)
Maximum bars look back	TwoHundredFiftySix
Visual	
Auto scale	True
Displacement	0
Display in Data Box	False

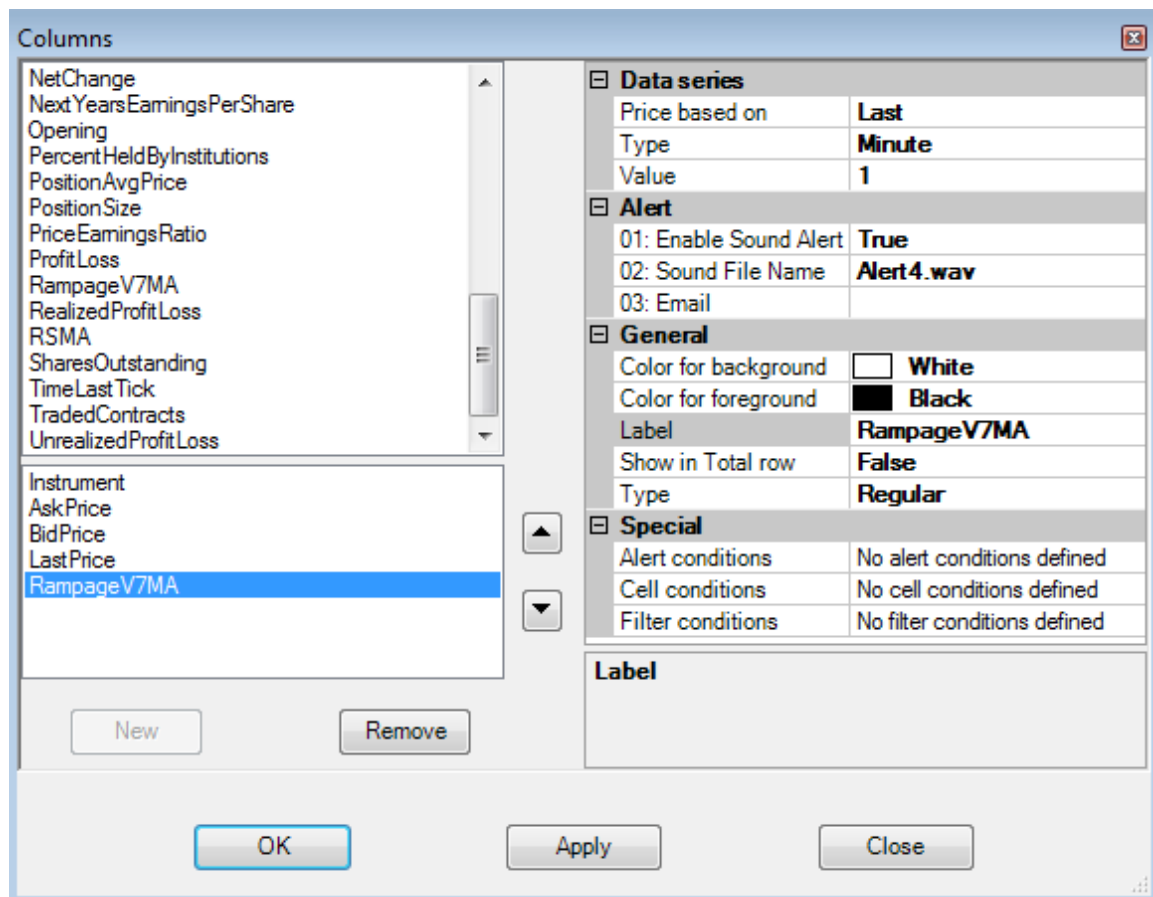
You will hear your selected audio alert as soon as the RampageV7 Indicator recognizes a change in trend and generates a Buy or Sell (Short) signal for your selected time frame chart.

Market Analyzer Q&A

How do I enable NinjaTrader Market Analyzer alerts?

Follow these steps to enable NinjaTrader Market Analyzer alerts:

1. Go to Control Center > File > New > Market Analyzer.
2. You may right-click anywhere in the Market Analyzer box and select “Add Instrument” or “Add Instrument List.”
3. Once you have completed adding your selected instruments, you may right click on the Market Analyzer box again and select “Columns.”
4. Select “RampageV7MA” then select “New” to add it to the lower left hand corner box.
5. Under “Data Series” select your desired “Type” from the dropdown list. Select your desired “Value.”
6. Under “Alert” select “True” to “Enable Sound Alert.” Select desired “Sound File Name” from the dropdown list. Input desired “Email” to receive email alerts.
7. Click “Apply” then “OK.”



For more information on setting up and using the NinjaTrader Market Analyzer, please visit www.ninjatrader.com

RS (Rampage Scalper)

Rampage Trading is excited to announce the release of our Institutional grade RS (Rampage Scalper) indicator. The RS indicator will revolutionize the trading industry forever and is already the buzz among global Institutional trading desks. Until now, this indicator was only available to our Institutional clients.

The RS indicator alone retails for thousands of dollars. However, as part of our client loyalty program, we are exclusively offering it to our retail clients FREE as part of their subscription.

What is the RS (Rampage Scalper) indicator?

The RS indicator is a standalone HFT (High Frequency Trading) program designed for short term arbitrage trading. However, it is equally effective for swing and longer term trading. The RS indicator separately tracks Algorithmic trading and Dark Pool activity and reads the tape in several different ways to identify specific reversals and will pinpoint exactly when the large Institutions are selling into the highs or buying into the lows. By separating out Algos and Dark Pool trades, the RS indicator can obtain greater insight into the character of trade flow. Many Institutional portfolios utilize Dark Pool venues so that they can utilize the increased liquidity and privacy needed to accommodate their large transactions.

In real-time, the RS indicator determines where tradable market tops or bottoms are most likely to occur with an extremely high level of accuracy. The RS indicator plots **Blue** and **Red** colored dots indicating when a market top or bottom is due. A **Blue** colored dot below price is indicative of a potential market bottom while a **Red** colored dot above price is indicative of a potential market top.

Developed by our team of former Institutional traders and Quantitative Analysts (Quants), the RS indicator is one of the most mathematically intensive algorithms we have ever released.

The RS indicator eliminates choppy or range bound markets by only exploiting ideal trading setups with a high probability of success.

The RS indicator works on all markets and all time frames. Trade Stocks, Futures, ETF's, Commodities, Forex, Bonds or any other freely traded markets.

Watch these brief videos to learn more about the RS indicator.

<http://screencast.com/t/HIPBE1qHGFbv>

<http://screencast.com/t/ZM2jViG3>

For more information on setting up and using the RS (Rampage Scalper) indicator, please visit our “Members” section on our website:

<http://www.rampagetrading.com/members>

If you are a current client, please re-download our software using your registration email and active license key. You will see the RS indicator included in the Ninja Trader indicator list.

If you are not a current client, you may subscribe to the RS indicator using the following link to take your trading to the next level.

<http://www.rampagetrading.com/purchase>

RS (Rampage Scalper) Trading Rules:

The RS indicator allows you to select from two different settings:

1. RA (Rampage Aggressive) – This setting will present frequent trading setups and is suited for the aggressive trader. The risk is, with more signals, you might be over trading. The chart might be noisy and you might get a few false signals along the way. **Please view our videos on our “Members” page for additional details.**
2. RC (Rampage Conservative) - This setting will present fewer trading setups than the RA setting along with less false signals. When the market is relatively quiet, you may not be able to find an optimal entry signal, which is not necessarily a bad thing. However, you do need to have the discipline to sit on your hands when this occurs. **Please view our videos on our “Members” page for additional details.**

What setting should you be trading with? Only you can answer that question for yourself. Each trader is different and what works for someone else may not work for you. The most important thing is to find a setting that fits YOUR personality, trading style and risk tolerance. It’s important that you feel comfortable with the setting of your choice. Pull up any chart and review past signals for each setting. If risk control is what you desire and the difference between an entry signal and exit signal is too great for your taste, try a smaller chart setting. Do so until you find a risk/reward ratio that you feel comfortable with. Please see suggested trading times/settings below.

Buy Signals:

Buy – Enter a long position upon receiving a **Blue** dot (which will be indicated under price).



Scaling Buy - If price continues to move lower after your original entry price or when the closing price is less than the previous entry price or upon receiving another Blue dot, you may enter another long position. This method is known as scaling in, which allows us to increase our position size and lower our average purchase price as the trade becomes more attractive. This rule vastly improves our odds of having a profitable trade by increasing our position size and lowering our average purchase price as the market price continues to move lower.



When using a strategy that utilizes scaling, we choose the ratio of the number of shares ahead of time so that we can plan accordingly.

Let's assume the following ratios when utilizing a scaling strategy: 1/2/3/4/5

In each case, the first number represents the initial number of shares. Each of the subsequent numbers represents the relative size of the scale-ins which may or may not occur, depending on the price action of the instrument. Let's look at a couple of examples:

In the first example, we will use 1/1 scaling. Let's assume that we purchase 300 shares of a stock for \$20/share. That's our initial position. Two days later, the price of the stock falls to \$19/share. 1/1 scaling tells us that the first scale-in (i.e. the second entry) should be the same number of shares as the initial entry, so we buy 300 more shares of the stock. Our average price per share is now: $[(300 \times \$20) + (300 \times \$19)] / 600 = \$19.50/\text{share}$. Since we decided ahead of time that we would use 1/1 scaling, we will not buy any more shares, regardless of what happens to the price of the stock.

For the second example, we will use 1/2/3/4 scaling. Let's assume that our initial position consists of 100 shares at \$30/share. The next day, the price of the stock closes at \$29/share. With 1/2/3/4 scaling, the first scale-in (second entry) should be two times the number of shares in the initial position, so we purchase an additional $100 \times 2 = 200$ shares of the stock. We now own a total of 300 shares, and our average price per share is: $[(100 \times \$30) + (200 \times \$29)] / 300 = \$29.33$. Three days later, the price drops again, to \$28/share. Our next scale-in should be three times the number of shares in the original position, so we would buy 300 shares at \$28/share. Our average price for the 600 shares that we now own is: $[(100 \times \$30) + (200 \times \$29) + (300 \times \$28)] / 600 = \28.67 . On the next day, the price rises sufficiently to trigger our exit signal, so we exit the trade without ever using the final scale-in.

There is one more aspect of scaling in to consider before we leave this topic. From a capital management perspective, it's usually best to assume that every position you take will use all available scale-in positions. For example, if your overall portfolio allocations dictate that you can invest \$5000 in each stock trade and you're using 1/1 scaling, then you know that you will have at most 2 entries (initial plus one scale in) of approximately equal size. Therefore, you should invest approximately \$2500 in the initial position. Your scale-in position will be slightly less than \$2500, because you will be purchasing the same number of shares at a lower price.

Exit long position after the appearance of the first Blue X (which will be indicated below price).

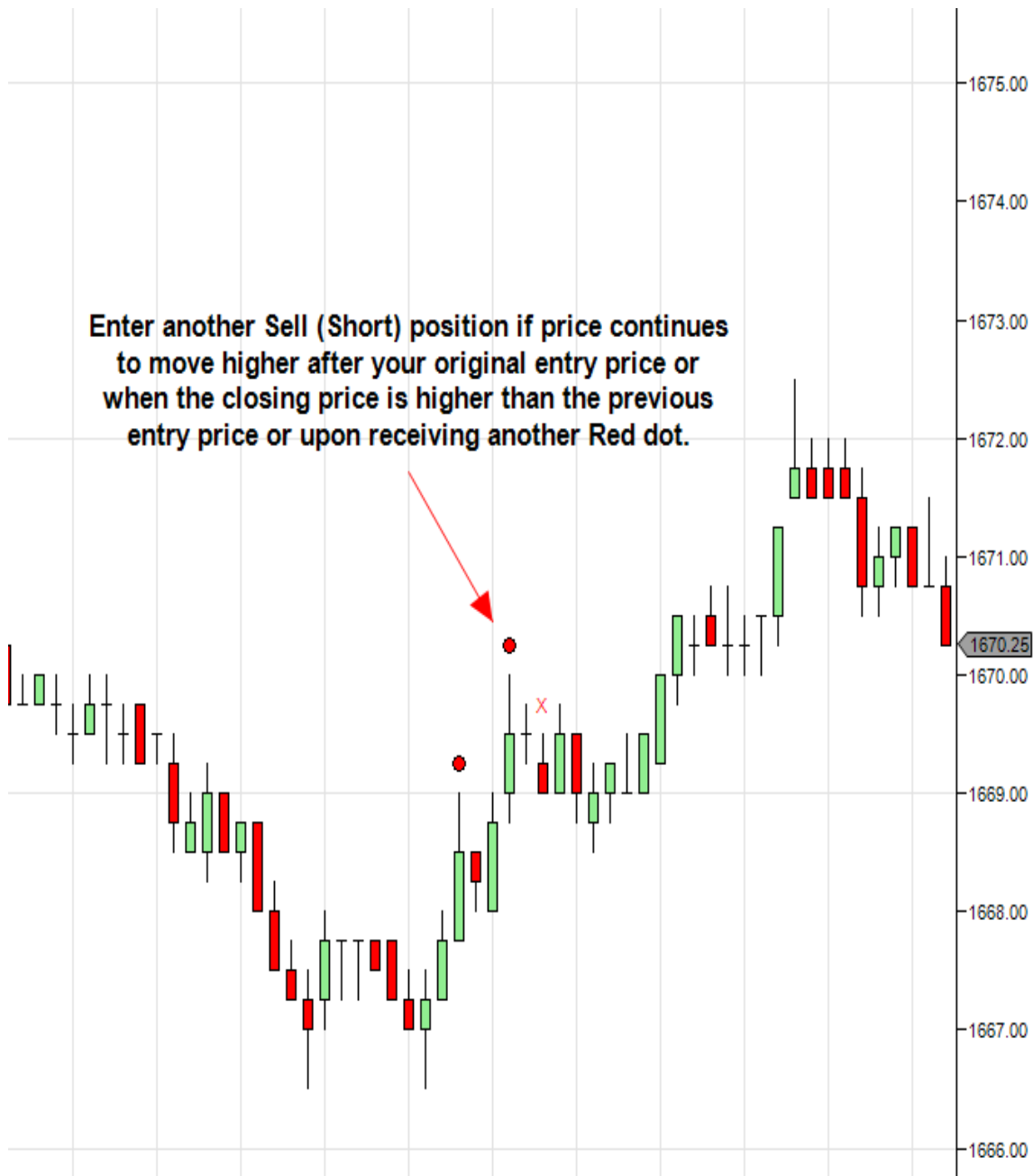


Sell Signals:

Sell – Enter a Sell (Short) position upon receiving a Red dot (which will be indicated above price).



Scaling Sell (Short) - If price continues to move higher after your original entry price or when the closing price is higher than the previous entry price or upon receiving another Red dot, you may enter another Sell (Short) position. This method is known as scaling in, which allows us to increase our position size and better our average purchase price as the trade becomes more attractive. This rule vastly improves our odds of having a profitable trade by increasing our position size and better our average purchase price as the market price continues to move higher. See ratio rules above.



Exit Sell (Short) position after the appearance of the first Red X (which will be indicated above price).



RS (Rampage Scalper) Trading Tips:

- Do not take a Buy or Sell (Short) signal on a gap up or gap down in price. We suggest waiting for the next price bar to print a Buy or Sell (Short) signal (Blue or Red dot) before initiating a position.



- The RS indicator works on all time frames. However, due to the quantitative structure and character of each markets Institutional trade flow, we suggest the following timeframes:

Suggested day trading time charts include 1, 2, 3 and 5 minute charts. A faster time frame will present frequent trading setups. Your risk will be smaller since the range of each bar is relatively small. The risk is, with more signals, you might be over trading. The chart might be noisy and you might get a few false signals along the way. Because the chart moves faster, you are also forced to make quick decisions and won't have much time to think before pulling the trigger.

Suggested swing trading and position trading time charts include Daily and Weekly charts. A slower time frame will present fewer trading setups than a faster time frame, along with less false signals. The range of each bar will be relatively larger and so is your risk. When the market is relatively quiet, you may not be able to find an optimal entry signal, which is not necessarily a bad thing. However, you do need to have the discipline to sit on your hands when this occurs. Because it takes more time to form a bar, it grants you more time to make trading decisions.

Day trading charts can be based upon several different criteria, with the most popular being time, ticks (number of trades), volume (number of contracts) and range. All these types of charts use the same market information (price, volume, etc.), but they display the information slightly differently. Again, there's no best interval for day trading. Each has advantages and disadvantages, so you should evaluate them for yourself and choose an interval that fits your personality, trading style and risk tolerance.

The RS indicator provides a well-defined exit method. Few indicators or strategies have quantified, structured, and disciplined exit rules. The RS indicator gives you the exact parameters to exit the trade which are backed by over ten years of historical test results. What we have found is that stops tend to lessen performance and in many cases they completely remove edges and our research which is backed by up to a decade of test results suggests that stops get hit often and accumulate many losses. Few trading strategies can overcome these aggregated losses. For many traders stops are a must. Psychologically it allows them to take trades, especially difficult trades. Whether you use them or not is a personal choice only you can make for yourself. We know successful traders in both camps. As we state above, pull up any chart and review past signals for each setting. If risk control is what you desire and the difference between an entry signal and exit signal is too great for your taste, try a smaller chart setting.

Installing the RS (Rampage Scalper) Indicator:

After opening your chart, you can apply the newly installed RS (Rampage Scalper) Indicator by right-clicking the chart and selecting indicators or simply pressing the CTRL + I combination. You can find the newly installed RS (Rampage Scalper) Indicator in the indicator list in the newly opened indicators window. You will see the name "RS."

Double click on the Indicator's name "RS" to add it to the lower left area of the Indicators window. There are no user inputs to this indicator. After finishing, click "Apply", then "OK."

For more information on setting up and using the RS (Rampage Scalper) Indicator, please visit our "Members" section on our website:

<http://www.rampagetrading.com/members>

Rampage Trading RS Alerts

Rampage Trading offers advanced alerting systems offered to our clients who wish to receive real-time RS Buy or Sell (Short) signal alerts. Rampage Trading automatically monitors and scans your selected markets, looking for signals and automatically alerts you by audio as soon as the RS Indicator recognizes a change in trend and generates a Buy or Sell (Short) signal for your selected time frame chart. You'll never miss a trade again.

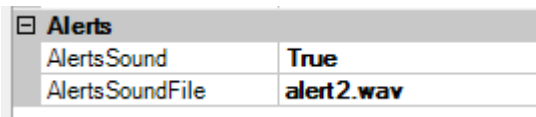
Selecting Alerts:

Audio Alerts:

After adding the RS indicator to my chart, how do I enable audio alerts?

By default, audio alerts are turned on. Follow these steps to enable audio alerts:

1. Select the specific time chart you wish to receive audio alerts on.
2. Open the "Indicators" dialog box by clicking on "Indicators" in the top menu.
3. Select the RS indicator.
4. Go to "Alerts" and change "AlertsSound" to "True."
5. Select your desired "AlertsSoundFile." You may select any sound file of your choice from the dropdown list.
6. Click "Apply" then "Close."



Alerts	
AlertsSound	True
AlertsSoundFile	alert2.wav

You will hear your selected audio alert as soon as the RS indicator recognizes a change in trend and generates a Buy or Sell (Short) signal for your selected time frame chart.

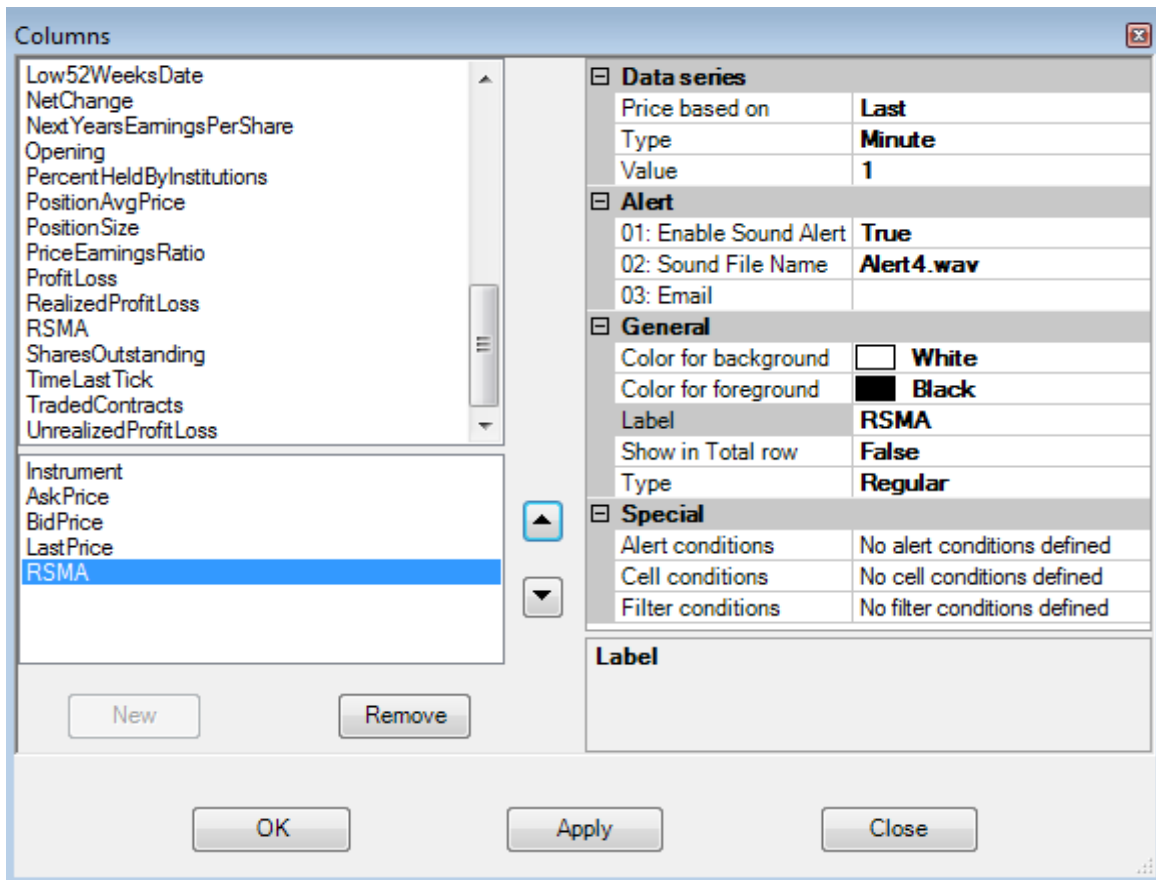
In order to receive audio alerts for your selected time frame chart, NinjaTrader and your selected time frame chart must be open and connected to a live datafeed.

Market Analyzer Q&A

How do I enable NinjaTrader Market Analyzer alerts?

Follow these steps to enable NinjaTrader Market Analyzer alerts:

1. Go to Control Center > File > New > Market Analyzer.
2. You may right-click anywhere in the Market Analyzer box and select “Add Instrument” or “Add Instrument List.”
3. Once you have completed adding your selected instruments, you may right click on the Market Analyzer box again and select “Columns.”
4. Select “RSMA” then select “New” to add it to the lower left hand corner box.
5. Under “Data Series” select your desired “Type” from the dropdown list. Select your desired “Value.”
6. Under “Alert” select “True” to “Enable Sound Alert.” Select desired “Sound File Name” from the dropdown list. Input desired “Email” to receive email alerts.
7. Under “Special” select your desired settings for the “Alert,” “Cell,” and “Filter” conditions fields.
8. Click “Apply” then “OK.”



For more information on setting up and using the NinjaTrader Market Analyzer, please visit www.ninjatrade.com

Trading Risk and Money Management

Money management is one of, if not the most critical components of any successful trading plan. Yet, it's something that many traders overlook. If you fail to properly manage your risk, your odds of making money over the long term are greatly diminished. Depending upon what type of instrument you're trading, and what trading style you have, proper money management techniques can vary quite a bit. Money management techniques can include asset allocation, stops and trailing stops, position sizing, profit taking strategies, etc. Whatever techniques you employ, the first step you need to take is to create an overall trading plan and an exit strategy for each trade. You cannot control the markets but you can control your money and your risk on each and every trade that you make. William O' Neill, founder of Investors Business Daily, has said that, "The whole secret to winning in the stock market is to lose the least amount possible when you're not right." We would agree with that!

This section is one of the most important sections you will ever read about trading. Why is it important? Well, we are in the business of making money and in order to make money we have to learn how to manage risk (potential losses). Ironically, this is one of the most overlooked areas in trading. Many traders are just anxious to get right into trading with no regard for their total account size. They simply determine how much they can stomach to lose in a single trade and hit the "trade" button. There's a term for this type of investing and it's called gambling.

When you trade without money management rules, you are in fact gambling. You are not looking at the long term return on your investment. Instead you are only looking for that "jackpot." Money management rules will not only protect you but they can make you very profitable in the long run. If you don't believe us and you think that gambling is the way to get rich, then consider this example: People go to Las Vegas all the time to gamble their money in hopes of winning a big jackpot and in fact, many people do win. So how in the world are casinos still making money if many individuals are winning jackpots? The answer is that while even though people win jackpots, in the long run, casinos are still profitable because they rake in more money from the people that don't win. That is where the term "the house always wins" comes from.

The truth is that casinos are just very rich statisticians. They know that in the long run, they will be the ones making the money, not the gamblers. Even if John Doe wins \$100,000 jackpot in a slot machine, the casinos know that there will be hundreds of other gamblers who WON'T win that jackpot and the money will go right back in their pockets. This is a classic example of how statisticians make money over gamblers. Even though both lose money, the statistician or casino in this case, knows how to control their losses. Essentially, this is how money management works. If you learn how to control your losses, you will have a

chance at being profitable. You want to be the rich statistician and not the gambler because, in the long run, you want to "always be the winner."

Capitalization

It takes money to make money. Everyone knows that, but how much does one need to get started in trading? The answer largely depends on how you are going to approach your new start-up business. You need money/capital/funds to trade. Retail brokers offer minimum account deposits as low as \$500, but that doesn't mean you should enter immediately! This is a capitalization mistake, which often leads to failure. Losses are part of the game, and you need to have enough capital to weather these losses.

So how much capital do you need? Let's be honest here, if you're consistent and you practice proper money management techniques, then you can probably start off with \$25k to \$100k in trading capital. It's common knowledge that most businesses fail due to undercapitalization, which is especially true in the trading business. So if you are unable to start with a large amount that you can afford to lose, be patient, save up and learn to trade the right way until you are financially ready.

Drawdown and Maximum Drawdown

We know that money management will make us money in the long run, but now we'd like to show you the other side of things. What would happen if you didn't use money management rules? Consider this example:

Let's say you have a \$100,000 and you lose \$50,000. What percentage of your account have you lost?

The answer is 50%.

Simple enough.

This is what traders call a drawdown. A drawdown is the reduction of one's capital after a series of losing trades. This is normally calculated by getting the difference between a relative peak in equity capital minus a relative trough. Traders normally note this drawdown as a percentage of their trading account. In trading, we are always looking for an edge. A trading system that is 70% profitable sounds like a very good edge to have. But just because your trading system is 70% profitable, does that mean for every 100 trades you make, you will win 7 out of every 10? Not necessarily! How do you know which 70 out of those 100 trades will be winners? The answer is that you don't. You could lose the first 30 trades in a row and win the remaining 70. That would still give you a 70% profitable system, but you have to ask yourself, "Would you still be in the game if you lost 30 trades in a row?" This is why money management is so important.

No matter what system you use, you will eventually have a losing streak. Even professional poker players who make their living through poker go through horrible losing streaks, and yet they still end up profitable. The reason is that the good poker players practice money management because they know that they will not win every tournament they play. Instead, they only risk a small percentage of their total bankroll so that they can survive those losing streaks. This is what you must do as a trader. Drawdown's are part of trading. The key to being a successful trader is coming up with trading plan that enables you to withstand these periods of large losses. And part of your trading plan is having risk management rules in place. Only risk a small percentage of your trading bankroll so that you can survive your losing streaks. Remember that if you practice strict money management rules, you will become the casino and in the long run, "you will always win."

In the next section, we will illustrate what happens when you use proper money management and when you don't.

Here is a little illustration that will show you the difference between risking a small percentage of your capital compared to risking a higher percentage.

Trader Risks 2% vs. 10% on Each Trade

Trade #	Total Account	2% risk on each trade	Trade #	Total Account	10% risk on each trade
1	\$20,000	\$400	1	\$20,000	\$2,000
2	\$19,600	\$392	2	\$18,000	\$1,800
3	\$19,208	\$384	3	\$16,200	\$1,620
4	\$18,824	\$376	4	\$14,580	\$1,458
5	\$18,447	\$369	5	\$13,122	\$1,312
6	\$18,078	\$362	6	\$11,810	\$1,181
7	\$17,717	\$354	7	\$10,629	\$1,063
8	\$17,363	\$347	8	\$9,566	\$957
9	\$17,015	\$340	9	\$8,609	\$861
10	\$16,675	\$333	10	\$7,748	\$775
11	\$16,341	\$327	11	\$6,974	\$697
12	\$16,015	\$320	12	\$6,276	\$628
13	\$15,694	\$314	13	\$5,649	\$565
14	\$15,380	\$308	14	\$5,084	\$508
15	\$15,073	\$301	15	\$4,575	\$458
16	\$14,771	\$295	16	\$4,118	\$412
17	\$14,476	\$290	17	\$3,706	\$371
18	\$14,186	\$284	18	\$3,335	\$334
19	\$13,903	\$278	19	\$3,002	\$300

You can see that there is a big difference between risking 2% of your account compared to risking 10% of your account on a single trade. If you happened to go through a losing streak and lost only 19 trades in a row, you would've went from starting with \$20,000 to having only \$3,002 left if you risked 10% on each trade. You would've lost over 85% of your account! If you risked only 2% you would've still had \$13,903 which is only a 30% loss of your total account.

Of course, the last thing we want to do is to lose 19 trades in a row, but even if you only lost 5 trades in a row, look at the difference between risking 2% and 10%. If you risked 2% you would still have \$18,447. If you risked 10% you would only have \$13,122. That's less than what you would've had even if you lost all 19 trades and risked only 2% of your account! The point of this illustration is that you want to setup your money management rules so that when you do have a drawdown period, you will still have enough capital to stay in the game. Can you imagine if you lost 85% of your account? You would have to make 566% on what you are left with in order to get back to break even.

Here is a chart that will illustrate what percentage you would have to make to breakeven if you were to lose a certain percentage of your account.

Loss of Capital	% Required to get back to breakeven
10%	11%
20%	25%
30%	43%
40%	67%
50%	100%
60%	150%
70%	233%
80%	400%
90%	900%

You can see that the more you lose, the harder it is to make it back to your original account size. This is all the more reason that you should do everything you can to protect your account. By now, we hope you understand that you should only risk a small percentage of your account in each trade so that you can survive your losing streaks and also to avoid a large drawdown in your account. Remember, you want to be the casino and not the gambler.

Reward-to-Risk Ratio

Another way you can increase your chances of profitability is to trade when you have the potential to make 3 times more than you are risking. If you give yourself a 3:1 reward-to-risk ratio, you have a significantly greater chance of ending up profitable in the long run. Take a look at this chart as an example:

10 Trades	Loss	Win
1	\$1,000	
2		\$3,000
3	\$1,000	
4		\$3,000
5	\$1,000	
6		\$3,000
7	\$1,000	
8		\$3,000
9	\$1,000	
10		\$3,000
Total	\$5,000	\$15,000

In this example, you can see that even if you only won 50% of your trades, you would still make a profit of \$10,000. Just remember that whenever you trade with a good risk to reward ratio, your chances of being profitable are much greater even if you have a lower win percentage.

Be the casino, not the gambler!

Remember, casinos are just very rich statisticians! Drawdown's are a reality and WILL happen to you at some point. The more you lose, the harder it is to make it back to your original account size. This is all the more reason that you should do everything you can to protect your account. We hope that you have gotten it drilled in your head that you should only risk a small percentage of your account in each trade so that you can survive your losing streaks and also to avoid a large drawdown in your account. The less you risk in a trade, the less your maximum drawdown will be. The more you lose in your account, the harder it is to make it back to breakeven. This means you should only trade only a small percentage of your account. The smaller the better.

Setting Stops

This is probably one of the most debated subjects among traders. Some traders will argue that you shouldn't use stop loss orders when trading. There are some negatives to stop orders, such as exposing yourself to being "run." If you've ever set a stop order and had the stock drop, stop you out, and then rebound in a short period of time, your were "run." Another argument against stops is that by placing the stop you are guaranteeing that, should your trade move in the wrong direction, you will end up selling at lower prices, not higher. If you are unsure about the position, then why not just bite the bullet and Sell instead of waiting for a decline to take you out of the trade? Both are valid arguments, but we still feel that most traders are better off using stop loss orders to protect themselves.

In spite of the negatives, a stop loss is important because it can prevent a small loss from becoming a disastrously large one. What's more, by diligently setting stop losses whenever you enter a trade, you end up making this important decision at the point in time when you are most objective about what is really happening with the stock. Your stops should have been set at a time when you are most objective about the possible outcomes of your trade. Once the stock starts moving, you can lose that objectivity, and make a change that you'll regret.

Position Sizing

Professional traders generally won't risk more than 1-2% of their portfolio in any given trade. So, if you have a \$1,000,000 account, and your trading plan includes a 10% stop loss on each trade, you would never put more than \$100,000 into any one position. (A 10% loss on \$100,000 is equivalent to a 1% loss on \$1,000,000). The 1% at risk benchmark can be difficult to achieve if you are a new trader with

a smaller portfolio and/or you set tighter stops, such as 3%. What most traders will do in that situation is realize that you will need to have more than 1% of your portfolio at risk on your trades, but you still need to set a reasonable percentage so that you don't end up taking a position that's larger than necessary. Also, as your portfolio grows, you should adjust your position sizing to strive for that 1% risk ceiling.

Whatever you do, don't fall into the trap of taking a larger position due to a higher level of confidence on a given trade. No matter how clearly all the signs point to huge profits, you're going to be wrong almost as often as you're right. Good discipline will allow you to survive a string of consecutive losses and still live to trade another day. Failure to employ sound money management techniques when trading will eventually lead to an empty trading account.

FAQ's

What Is Rampage Trading?

Rampage Trading utilizes cutting-edge technology by combining quantitative analysis, predictive analytics and other proprietary statistically backed formulas employed by top institutional traders and fund managers to bring you the next generation of trading software. Rampage Trading's proprietary software algorithms deliver real-time Buy and Sell (Short) signals on time-tested winning strategies. The software works on all markets, including Stocks, Futures, ETF's, Commodities, Forex, Bonds or any other freely traded markets. Rampage Trading is universal, and works with any time frame including day trading, swing trading and position trading.

What Markets Can I Trade?

Rampage Trading works in every market, with every style of trading. Perfect for day traders, swing traders and position traders. It works in any market condition – bull or bear. Rampage Trading works in any time frame as well: Daily charts, weekly charts, monthly charts, range charts, minute charts or tick charts.

How Does Rampage Trading Work?

- Pick a stock, future, forex or any liquid market that you'd like to trade. Type in the symbol.
- Choose your time horizon: Daily, weekly, monthly, range, tick, etc. Whenever you see a Buy or Sell (Short) signal, you decide whether or not you want to enter the trade.
- Can it really be this simple? Absolutely!
- Of course, there are a few finer points you'll need to learn along the way, but this is the simplicity of our software.

How Does The Software Work?

Rampage Trading targets clean, easy to see price reversal points at support and resistance levels carved out by the markets price action. Rampage Trading assists the trader in identifying trading opportunities by very clearly and graphically displaying color changes that correspond with changes in price, volume and trend. **Blue** is bullish (more buyers than sellers), **Gold** is neutral (price consolidation) and **Red** is bearish (more sellers than buyers). The price bars or candlesticks change colors to reflect these conditions. In an uptrend, there are more buyers than sellers and the price bars or candlesticks turn **Blue**. We Buy on **Blue** price bars or candlesticks. **Gold** price bars or candlesticks represent market indecision or price consolidation and no action is to be taken. In

a downtrend, there are more sellers than buyers and the price bars or candlesticks turn **Red**. We Sell (Short) on **Red** price bars or candlesticks. Our software will show you precisely where the balance of buyers and sellers begins to shift and a change of direction becomes imminent.

You may also confirm each Buy or Sell (Short) signal with our proprietary trend algorithms represented by Blue or Red colored dots above or below price. A Blue dot below price represents a confirmed uptrend. A Red dot above price represents a confirmed downtrend. If the last trend algorithm is Blue in color and you receive a Buy signal, you may take the long trade. If the last trend algorithm is Red in color and you receive a Sell (Short) signal, you may take the Sell (Short) trade. Note that you may take the trade based solely on the Buy or Sell (Short) signal you receive without using the trend algorithms. However, we recommend the Buy or Sell (Short) signal be in agreement with the last trend algorithm colored dot (Blue is bullish while Red is bearish). Values of our proprietary trend algorithms (Blue or Red colored dots above or below price) represent key support/resistance areas and are used as protection stops if the market turns against our position.

Who Are We?

Over the last decade, our team began extensive research into the area of algorithmic/automated trading with the goal of taking a successful discretionary trading strategy and making it as autonomous as possible. With the help of some of the brightest minds on Wall Street and armed with a knowledge of statistically based behavioral research, the Rampage Trading team was able to develop multi-tiered algorithms that identify significant pre-conditions in price action for preeminent stock moves. This program, based on aggregate algorithms, in combination with typical triggers for entry, risk management concepts, and proper exit techniques, surpassed expectations and led to the development of Rampage Trading.

Why Share Our Software?

- a. We will only release our product to 100 retail traders.
- b. We trade this for ourselves and we are frequently contracted by top Wall Street firms to teach our methods.
- c. Institutions, Brokers, Money Mangers, please email us for disclosure agreements.

How Can I Get Started With Rampage Trading?

If you are a current NinjaTrader user, simply go to our purchase page and follow the simple instructions to register, download and install Rampage Trading for the NinjaTrader package. Otherwise, you must first open a NinjaTrader account.

What Is Required To Use Rampage Trading For NinjaTrader?

1. The NinjaTrader software package and an active NinjaTrader account.
2. Access to real-time or historical data feed.
3. The Rampage Trading software package.

How Can I Get NinjaTrader?

To register for and download NinjaTrader, please go **HERE**:
http://www.ninjatrader.com/webnew/download_trading_software.htm

How Does Rampage Trading Help Me Decide When To Enter And Exit The Market?

Our algorithms will keep you in each trade for as long as the momentum continues in the same direction. Exits can be made at pre-selected profit targets or you can exit or reverse at the next turn. This, again, is how the software is designed to fit your personal trading style. Rampage Trading let's you see what is going on in the market "right now," so you can simplify your trading decisions.

Does Rampage Trading Work in All Markets?

Yes!

Where Can I Learn More About Rampage Trading?

Please visit our "Members" section on our website:

<http://www.rampagetrading.com/members>

What If I Have Questions Or A Problem?

Our offices are open each trading day during market hours. You can email support at any time. You will receive a response within 24 hours. Please remember that we are traders and we may have to get back to you later in the day.

Is There Technical Support Available At Rampage Trading?

Yes. The Rampage Trading team is always here to answer your e-mail questions. We want Rampage Trading to help make you the best trader you can be.

Setting up Rampage Trading for NinjaTrader Version 7:

Q. What do I need to do to get started?

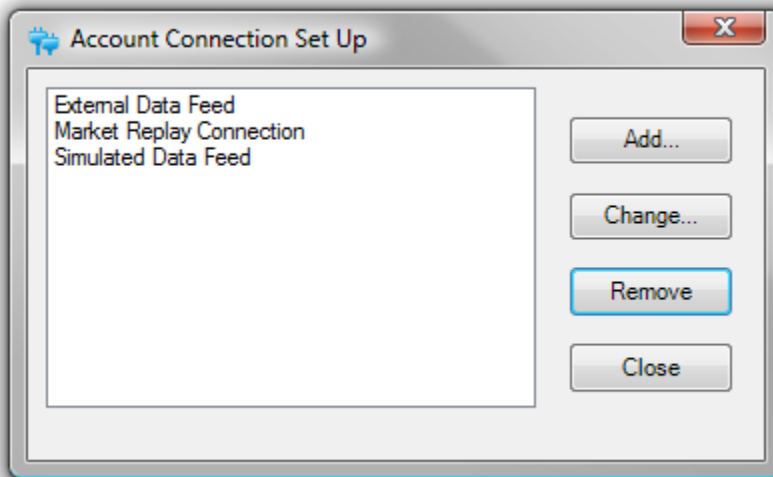
A. Download NinjaTrader which can be found here:
<http://www.ninjatrader.com/download-registration>

Once you have installed NinjaTrader, you will need a data feed. Please refer to the NinjaTrader download page to see what data feeds are supported.

<http://www.ninjatrader.com/Support#Help-Guides>

Account Connections

Within the NinjaTrader Control Center window, select the Tools menu followed by the Account Connections menu item. This will launch the Account Connection Set Up window. A connection is where you set up your user name, password and any relevant information that allows you to establish a connection to your connectivity provider which is your broker and/or data feed service.



How to create an Account Connection

Within the Account Connection Set Up window you can establish a connection, add a connection, change a connection or remove a connection. The following steps use eSignal as the connectivity provider. This provider is used for demonstration purposes.

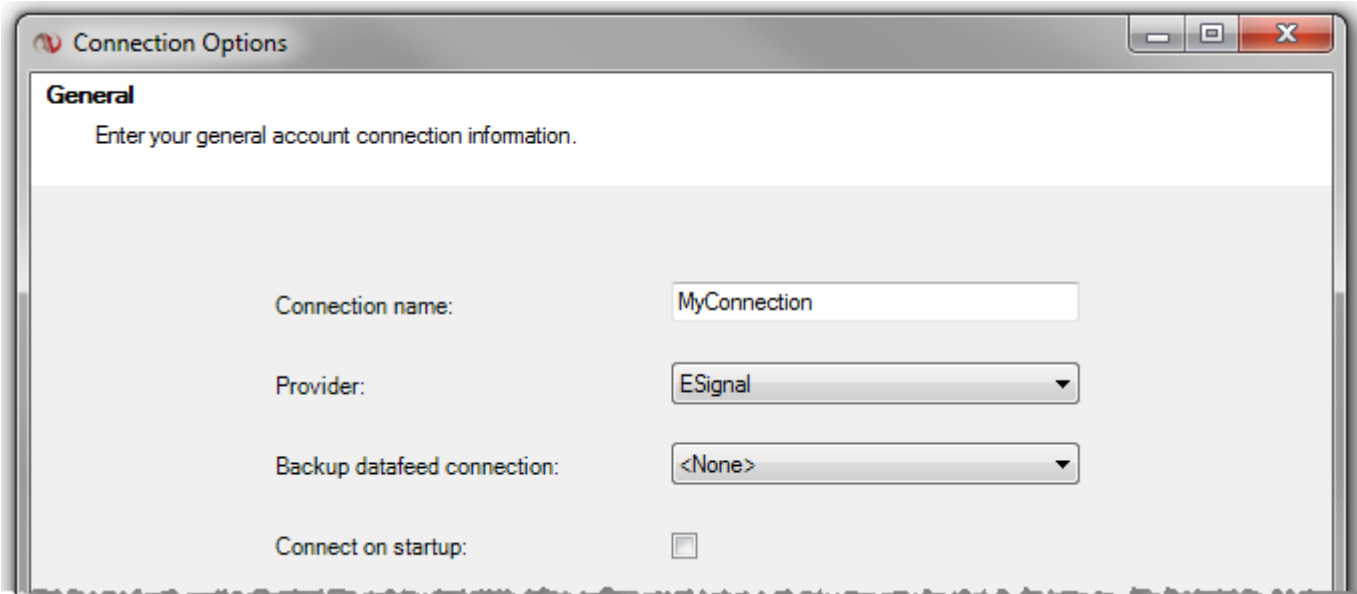
To create an Account Connection:

1. Open the Account Connection Set Up window by going to the Tools menu within the Control Center and selecting the menu item Account Connections.
2. Press the Add button to launch the connection wizard.



3. After pressing the Next button, you will be prompted to supply:

- User defined connection name (Only use alphanumeric characters in the connection name).
- Select the connectivity provider.
- Optional back up data feed connection.
- Historical Data Options (visibility of these options are dependent on the provider and your license).
- Optionally select "Connect on startup" to automatically connect to this connection when NinjaTrader is started.
- Note: Please test and ensure your connection is working as expected before using this option as it is possible to input incorrect credentials which could prevent the startup of NinjaTrader.



4. After pressing the Next button, you will be presented with provider specific parameters that you must enter in order to establish a connection. Each different provider may have different options. For specific information relative to your connectivity provider, please see the Connection Guide: <http://www.ninjatrader.com/Support.php#Help-Guides>

Connection Options

eSignal
Enter your eSignal account information.

eSignal provides different servers for different subscribed services. If you are not subscribed to a particular service, leave the server field blank. Example: If your eSignal subscription does not have "News service" then leave the "News server host:" field blank.

User Name: MyUserName Tick server host: CM*.esignal.Com

Password: ***** Daily server host: CM*.esignal.Com

Proxy (optional)

Host: Level II server host: CM*.esignal.Com

Port: 0 Int. tick server host: CM*.esignal.Com

User Name: News server host: CM*.esignal.Com

Password: Enable Tracing

< Back Next > Cancel

5. Once you have entered in all of the required connectivity information and pressed the Next button, your set up information will be presented to you at which time you must press the Finish button.



The newly created connection will be displayed in the Account Connection Set Up window and can be connected to by selecting the File menu from the Control Center then selecting the Connect menu item and left mouse clicking on the account connection you have created.

Multiple Connections

NinjaTrader supports multiple simultaneous connections to different connectivity providers and in some cases, to the same connectivity provider allowing you to:

- Connect to and trade through multiple brokers simultaneously.
- Connect to your broker and your data feed provider simultaneously.

Primary and Secondary Data Feeds

You may or may not want to use your brokers data feed as your primary data feed. For example, you may want to use eSignal as your primary data feed and your broker as back up. If this is the case, connect to eSignal first and then

establish your broker connection. Whenever you request data for a particular market, NinjaTrader will request data from the eSignal connection first and then your broker connection second if a market data request fails from eSignal. During the connection creation process, you also have the ability to assign a back up data feed connection. By doing so, you tell NinjaTrader to fail over to the back up data feed if the primary feed is disconnected. This will only work if the back up data feed connection is connected.

Connection Order is Significant

If you are establishing multiple connections that overlap in their provided market data services, the connection order you establish is critical. NinjaTrader will check for required market data services in the order your connections are established.

For example:

BrokerA - Provides real-time market and historical data.

BrokerB - Provides only real-time market data.

If you connect to BrokerA first and BrokerB second, when requesting market data NinjaTrader will request the data stream for both real-time and historical data from BrokerA even if you trade against BrokerB. It is possible you want to use the real-time market data from BrokerB (you perceive it to be faster) then you should connect to BrokerB first and BrokerA second. NinjaTrader is smart enough to realize that although it uses BrokerB for real-time data it will request historical data from BrokerA.

Before you begin the installation process, please close NinjaTrader Version 7.

Instructions:

Step 1. Download the indicator from the executable file link sent to your provided email address after purchase.

Step 2. Before you begin the installation process, please ensure that NinjaTrader Version 7 is closed. If NinjaTrader version 7 is open, the setup will not run correctly.

Step 3. After clicking on the executable file link, Select Run>Select Run Again>Select Next>Select Install>Select Finish.

Step 4. After closing the Install Wizard, you may now start NinjaTrader version 7. Connect to your datafeed via Control Center (File> Connect>Datafeed Name – Please check the NinjaTrader Version 7 online manual to create a new datafeed or connect to an existing one). Then open an empty chart via Control Center> File> New> Chart or please proceed to Step 5 if you are already a NinjaTrader Version 7 user and have your charts setup.

Step 5. After opening your chart, you can apply the newly installed RampageV7, RampageV7MTA, RVOL and RS Indicators by right-clicking the chart and selecting Indicators or simply pressing the CTRL + I combination. Scroll down the Indicator list and look for the newly installed RampageV7, RampageV7MTA, RVOL and RS Indicators. You will see the name RampageV7, RampageV7MTA, RVOL and RS.

Step 6. Double click on the Indicator's name (RampageV7), (RampageV7MTA), (RVOL) and (RS) to add it to the lower left area of the Indicators window. Please leave all settings as they are. After finishing, click "Apply" then "OK." You will now be prompted to enter a license key (which you will receive in your Rampage Trading License Activation email). This license key is unique to you and your system allowing you access to the indicator.

Step 7. Please format your chart by right clicking on your chart and selecting properties. This will bring up a new box where you can select your settings for your chart. Please visit the NinjaTrader Version 7 Help Guide for more information:

NinjaTrader Version 7 Help Guide:
<http://www.ninjatrade.com/Support>

Best Trading,

Rampage Trading