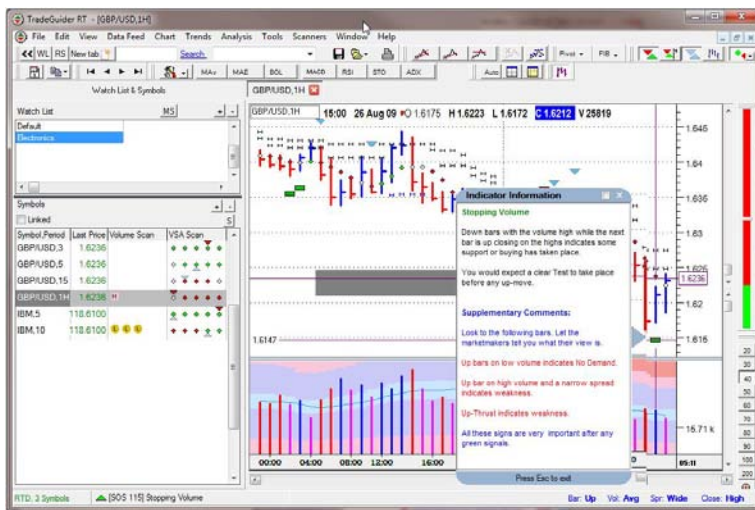




TradeGuider RT Getting Started Manual



Version 1.0

9/1/2009

CRACKED TRADING SOFTWARE

70+ DVD's FOR SALE & EXCHANGE

www.traders-software.com

www.forex-warez.com

www.trading-software-collection.com

www.tradestation-download-free.com

Contacts

andreybbrv@gmail.com

andreybbrv@yandex.ru

Skype: andreybbrv

SECTION 1

Running TradeGuider for the first time

Page 4

- Starting tradeguider
- Setting up RT Data
- Setting up EOD Data

Working with Charts

Page 6

- Chart Groups
- Displaying multiple charts
- Printing charts
- Maximizing charts
- Navigating Charts
- Chart Styles

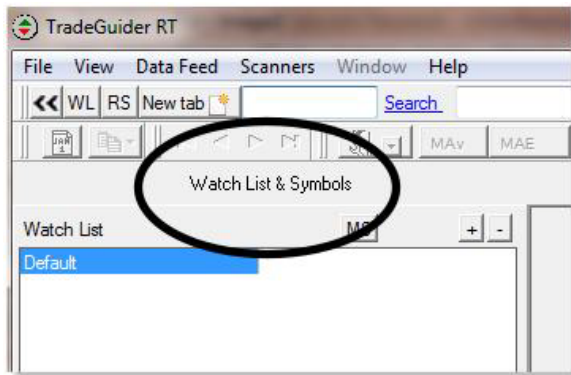
Running TradeGuider for the First Time.

Starting TradeGuider

1. Select **Start...Programs**. (In Windows Vista, select the Windows Flag icon and select All Programs).
2. Select **TradeGuider**.

Setting up RT Data

You need to start by building a watch list. To build a watch list open TradeGuider RT and you will see your watch list window



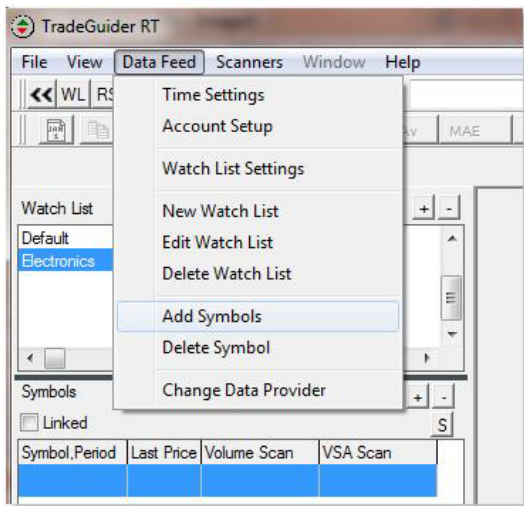
To start a new watch list click on the + button and select the "New Watch List" option.

Name your new watch list

You can select your watch list and by right clicking it edit it or delete it.

You can also add a new watch list

You can also export and import watch lists created in TradeGuider RT.



To add new symbols to your watch list

METHOD 1 – Type the Symbols in

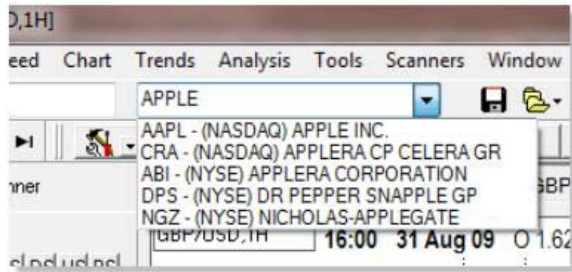
Click the Data Feed button and select the Add Symbols option

Type in the symbol you wish to add.

When you type the symbol in you can also add in the time-frames you would like to use, using a comma to separate each time frame.

For example IBM,1,5,10 would open a 1 minute, 5 minute and 10 minute IBM chart.

You can also add ,d for a daily chart and ,m for a monthly chart.



To add new symbols to your watch list

METHOD 2 –Symbol Search

Click your mouse into the search box

Type in the stock\ future\currency pairing you wish to add (for example Apple).

The program will search and provide the symbol for the instrument requested.

You can also add in the time-frames you would like to use, using a comma to separate each time frame.

For example IBM,1,5,10 would open a 1 minute, 5 minute and 10 minute IBM chart.

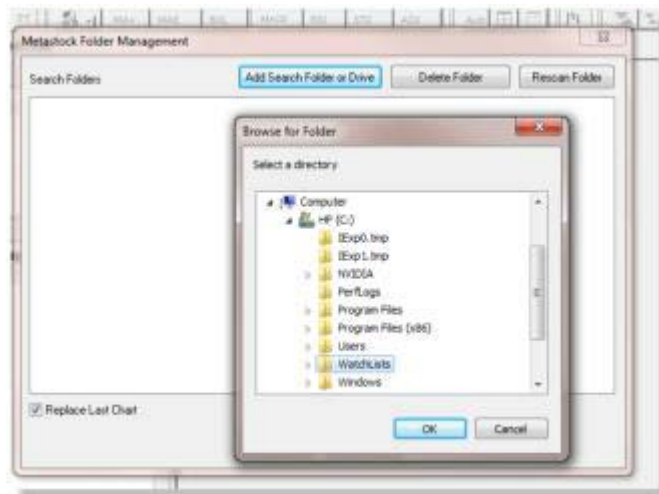
You can also add ,d for a daily chart and ,m for a monthly chart

[CLICK HERE](#) to access a comprehensive Symbol Search tool.

<https://www.realtimedata.com/ViewSymbols.aspx>

Setting up EOD Data

You need to start by adding a Metastock watch list. Open TradeGuider RT and select File on the menu and then choose the Metastock Folder Management option.



In the Metastock Folder Management dialogue box select the Add Search Folder or Drive button.

Browse to the folder where your Metastock data is stored. In the example the folder is Watchlists.

TradeGuider will then scan selected folder for Metastock data and display the file path.

*Note: The bigger the folder the longer it will take to scan for Metastock data. If you choose an entire drive this could take 30 minutes or much longer depending on the size of your drive. We recommend choosing directories that you know contain Metastock data.

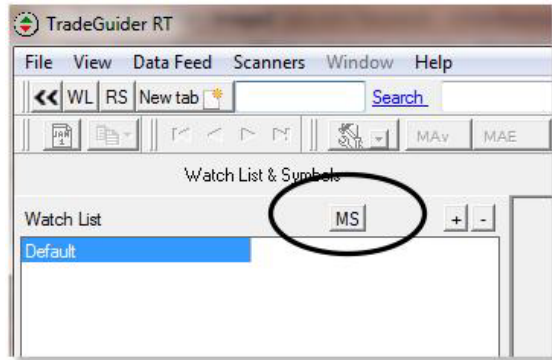
Click Ok when you are done or click Add Search Folder or Drive to add another Metastock folder.

You will now see the symbols available to you in the symbols area on the left below the watch lists.

Click on a symbol and the chart will appear in the chart area.

You can also delete, or rescan the folder if you have updated with later EOD data..

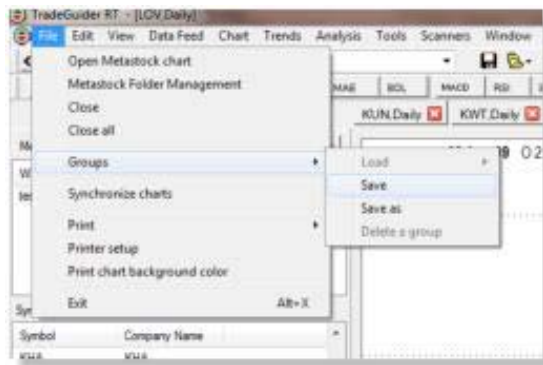
Working with Charts



To switch between real-time watch lists and Metastock EOD watch lists simply toggle between the 2 options using the MS button or the WL button at the top of the watch list.

Chart Groups

If you have multiple charts open they can be grouped together.



To do this go to the file menu, select Groups and then the Save option.

When clicked you will be asked for a name for the chart group.

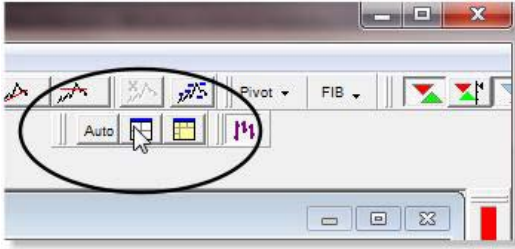
You can load this group of charts at any time by choosing the load option.

*Note: there is a limit of 16 charts that can be saved in a group.

Displaying multiple charts

If you want to bring up multiple EOD and RT charts unclick the “Replace last Chart” option at the bottom of the Metastock Folder Management Dialogue Box.

To display multiple charts open up the charts you wish to view from the chart list in your watch list area.



Go to the window toolbar and click on the tile charts button. The charts will then tile equally in the chart area. Clicking the yellow “Tile charts in a pattern” button will tile the charts vertically in the case of 2 charts, or in the case of 3 or more charts will tile the longer time-frames horizontally and the smallest time-frame vertically to emphasize it.

To synchronise multiple charts click on file and then select the “Synchronise” tab. When this is done the charts synchronise so if you put your cursor on a bar in one chart, the other charts move to that bar too.

Printing charts

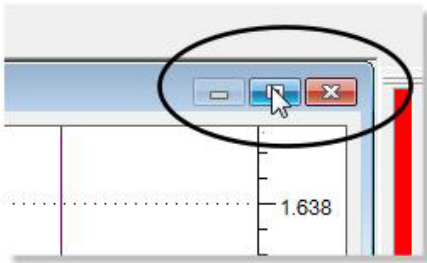
To print out a chart go to file menu and select “print”. You will be offered 2 choices:

Selecting the Chart option will get the printer to print out a selected chart

Selecting the Frame option will get the printer to print out the whole TradeGuider window

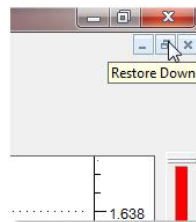
If you select the “Print Chart Background” option the printer will print out the charts using and colour background you have selected. If you do not select this setting, by default the background will be white.

Maximizing charts



To maximise a chart in the chart window, click the blue maximise button.

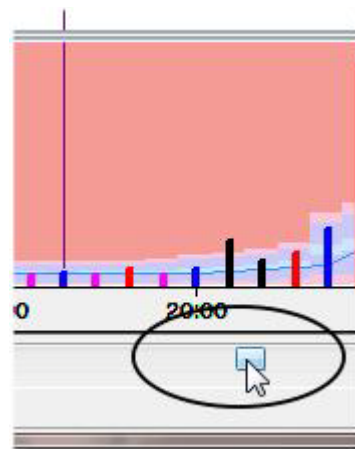
To restore down to the original window size, click the restore button.



Navigating Charts

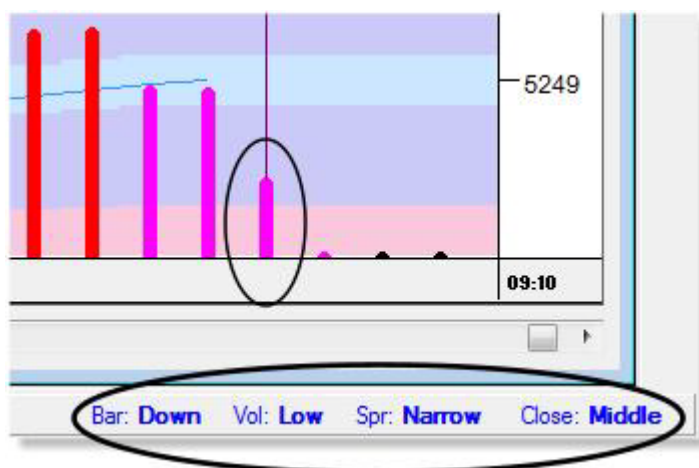
You can set how many bars are shown on the chart by selecting the number on the scale at the right hand side of the screen. The bar numbers go from 20 up to 200 or you can use the custom button looks like a magnifying glass to create charts of unique sizes or greater than 200. The maximum number of bars is 2000.

To move the chart backwards in time from the latest bars, click on the scroll bar at the bottom of the chart window. The maximum number of bars the system goes back in real-time is 2000 bars. The default number of bars is 600.



At the top of each chart you will see a series of numbers. This relates to the bar information your cursor is on. The information consists of the chart title – in this case the Pound/Dollar currency pairing, the time interval, the date, the opening price, the high and the low, then the closing price and finally the volume.

At the bottom right hand corner of the chart you will see the analysis of the volume bar and the price bar from a Volume Spread Analysis point of view.

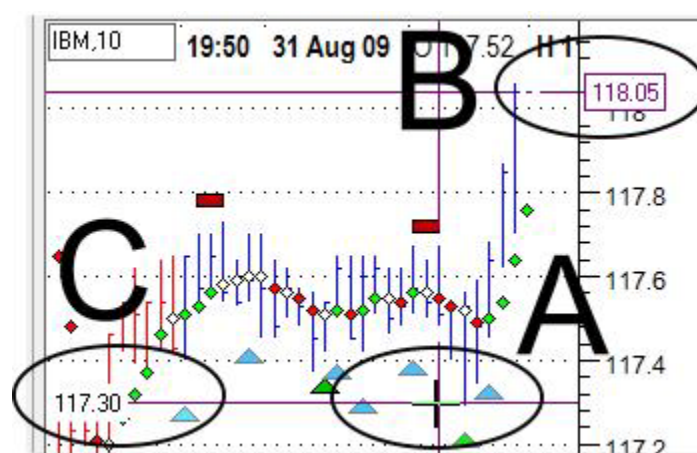


In this case the bar is a down bar, on low volume with a narrow spread which closed in the middle.

When you click your cursor in the chart area you will see a cross hatch appear (A). The vertical bar locks on to the price bar and volume bar below it.

The horizontal line at (B) is the closing price on the chart.

The horizontal line at the cross hatch is the close price/date at the cursor point (C) 117.30 on the 31st of August 2009.



To go to a specific date in a chart, Click Edit and then select “Go To Date” and type in the date and time
TradeGuider RT Getting Started Manual

you would like to go to.

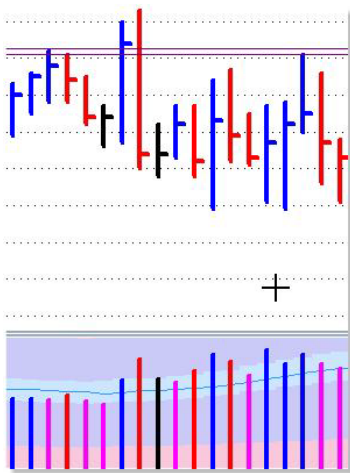


The default bar colouring consists of 3 colours.

Red indicates a bar that closes lower than the close of the previous bar

Blue indicated a bar that closes higher than the close of the previous bar.

Black indicated a bar that closed the same as the close of the previous bar.



Looking at the default colours of the volume bars there are 4 colours:

Red volume bar indicates a price bar that closes lower than the close of the previous bar

Blue volume bar indicates a price bar that closes higher than the close of the previous bar.

Black indicates a price bar that closed the same as the close of the previous bar.

Fuchsia indicates a volume bar with less volume than the previous to volume bars.

You can change the volume settings by clicking Chart on the menu and then choosing Preferences. See the section below on Chart Preferences.

Chart Styles

If you would like to change the default colours, go to the Chart tab and select the “Change Colours” feature.

This opens a dialogue box where all the items whose colour can be changed are listed.

To change the colour simply highlight the element, select a colour and click the OK button

To save your colour scheme you create a style.

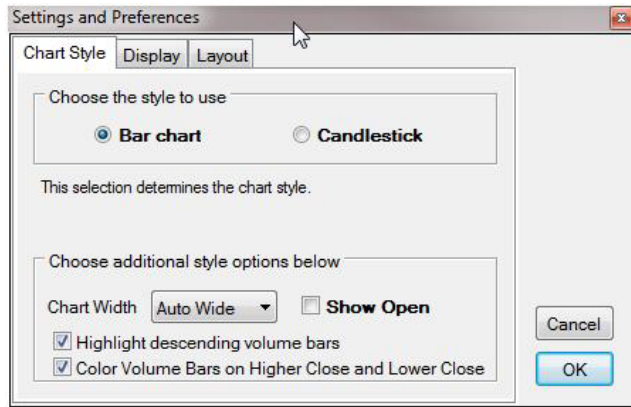
To create a style, click Charts on the menu and then choose "Save this Style".

If you want to change the current style of your chart, simply click Chart on the menu, then go to "Load Style" and click the name of the style you created.

If you want to use your style as the default style, click Chart on the menu and select "Set Default Style". Choose the style you want as default and then all new charts opened from then on will use the new default style.



To select your chart preferences go to the Charts tab and select “Preferences”



On the Chart style tab you can change the default setting to Candlestick bars.

You can also manually check the chart width. By default it is set to auto wide, which adjusts the bar width depending on the number of bars displayed and the screen resolution.

There is also the option to turn off the colour configuration of descending volume bars and the colour volume bars on higher and lower close.

If you want to display the open on each bar, click the “Show open” tick box.

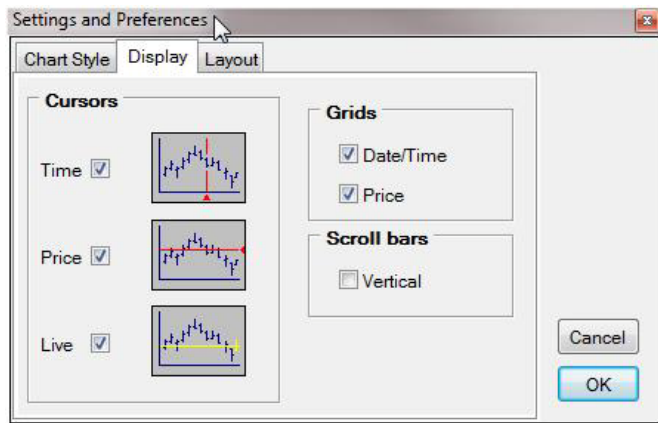
Clicking the display tab enables you to make changes to the chart annotation.

You can switch of the time line which is the vertical bar which appears wherever you click on the chart.

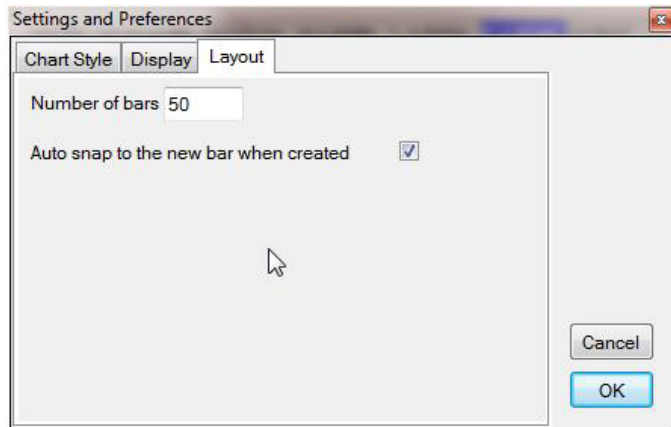
The price line is the horizontal price bar which appears when you click on the chart.

The live line is the live price at the right edge of the screen which shows the latest price.

You can switch on or off the Price and Date/Time grids.



Clicking the Scroll bar check box brings up 2 extra scroll functions at the right hand side of the chart which enables you to expand the upper and lower chart pricing ranges. This can be useful when using support and resistance lines.



Clicking the layout tab enables you to select the number of bars which appear on the screen when you load future charts.

The auto snap feature brings the chart back to the right edge every time a bar fills. So if you are looking at historical data the chart will move back to the present every time the bar fills. You can stop this snap to action by un-clicking the auto snap to feature.

This can also be achieved by clicking this icon on the program Desktop

