

TRADING SOFTWARE

FOR SALE & EXCHANGE

Trading Software 2 DVD <i>300+ items cracked trading software.</i>	\$350
TradeStation Systems DVD <i>Wealth! All tested & include screenshots. Open code. Official prices more \$200000! My recommendations and screenshots. <u>ALL for EXCHANGE also!!!</u></i>	\$590
MetaTrader Experts DVD <i>250+ Experts! Official price more \$60000! <u>FREE Decompiling EX4-MQL!</u></i>	\$490
eSignal Add-Ons CD	\$250
MetaStock DVD	\$100
Trading Books, Methods, Patters <i>Subscribe for receipt links for FREE download more 700 items!</i>	FREE
100+ Trading Video DVD's <i>Less \$3 for one DVD (DVD Video or DivX format)</i>	\$300
Full Collection	\$1490

[Subscribe](#) for receipt more information & links for FREE download.

Contacts

andreybbrv@gmail.com
andreybbrv@hotmail.com
andreybbrv@yandex.ru
Skype: andreybbrv

MLDownloader

V7.1

Copyright (C) 2000 - 2007, Trading-Tools.com
<mailto:info@trading-tools.com>

User manual

Table of contents

Table of contents	2
Welcome	3
Main Window.....	4
Portfolios/Symbol Lists	5
Creating/Editing a Portfolio.....	5
Editing a Portfolio.....	6
Creating/Editing a symbol list	6
Keeping Symbol Lists up-to-date.....	11
Data Folders.....	13
Removing duplicate Security Records	14
Download	15
Options Dialog	15
Download Options	15
Internet Connection Settings Dialog	17
Preferences Dialog.....	18
URL Properties Dialog	20
Defining a custom ASCII file format.....	21
Get Quotes Dialog	23
Displaying erroneous data/Retrying download attempts	26
Scheduling/Autodownload	28
Sorting Price Data Dialog	29
Splits/Dividends.....	30
Show Announced/Past Splits/Dividends Dialog	30
Split	31
Automatic Stock Splits and Dividends Adjustments.....	32
Tutorial	33
Downloading quotes using a symbol list.....	33
Manually filling gaps.....	33
Automatically filling missing days.....	34
Automatically Correct Open, High and Low Prices.....	34
FAQ (Frequently asked questions).....	35
Registration and Price Information	40
Upgrade	41
Order form.....	42
Contact	44
Disclaimer of Warranty	45

Welcome

MLDownloader downloads intraday, end of day and historical stock quotes, Options and Foreign Exchange (Forex) data from various Internet sites. The program gives you the option of saving your data in MetaStock™ or in the form of ASCII files. You are completely free to define your format of the ASCII files, so almost any Technical Analysis software can read it. (E.g. Excel, MetaStock, OmniTrader, VISION 2000, WallStreet, etc.)

To bring your data up-to-date simply instruct MLDownloader to perform a data collection for an individual symbol or a symbol list. With one click MLDownloader downloads, converts and passes the data to your Technical Analysis at high speed.

You can also schedule your downloads. Specify a start time and a list of download symbols, and MLDownloader automatically downloads the data. Optionally you can select an external application that will be started after the download has completed. So you can easily automate your analysis tasks.

If you have some days missed, MLDownloader automatically fills the missing days.

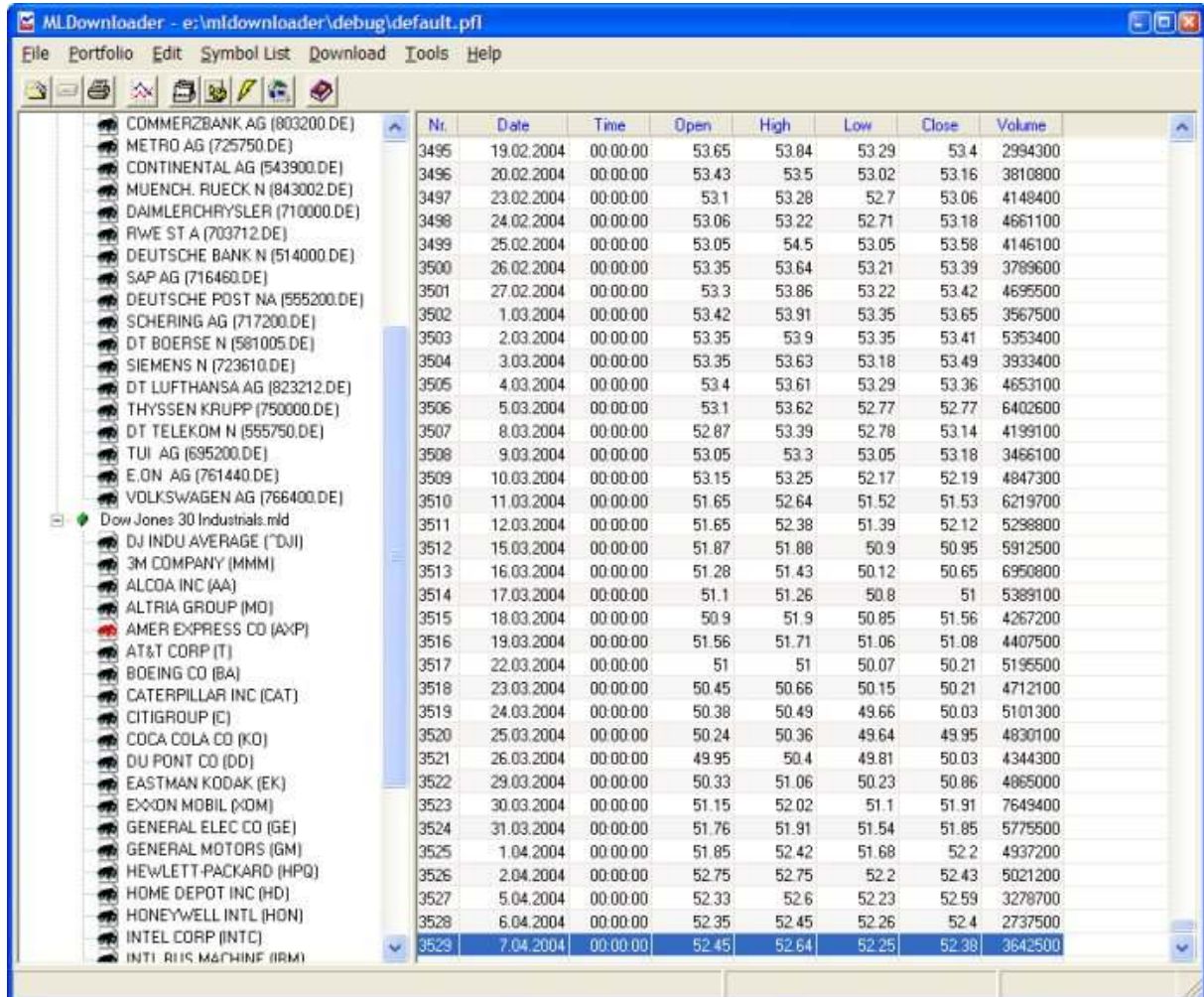
Example: If you have quotes till 10/07/2005 and you had not any chance to download quotes until 21/07/2005, all missing days will be filled automatically.

MLDownloader can download quotes from over 50 international exchanges. Furthermore, the program informs you if a component of a stock index changes. So you can be sure that your symbol lists are always up to date!

Moreover, MLDownloader informs you when a stock is announced for split. If a stock split is queued up MLDownloader will perform the split automatically. So you do not have to worry about splits anymore.

Main Window

You can display the contents of a MetaStock™ directory in the main window of MLDownloader.



The screenshot shows the MLDownloader application window. The left pane displays a list of stock symbols, including German companies like Commerzbank AG and Metro AG, and the Dow Jones 30 Industrials. The right pane displays a table of price data for the selected symbol, with columns for Nr., Date, Time, Open, High, Low, Close, and Volume.

Nr.	Date	Time	Open	High	Low	Close	Volume
3495	19.02.2004	00:00:00	53.65	53.84	53.29	53.4	2994300
3496	20.02.2004	00:00:00	53.43	53.5	53.02	53.16	3810800
3497	23.02.2004	00:00:00	53.1	53.28	52.7	53.06	4148400
3498	24.02.2004	00:00:00	53.06	53.22	52.71	53.18	4661100
3499	25.02.2004	00:00:00	53.05	54.5	53.05	53.58	4146100
3500	26.02.2004	00:00:00	53.35	53.64	53.21	53.39	3789600
3501	27.02.2004	00:00:00	53.3	53.86	53.22	53.42	4695500
3502	1.03.2004	00:00:00	53.42	53.91	53.35	53.65	3567500
3503	2.03.2004	00:00:00	53.35	53.9	53.35	53.41	5353400
3504	3.03.2004	00:00:00	53.35	53.63	53.18	53.49	3933400
3505	4.03.2004	00:00:00	53.4	53.61	53.29	53.36	4653100
3506	5.03.2004	00:00:00	53.1	53.62	52.77	52.77	6402600
3507	8.03.2004	00:00:00	52.87	53.39	52.78	53.14	4199100
3508	9.03.2004	00:00:00	53.05	53.3	53.05	53.18	3466100
3509	10.03.2004	00:00:00	53.15	53.25	52.17	52.19	4847300
3510	11.03.2004	00:00:00	51.65	52.64	51.52	51.53	6219700
3511	12.03.2004	00:00:00	51.65	52.38	51.39	52.12	5298800
3512	15.03.2004	00:00:00	51.87	51.88	50.9	50.95	5912500
3513	16.03.2004	00:00:00	51.28	51.43	50.12	50.65	6950800
3514	17.03.2004	00:00:00	51.1	51.26	50.8	51	5389100
3515	18.03.2004	00:00:00	50.9	51.9	50.85	51.56	4267200
3516	19.03.2004	00:00:00	51.56	51.71	51.06	51.08	4407500
3517	22.03.2004	00:00:00	51	51	50.07	50.21	5195500
3518	23.03.2004	00:00:00	50.45	50.66	50.15	50.21	4712100
3519	24.03.2004	00:00:00	50.38	50.49	49.66	50.03	5101300
3520	25.03.2004	00:00:00	50.24	50.36	49.64	49.95	4830100
3521	26.03.2004	00:00:00	49.95	50.4	49.81	50.03	4344300
3522	29.03.2004	00:00:00	50.33	51.06	50.23	50.86	4865000
3523	30.03.2004	00:00:00	51.15	52.02	51.1	51.91	7649400
3524	31.03.2004	00:00:00	51.76	51.91	51.54	51.85	5775500
3525	1.04.2004	00:00:00	51.85	52.42	51.68	52.2	4937200
3526	2.04.2004	00:00:00	52.75	52.75	52.2	52.43	5021200
3527	5.04.2004	00:00:00	52.33	52.6	52.23	52.59	3279700
3528	6.04.2004	00:00:00	52.35	52.45	52.26	52.4	2737500
3529	7.04.2004	00:00:00	52.45	52.64	52.25	52.38	3642500

(Main window of MLDownloader)

A description of the group or symbol list is displayed in the first pane of the status bar. During the download a progress bar will be displayed in the second pane.

In the right window you can view, edit and enter the MetaStock™ price data. A datasheet can hold up to 65,500 records (i.e., ticks, minutes, hours, days, weeks, etc.)

The data pane is similar to a spreadsheet. It is made up of individual cells in a two-dimensional matrix of columns and rows. Each column displays a data field (i.e., Date, Time, Open, High, Low, Close and Volume) and each row displays a single period's data. The "Time" column is always "0" if you are displaying EOD data.

You can scroll the data pane up and down using the vertical scroll bar on the right side of the data pane. You can scroll left and right in the data pane using the horizontal scroll bar at the bottom of the data pane. To quickly move find a date/record in the view use the Edit->Find date command.

When entering dates in the data pane, you must use the date format you have specified in the Windows Control Panel. (Regional Settings)

Press the "F5" key or click on "Download->Update view" to update **all symbol lists** that are displayed in the main window. If you want to download **only a single symbol list**, select the list and click on "Download->Get Quotes".

Portfolios/Symbol Lists

Creating/Editing a Portfolio

A portfolio is a collection of one or more symbol lists. So you can easily group your symbol lists after certain criterions. (E.g. country)

Steps to create a new portfolio

Click on "File->New". Now the left pane is empty.

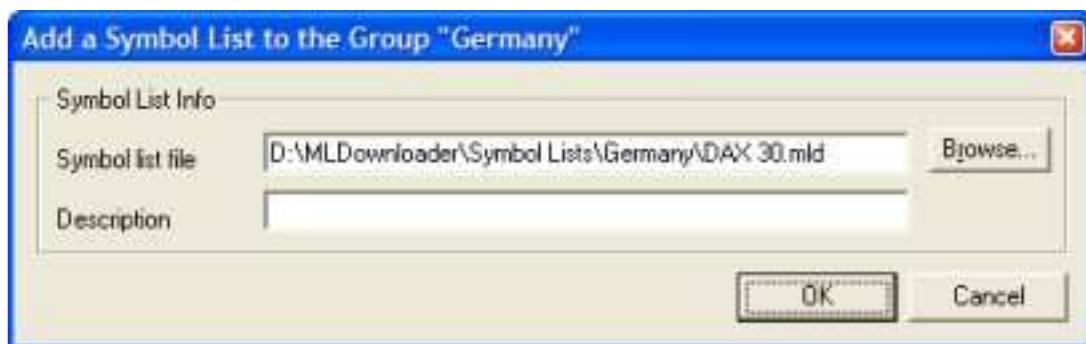
To add a new group, click on "Portfolio->Add group". The dialog shown below will appear.



("Add New Group" dialog)

Type in the desired group name and click OK. Optionally you can enter a description of the group.

Now you are able to add a symbol list file to the group. Select the group name and click on "Portfolio->Add Symbol List". The dialog shown below will appear.



("Add Symbol List" dialog)

Select one or more symbol lists by using the "Browse..." button. Optionally you can enter a description of the symbol list. If you select more than one list the description will be the same for all symbol lists. Click on "OK" to add the symbol list to the selected group.

To save the groups/symbol lists of the portfolio, click on "File->Save". To download the newest data of the portfolio, click on "Download->Update view" or press the F5 key.

Note: Symbol lists of the most important stock exchanges are stored in the "C:\Program Files\MLDownloader\Symbol Lists" directory.

Editing a Portfolio

Click on "File->Open" and select the portfolio list you want to edit. The portfolio will be displayed in the main window. Select the group/symbol list you want to edit, and click on "Portfolio->Edit". (Or press the F2 key) An "Edit" dialog that is similar to the "Add" dialog will appear. Make your changes and click on OK. To save the changes of the portfolio, click on "File->Save".

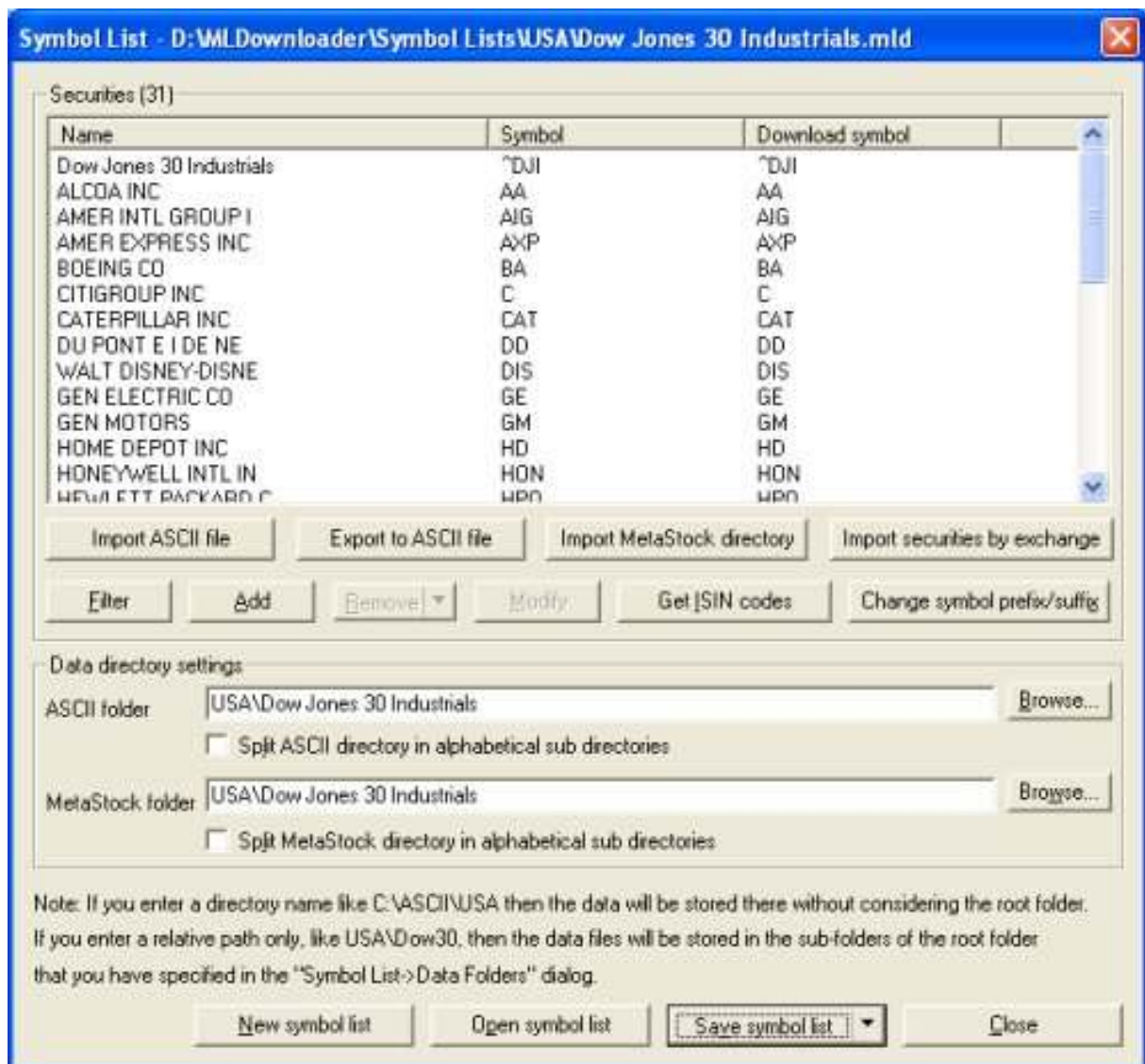
Creating/Editing a symbol list

A symbol list contains following information:

- Security information: Company name, symbol and download symbol (The download symbol can differ from the different download servers)
- A directory where the downloaded data can be stored. (MetaStock and ASCII directory)
- Server from where the intraday snapshot data will be downloaded.

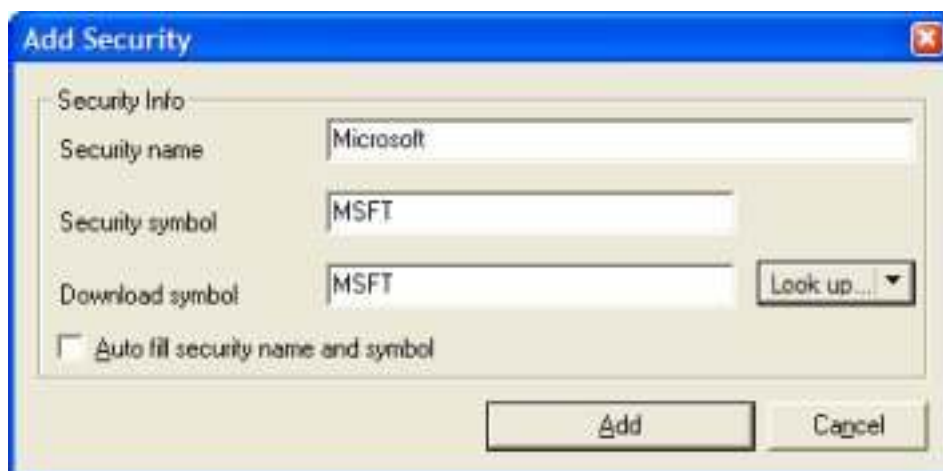
All securities of a symbol list will be downloaded at the same time. The data of all securities will be stored in the same directory.

To create/edit a symbol list, click on "Symbol List->Edit". The dialog shown below will appear.



("Symbol List" dialog)

Double click on a security to modify it, or click on the "Add" button to add a new security.



("Add Security" dialog)

Enter a name, symbol and a download symbol. The "Security symbol" is used to identify a security in a MetaStock directory. In most cases this symbol is identical to the download symbol.

The download symbol is needed to identify the security on the server. If you do not know the symbol name click on the "Look up" button and you will be directed to the Yahoo security symbol look up site. You can add as many securities as you want. However the less securities you have in a symbol list the better is the performance. It is recommended that you do not have more than 300 securities in a symbol list.

Note: If you select the "Auto fill" option the "Security name" and "Security symbol" fields will be filled in with the same values that you enter in the "Download symbol" field.

You can look up download symbols at:

Yahoo: <http://finance.yahoo.com/>

Quote.com: http://finance.lycos.com/home/misc/symbol_search.asp

MSN: <http://moneycentral.msn.com/investor/common/find.asp>

Directory

You have to specify a directory where the MetaStock or ASCII files can be stored. Click on the "Browse" button to select a directory. You can also enter a directory manually.

Note: If you enter a directory name like C:\ASCII\USA then the data will be stored there without considering the root folder. If you enter a relative path only, like USA\Dow30, then the data files will be stored in the sub-folders of the root folder that you have specified in the Symbol List->Data Folders dialog.

If you are entering a relative path only, then you can change the storage location of all symbols easily. If you are sure that you do not want to change the storage location in the future then you can also enter an absolute path like C:\ASCII\USA.

Split in alphabetical sub directories

Select this option if you want to store all securities in a directory starting with their first letter. The directory you enter in the MetaStock or ASCII directory text box is the root directory.

Example:

If you have entered "C:\MetaStock" in the "MetaStock directory" text box and select this option the security "Microsoft" will be stored in the "C:\MetaStock\M" directory. IBM will be stored in "C:\MetaStock\I" directory and so on.

Import ASCII file

You can import any ASCII files containing security names and security symbol codes. So you can easily add a lot of securities without manually typing it. Following dialog will appear if you click on the "Import ASCII file" button:



("Import ASCII File" dialog)

In this dialog you have to enter the column where the name/symbol can be found. Furthermore, you have to specify a character that would be used as the field delimiter. Enter "T" in the "Column separator" field if the columns are separated by a tabulator. Finally, you have to select the ASCII file containing the name/symbols.

If the ASCII file looks like the following you have to use the settings that are shown on the screenshot.

Microsoft, MSFT
Intel, INTC

Export to ASCII file

You can export a symbol list to an ASCII file containing only the name/symbol. Following dialog will appear if you click on the "Export to ASCII file" button:



("Export Symbol List to ASCII file" dialog)

First, you have to enter a name of the ASCII file. Click on the "..." button to browse for a file. Finally, you have to enter a column separator. Enter "T" if you want to separate the columns with a tabulator.

If you use the settings from the above screenshot an ASCII file like following will be created:

Microsoft, MSFT
Intel, INTC

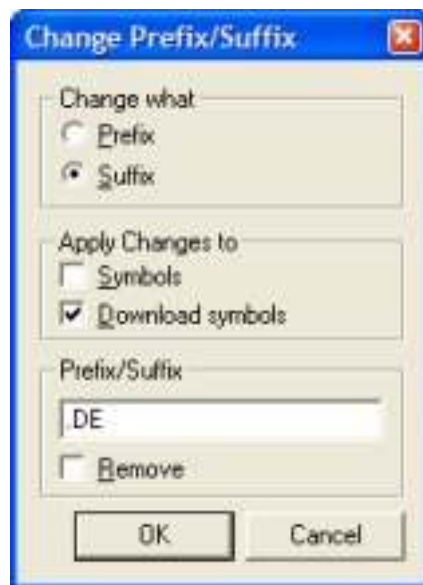
Importing MetaStock™ files

Click on the "Import MetaStock directory" button to import all securities of a MetaStock™ directory. A dialog will be displayed where you can select the directory. All securities of this directory will be displayed in the "Symbol List" dialog automatically.

For non US/Canadian securities it is required to add a suffix to the download symbol. You can do this by clicking on the "Change symbol prefix/suffix" button. If you have imported German securities, you have to add the suffix ".DE", for French securities the suffix ".PA" etc.

Changing symbol prefix/suffix

Click on the "Change symbol prefix/suffix" button to change the prefix/suffix of the symbols and download symbols.

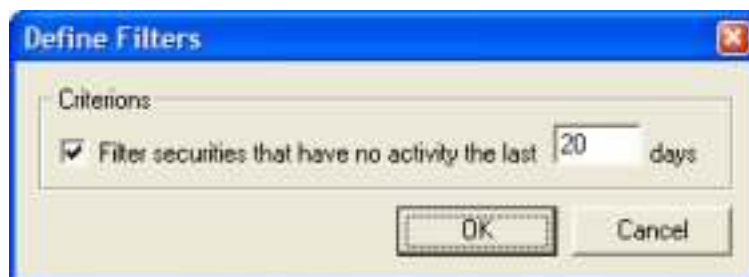


("Change Prefix/Suffix" dialog)

The prefix/suffix will be added to all symbols that are displayed in the "Symbol List" dialog. To remove a prefix/suffix you have to select the "Remove" checkbox.

Filter Securities

Click on the "Filter" button to display the "Define Filters" dialog.



("Define Filters" dialog)

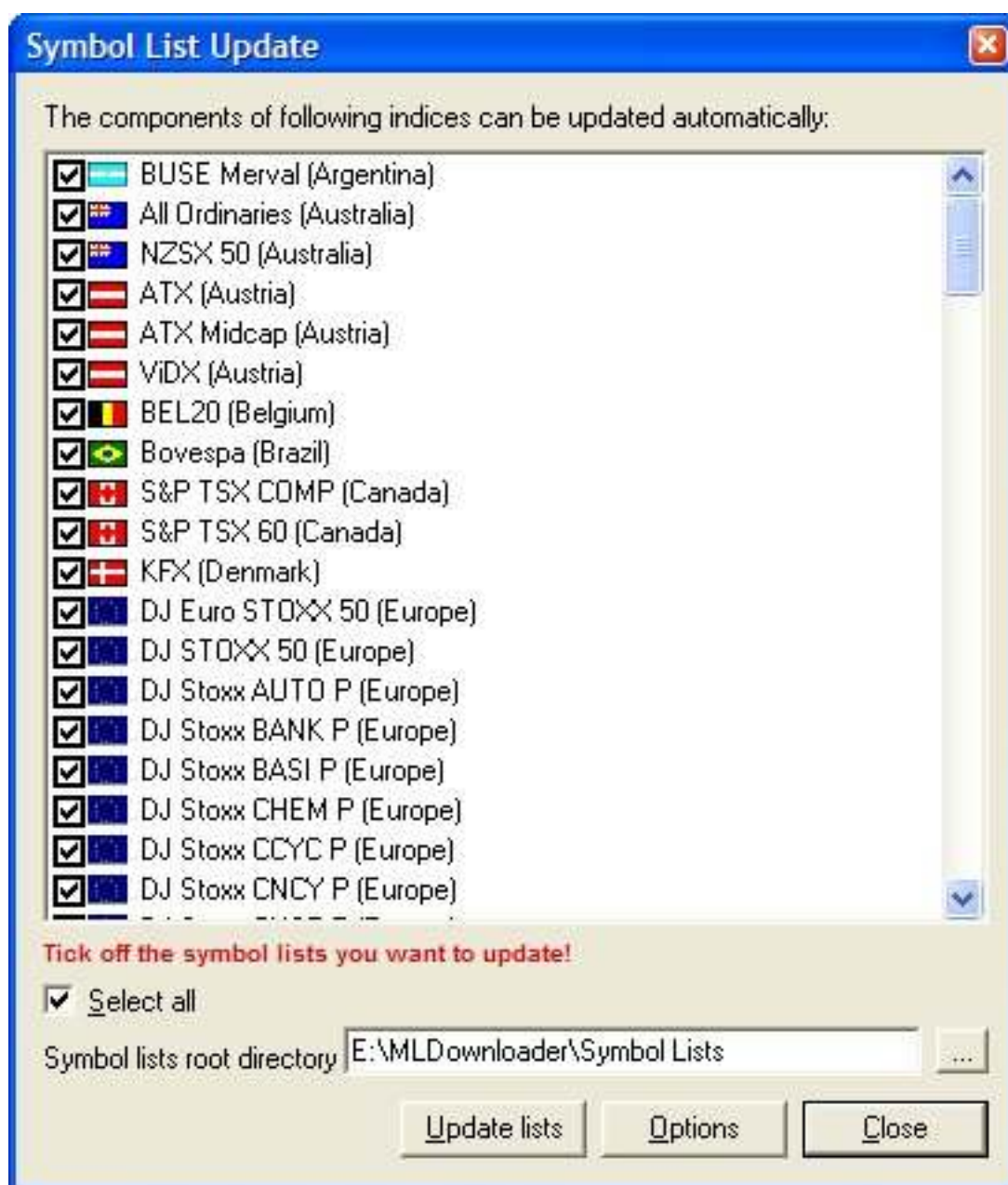
You can filter all securities that had no activity the last xx days. After you have clicked "OK" all securities with no activity will be selected in the "Symbol List" dialog. Use the "Delete" button to delete the securities from the symbol list and from the MetaStock directory.

Keeping Symbol Lists up-to-date

MLDownloader can download the components of following indices:

BUSE Merval (Argentina)	DJ E.StoxxCNCY P (Europe)	Oslo All Share (Norway)
All Ordinaries (Australia)	DJ E.StoxxCNST P (Europe)	Oslo Obx (Norway)
NZSX 40 (Australia)	DJ E.StoxxENGY P (Europe)	PSI20 (Portugal)
ATX (Austria)	DJ E.StoxxFINS P (Europe)	Straits Time (Singapore)
ATX Midcap (Austria)	DJ E.StoxxF&BV P (Europe)	BT-SRI (Singapore)
ViDX (Austria)	DJ E.StoxxIND P (Europe)	UOB Sesdaq (Singapore)
BEL20 (Belgium)	DJ E.StoxxINSU P (Europe)	KLSE Composite
Bovespa (Brazil)	DJ E.StoxxMDIA P (Europe)	(Singapore)
S&P TSX COMP (Canada)	DJ E.StoxxHEAL P (Europe)	Madrid General (Spain)
KFX (Denmark)	DJ E.StoxxRETL P (Europe)	IBEX 35 (Spain)
KVX (Denmark)	DJ E.StoxxTECH P (Europe)	SAX All Share (Sweden)
SX All Share PI (Denmark)	DJ E.StoxxTCOM P (Europe)	OMX (Sweden)
DJ Euro STOXX 50 (Europe)	DJ E.StoxxUTIL P (Europe)	SMI (Switzerland)
DJ Stoxx AUTO P (Europe)	CAC 40 (France)	SPI General (Switzerland)
DJ Stoxx BANK P (Europe)	NM-FR Price (France)	SNMI (Switzerland)
DJ Stoxx BASI P (Europe)	SBF 120 (France)	FTSE 100 (United Kingdom)
DJ Stoxx CHEM P (Europe)	DAX 30 (Germany)	FTSE 250 (United Kingdom)
DJ Stoxx CCYC P (Europe)	TecDAX (Germany)	FTSE AIM (United Kingdom)
DJ Stoxx CNCY P (Europe)	SDAX (Germany)	FTSE TECHMARK (United
DJ Stoxx CNST P (Europe)	MDAX (Germany)	Kingdom)
DJ Stoxx ENGY P (Europe)	Midcap Market (Germany)	Dow Jones 30 Industrials
DJ Stoxx FINS P (Europe)	Prime All Share (Germany)	(USA)
DJ Stoxx F&BV P (Europe)	Technology All Share	Dow Jones 20
DJ Stoxx IND P (Europe)	(Germany)	Transportation (USA)
DJ Stoxx INSU P (Europe)	Classic All Share (Germany)	Dow Jones 15 Utilities
DJ Stoxx MDIA P (Europe)	Hang Seng (Hong Kong)	(USA)
DJ Stoxx HEAL P (Europe)	Irish SE (Ireland)	Dow Jones 65 Composite
DJ Stoxx RETL P (Europe)	BSE Sensex (India)	(USA)
DJ Stoxx TECH P (Europe)	S&P CNX Nifty (India)	Nasdaq 100 (USA)
DJ Stoxx TCOM P (Europe)	MIB 30 (Italy)	S&P 500 (USA)
DJ Stoxx UTIL P (Europe)	Mibtel (Italy)	S&P 100 (USA)
DJ E.StoxxAUTO P (Europe)	Numtel (Italy)	S&P 400 MidCap (USA)
DJ E.StoxxBANK P (Europe)	Midex (Italy)	S&P 600 SmallCap (USA)
DJ E.StoxxBASI P (Europe)	MXSE IPC GRAL (Mexico)	
DJ E.StoxxCHEM P (Europe)	AEX Components	
DJ E.StoxxCCYC P (Europe)	(Netherlands)	
	AMX Components	
	(Netherlands)	

Clicking on the "Symbol List->Update" menu causes the following dialog to be displayed:



("Symbol List Update" dialog)

Select the symbol lists you want to update. Also make sure that the root directory is correct. This directory should point to the symbol lists you want to update.

Note: Do not change the names of the default symbol lists of MLDownloader. If you change the names, the program cannot update the symbol lists.

Click on "Update lists" to check if the components of some indices have changed. MLDownloader will automatically remove old securities and will download historical data for new securities (optional).

Command Line

You can also start the "Symbol List Update" dialog from the command line using following syntax:

```
C:\MLDownloader\MLDownloader.exe -UpdateSL
```

The program will be closed automatically after the symbol lists were updated successfully.

Clicking on the "Options" button causes following dialog to be displayed:



("Symbol List Update Options" dialog)

Manually confirm changes

Tick off this option if you want that you will be asked for each change that will be made on the symbol list.

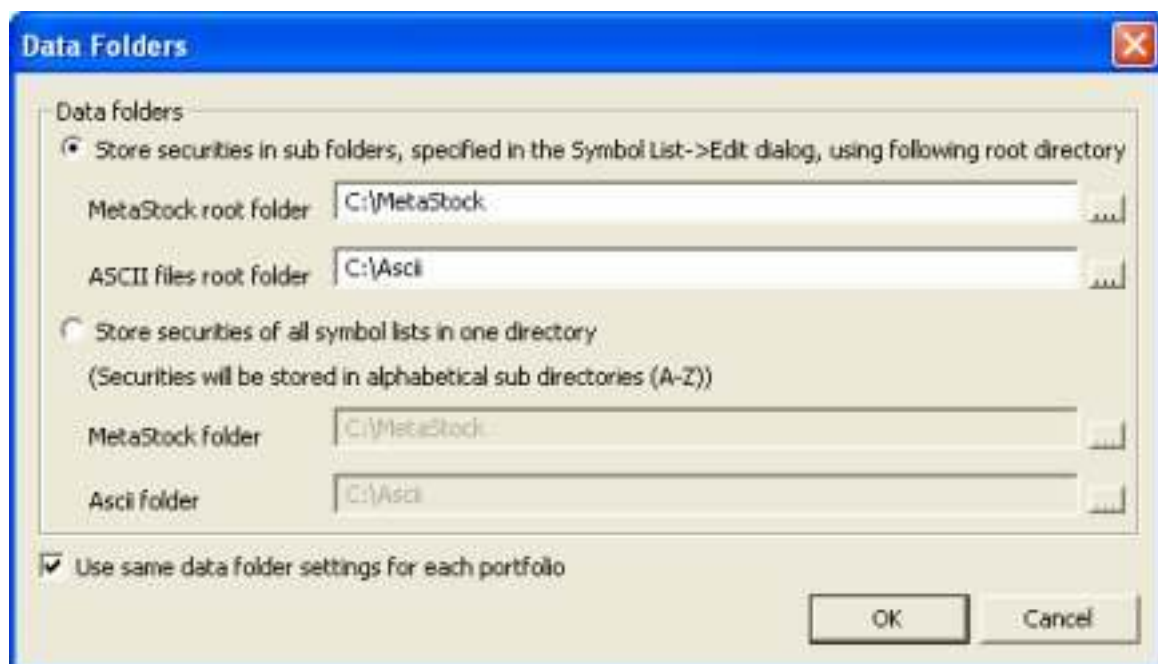
Store deleted securities in following directory

You can define a directory where the stocks that were removed from a symbol list are stored.

Data Folders

By default all quotes will be stored in the folders "C:\MetaStock\Country\Index Name" or "C:\Ascii\Country\Index Name". It would be very troublesome and time-consuming if you want to change the folder of all symbol lists. (e.g. "C:\Ascii\USA\Dow30" to "E:\My Stocks\USA\Dow30")

In the Symbol List->Data Folders you are able to specify a root folder where the data of all symbol lists will be stored. Furthermore, you are also able to choose whether to store the data files in sub folders of the root folder, or store the data in one directory that contains alphabetical sub directories (A-Z).



("Data Folders" dialog)

Example:

Supposing that you have a symbol list where the name of the MetaStock folder is USA\Dow30. Whenever you download data and are using the "Store securities in sub folders..." option, the data will be stored in the "C:\MetaStock\USA\Dow30" folder. If you change the MetaStock root folder to "E:\My Stocks" and start the download again then the data will be stored in the "E:\My Stocks\USA\Dow30" folder. If you have a symbol list containing an full folder name like "C:\MetaStock\USA\Nasdaq100" then data will be stored in this folder without considering the MetaStock root folder.

The program will store all the data files in sub directories (A-Z) if you tick off the "Store securities of all symbol lists in one directory" option.

Use same data folder settings for each portfolio

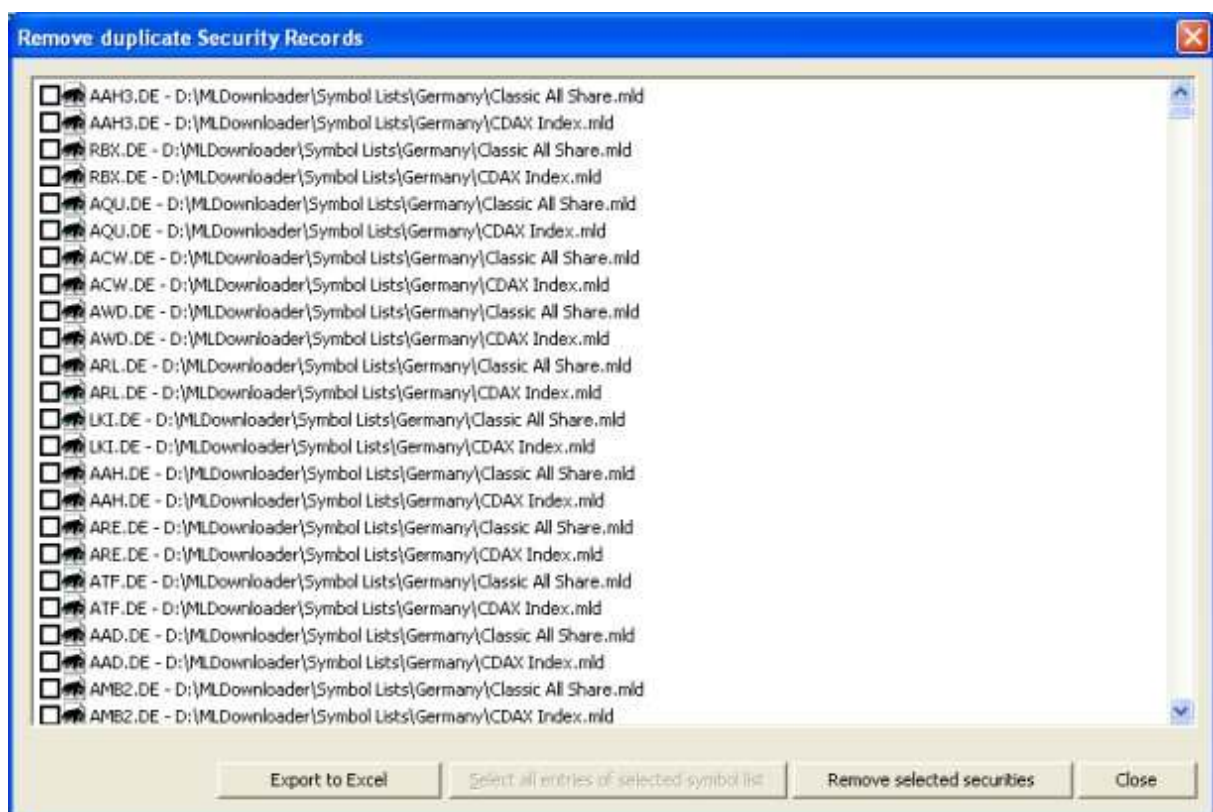
Tick off this option to use the same data folder settings for all portfolios that you will create in the future. If you do not use this option then you are able to create portfolios containing different root folders.

Important update information for users that are using version 7.0 or lower

The symbol lists that were used in MLDownloader 7.0 or lower have all full folder names like "C:\MetaStock\USA\Dow30". Therefore the MetaStock root folder cannot be used. To solve this program you have to download the new symbol lists on <http://www.trading-tools.com/downloads/symbollists71.zip> and replace them with the symbol lists on your computer. Alternatively, you can also uninstall MLDownloader completely and re-download the program from <http://www.trading-tools.com/downloads/mldownloader.zip>

Removing duplicate Security Records

MLDownloader scans your portfolio and searches for duplicate securities. To start the scan, click on "Portfolio->Search for duplicate Securities". Following dialog will be displayed after the scan:



("Remove duplicate Security Records" dialog)

All duplicate securities and the symbol list containing the securities will be displayed. Select the securities (press the "Ctrl" key to select more securities at the same time) you want to remove and then click on the "Remove selected securities" button. The securities will be removed from the symbol list and from the MetaStock directory.

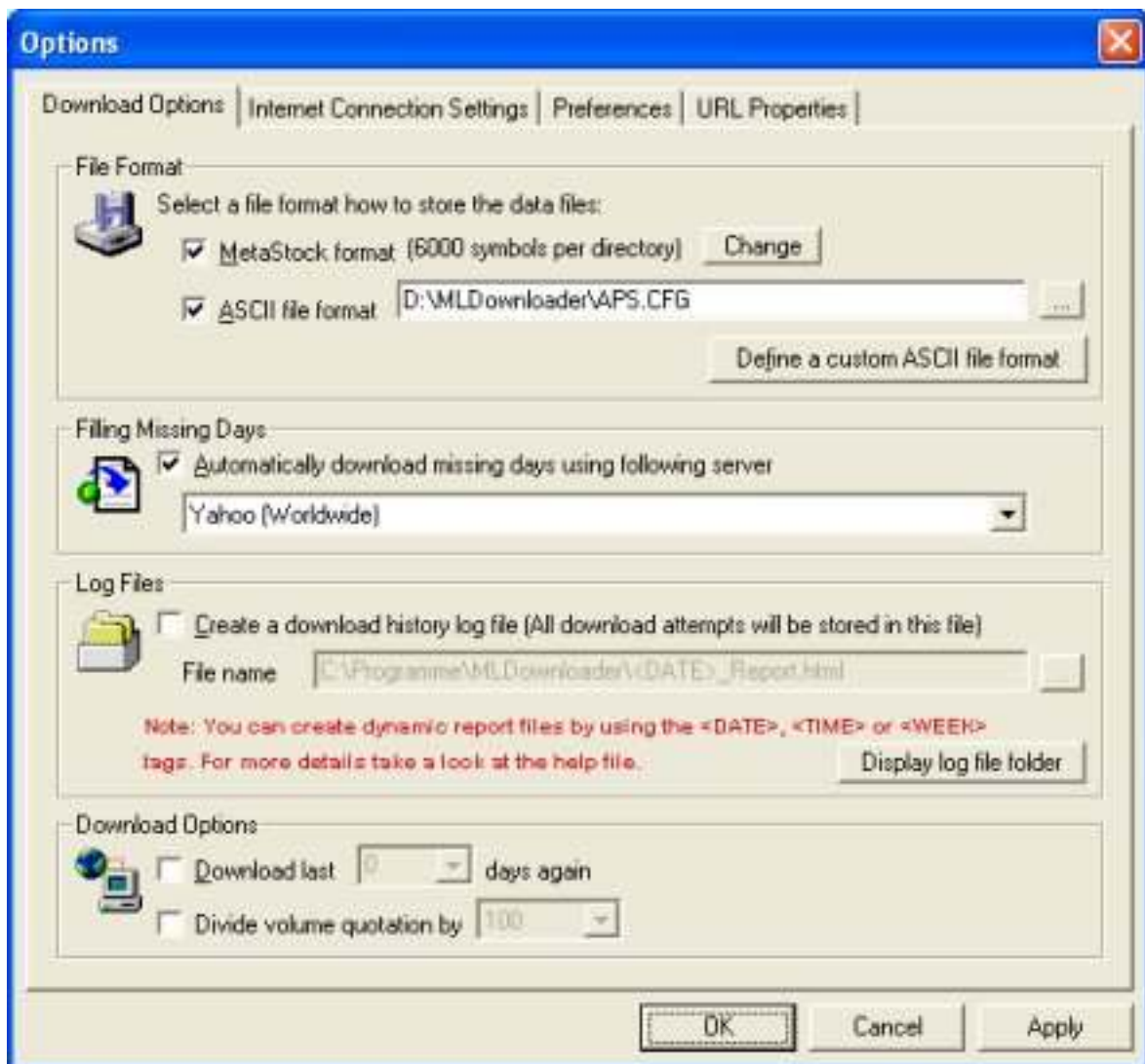
If you want to delete all duplicate securities of one symbol list you only have to select one entry of this symbol list. Afterwards you have to click on the button "Select all entries of selected symbol list". MLDownloader will select all the other entries of this symbol list automatically.

Download

Options Dialog

Download Options

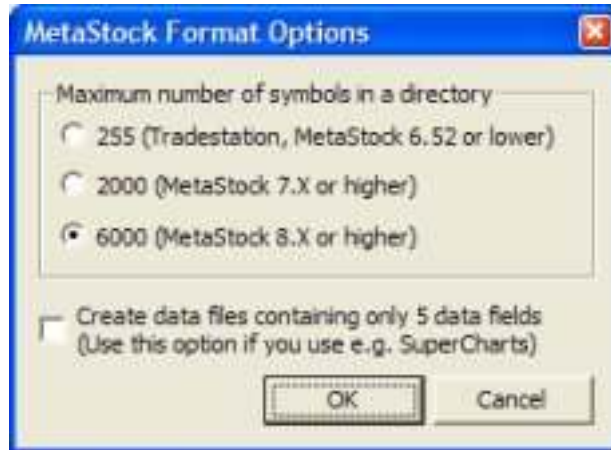
To open the "Download Options" dialog, click on the "Download->Options" menu entry.



("Download Options" dialog)

MetaStock file format

Select this option to store the data in MetaStock format. MLDownloader supports the old MetaStock format (255 symbols per directory) as well as the new MetaStock format (6000 symbols per directory) Moreover, you can create MetaStock data files containing only 5 data fields. (Date, High, Low, Close, Volume) Some old chart programs can only read MetaStock files having 5 data fields. To make changes on the Metastock format, click on the "Change" button. The "MetaStock Format Options" dialog will appear:



("MetaStock Format Options" dialog)

ASCII file format

Select this option to store the data in the form of ASCII files. You are able to define the format of the ASCII files. (Click on "Define custom ASCII file formats" button) Take a look at the "Defining a custom ASCII file format" chapter for more information.

Server

You have to define a server that can be used for downloading missing days. If a server is down, you can easily switch between the servers that are supported by MLDownloader.

Create a download history log file

All download attempts will be recorded if you select this option. A HTML file will be created containing download date, time, parameters used, date ranges and errors occurred during the download.

To create a report file **for each download attempt** use the "<TIME>" tag. (E.g. "C:\MLDownloader Reports\<>TIME>_Report.html"). MLDownloader replaces the "<TIME>" tag with the time when the download was started.

To create a report file **for each day** use the "<DATE>" tag. (E.g. "C:\MLDownloader Reports\<>DATE>_Report.html"). MLDownloader will create a new report file for each day.

To create a report file **for each week** use the "<WEEK>" tag. (E.g. "C:\MLDownloader Reports\<>WEEK>_Report.html"). MLDownloader replaces the "<WEEK>" tag with the day when you start a download the first time. A new report file will be created automatically every seven days.

A report file can be viewed by any Internet Browser and looks like following picture:

27. February 2003, 14:54:33, (historical download)

Download parameters

MetaStock format	YES
ASCII format	NO
Download symbol	^GDAXI
Start date	1.02.2002
End date	27.02.2003
Periodicity	Daily

No errors occurred during the download.

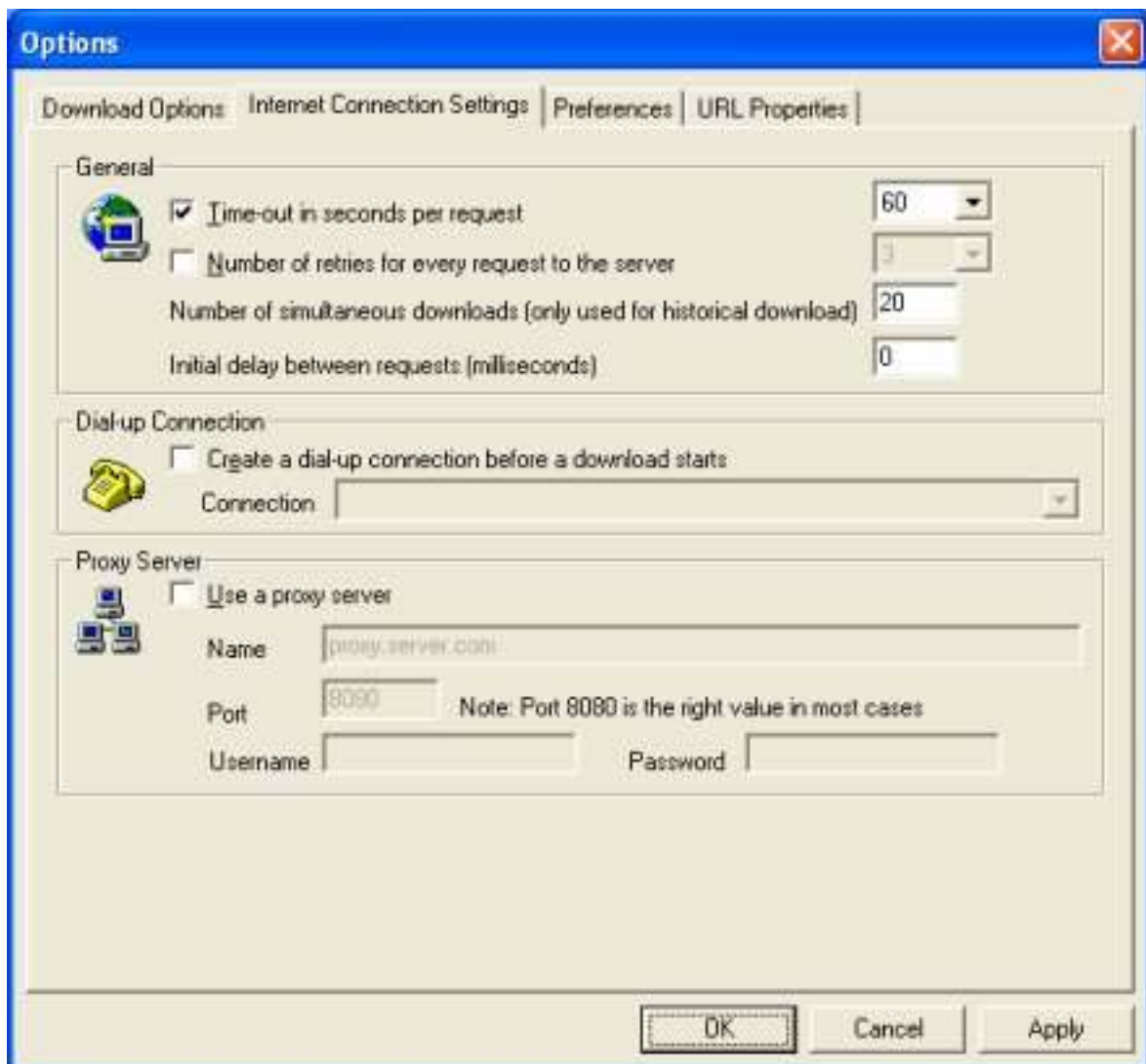
Download last xx days again

MLDownloader will automatically download the last xx days again and checks if the data that is stored on your computer is the same as the data from the server. If the data is different MLDownloader automatically replaces the old values with the newest data from the server.

Divide volume quotation by ...

Select this option to divide the volume quotation of each security by 10, 100, 1000, 10000 or 100000.

Internet Connection Settings Dialog



("Internet Connection Settings" dialog)

Time-out interval

You can select a time-out value (in seconds) to receive a response to a request. If the response takes longer than this time-out value, the request is canceled.

Number of retries

You can set the number of attempts how often the program should try to send a request to the server. Set this value to 6-8 retries if you have a very slow Internet connection.

Number of simultaneous downloads

You can specify the number of securities that can be downloaded at the same time. This value is only used for historical download.

Initial delay

Set a value (in milliseconds) if the program should wait before it send a download attempt to the server.

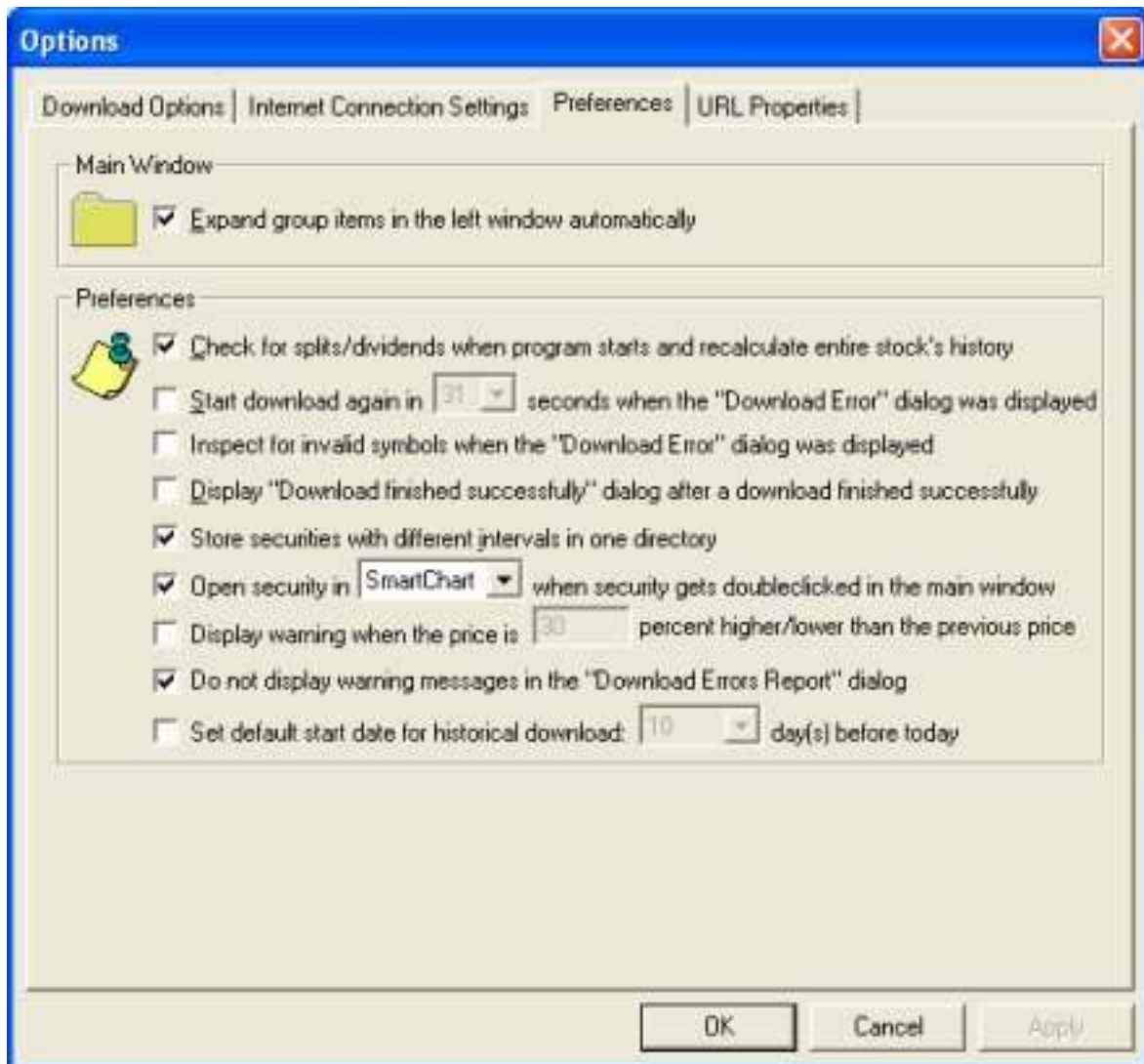
Dial-up connection

A dial-up connection will be created every time when a download starts. The connection will be closed automatically when all securities have been downloaded.

Proxy Server

If your Internet service provider requires you to define a proxy server, then define the Proxy settings according to your network configuration. Enter the server name and the port number. Port "8080" is the right value in most cases. For further details please contact your network administrator.

Preferences Dialog



("Preferences" dialog)

Expand group items

The root nodes of the left main window will be expanded automatically when MLDownloader will be started.

Check for splits/dividends when program starts

MLDownloader informs you when a stock is announced for split or a dividend was distributed. If a stock split is queued up or a dividend was distributed, MLDownloader will automatically recalculate the whole stock's history. So you do not have to worry about dividends and splits anymore.

Start download again in XX seconds

The "Download Error" dialog displays all securities whose last download was unsuccessful. MLDownloader will automatically download the securities again whose last download failed. You can also manually download the securities again, by clicking on the "Download securities again" button in the "Download Error" dialog.

Inspect for invalid symbols when the "Download Error" dialog was displayed

MLDownloader will automatically check those securities where the download failed. If the symbol of a security has changed the program will update the symbol list with the new symbol automatically.

Display "Download finished successfully" dialog

A "Download finished successfully" message box will appear every time when a download completed successfully.

Store securities with different intervals in one directory

A MetaStock directory can contain data of a security with the same name when the time interval is different. E.g. Daily EOD data and 5 minute intraday data etc.

Open security in SmartChart or MetaStock

If you double click on a security in the main window the security will be opened in SmartChart or MetaStock automatically.

Display warning when the price is XX percent higher/lower than the previous price

A warning message will be displayed in the "Download Errors Report" when the last price that was downloaded is XX percent higher/lower than the previous price.

Do not display warning messages in the "Download Errors Report" dialog

Only error messages will be displayed in the "Download Errors Report" dialog. All warning messages will not be displayed.

URL Properties Dialog

The screenshot shows the 'Options' dialog box with the 'URL Properties' tab selected. The 'Settings' section contains three rows for 'Chart', 'News', and 'Report'. Each row has a text box for the 'First URL part', a 'SYMBOL' label, and another text box for the 'Second URL part'. The 'Chart' row has 'http://finance.yahoo.com/q/bc?s=' in the first box and an empty box in the second. The 'News' row has 'http://finance.yahoo.com/q/h?s=' in the first box and an empty box in the second. The 'Report' row has 'http://finance.yahoo.com/q?s=' in the first box and an empty box in the second. A 'Use default URLs' button is located at the bottom right of the 'Settings' section. The 'Custom URLs' section contains a table with five rows. The first row has 'ngs.Calendar' in the 'Name' column, 'com/earning_week.asp?date=20060709&client=cb' in the 'First URL part' column, a checkbox, and 'SYMBOL' in the 'Second URL part' column. The other four rows have empty text boxes in the 'Name' and 'First URL part' columns, checkboxes, and 'SYMBOL' in the 'Second URL part' column. At the bottom of the dialog are 'OK', 'Cancel', and 'Apply' buttons.

Settings		First URL part		Second URL part
Chart		http://finance.yahoo.com/q/bc?s=	SYMBOL	
News		http://finance.yahoo.com/q/h?s=	SYMBOL	
Report		http://finance.yahoo.com/q?s=	SYMBOL	

Custom URLs		
Name	First URL part	Second URL part
ngs.Calendar	com/earning_week.asp?date=20060709&client=cb	<input type="checkbox"/> SYMBOL
		<input type="checkbox"/> SYMBOL
		<input type="checkbox"/> SYMBOL
		<input type="checkbox"/> SYMBOL
		<input type="checkbox"/> SYMBOL

("URL Properties" dialog)

As you may have noticed from browsing the Internet many financial websites display information about a particular stock based on its symbol. Now suppose that you see that a company BigCharts has the following URL for Microsoft(MSFT) stock:

http://bigcharts.marketwatch.com/quickchart/quickchart.asp?symb=msft

You may type in the URL part preceding the stock symbol

http://bigcharts.marketwatch.com/quickchart/quickchart.asp?symb= in the Chart, First URL part in the dialog above. Click OK button and the default URL for displaying the charts will be changed to BigCharts. Sometimes there is URL continuing after the symbol, you may extract it and type in the second URL part.

To set URLs to defaults click the "Use default URLs" button.

Defining a custom ASCII file format

To open the "Download Options" dialog, click on "Download->Options". Then you have to click on the "Define custom ASCII file formats" button to display the "ASCII File Format" dialog.

(„ASCII File Format“ dialog)

Supported fields and column assignments

You use the check boxes to declare which fields you want MLDownloader to create in your ASCII file. For each checked item you must declare in which column that data field is found. MLDownloader does not permit multiple assignments to the same column. The "Date" field and the "Close" field are not optional - the ASCII file must have a "Date" column and a Close column. You can also specify the number of digits that are displayed after the comma.

Check the "Use a custom comma sign" box to use a different comma sign as you have specified in the Control Panel (Regional country settings). If you do not check this box the default comma sign will be used.

Check the "Enclose labels in quotation marks" box if you want that a quotation mark is set before and after the date, time, name and symbol.

Example:"ATML","02/22/02",7.550001,7.18,7.400001

Input File: Detail Settings

You should choose which character would be used as the field delimiter. That character pertains to all columns and data in the file.

You can select the Date field format in your ASCII source. There are different formats supported. **Example 1:** YYYY-MM-DD means that the year is expressed as a four-digit number and that the three fields are separated by a "-" character. **Example 2:** MMDDYY means that the year, month and day are expressed as a two digit numbers each no characters separate the fields.

Check the "Remove zeros at the begin of the date" box to remove all leading zeros of the date. **Example:** The date 000101 (1. January 2000) will be written to the ASCII file as 101.

Start/End line of the ASCII file

Enter a string that will be written at the begin/end to every ASCII file. Use the "\L" string to make a line break.

Example: Line1\LLine2 will be stored in the ASCII file as:

```
Line1
Line2
```

Ascii file name

You cannot enter a static name for the ASCII file. The ASCII file names will be created dynamically. You can select wheter the ASCII file name contains the symbol name and/or the download symbol (a separate ASCII file for each security will be created) or the current date and/or the symbol list name (a ASCII file for all securities of a symbol list will be created).

Examples

- Separate ASCII file for each security:
You have to tick off the "Symbol" and/or "Name" check boxes.
The name of the ASCII file can look like this: `MSFT_Microsoft.txt`
The contents of the file can look like this:
`2004/09/17,27.39,27.53,27.26,27.51,65283000`
`2004/09/20,27.44,27.65,27.33,27.51,51513600`
`2004/09/21,27.45,27.53,27.25,27.26,73874400`
- Separate ASCII file for each day:
You have to tick off the "Date" and/or "Symbol list name" check boxes.
The name of the ASCII file can look like this: `Dow Jones 30`
`Industrials_20040923.txt`
The contents of the file can look like this:
`2004/09/21,^DJI,10204.52,10291.39,10159.54,10244.93,13250000`
`2004/09/21,MMM,81.27,81.80,80.40,81.57,3028100`
`2004/09/21,AA,31.03,31.40,30.90,31.27,5134200`

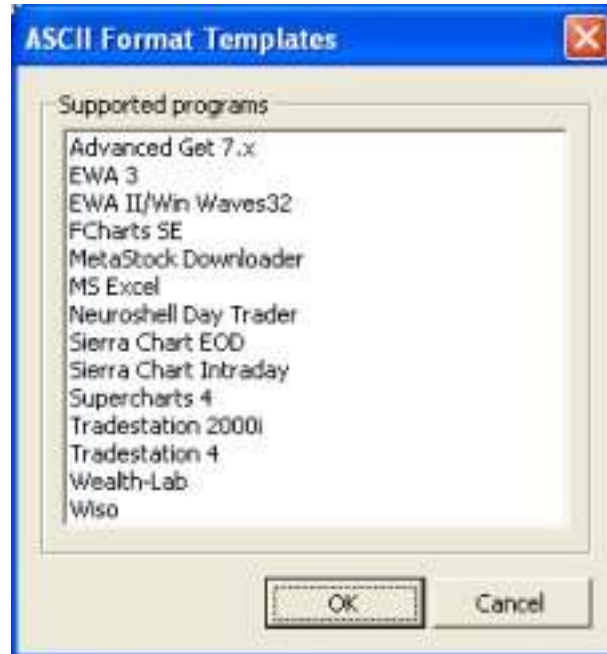
If you want to store data of a security with different intervals in one directory you have to check the option "Add interval/periodicity to the file name". The interval code will be automatically added at the end of the file name. The ASCII files can look like this:

- `MSFT_Microsoft_D.txt` (Daily format)
- `MSFT_Microsoft_15.txt` (15 Minute interval)
- `MSFT_Microsoft_30.txt` (30 Minute interval)

At least you have to enter a file extension. E.g. txt, csv etc.

ASCII File Format Templates

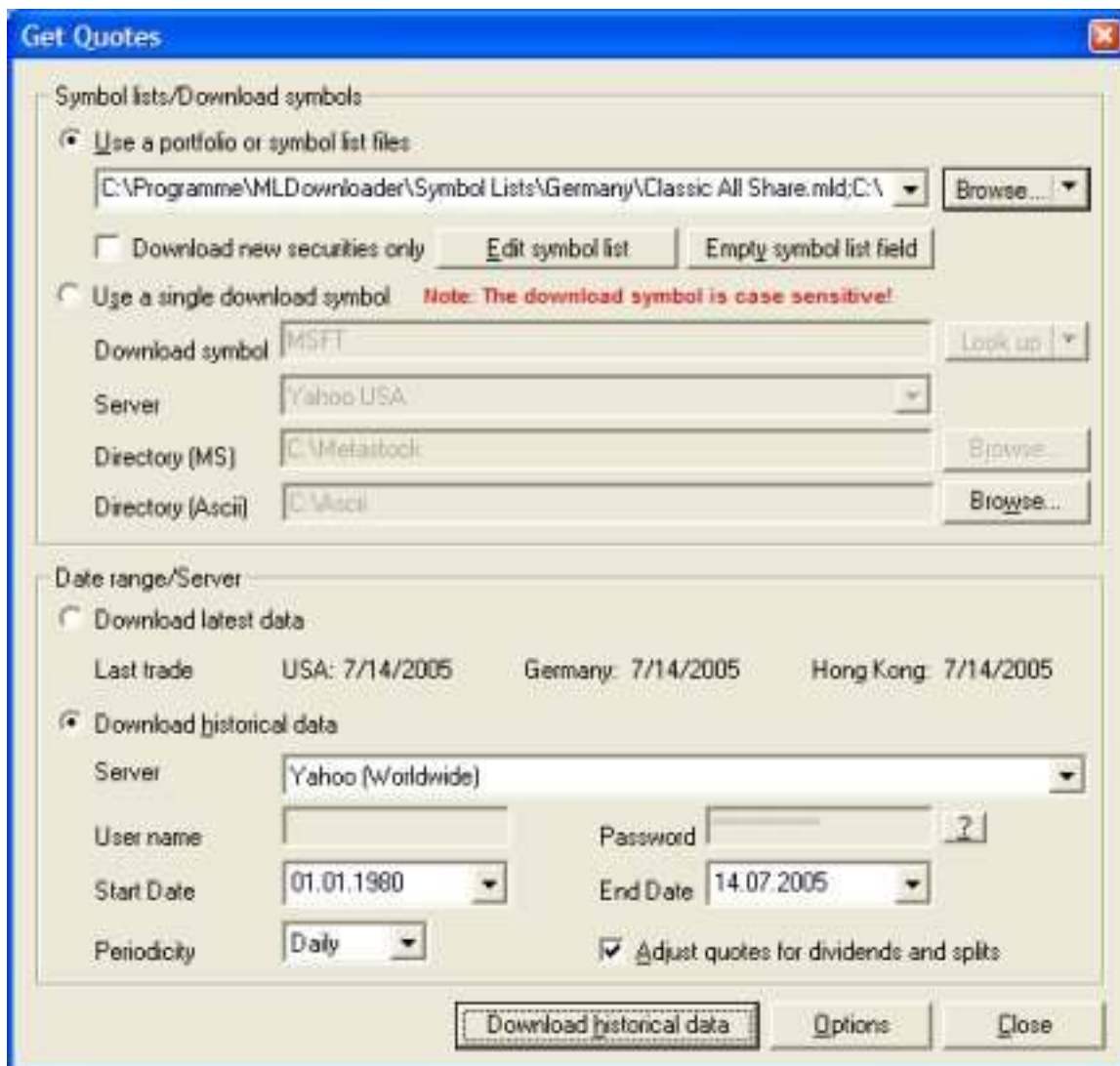
You can use an ASCII file format template. Click on the "Load Template" button to display the "ASCII Format Templates" window. The names of the most common charting/technical analysis software packages are displayed in the dialog. Select a template and click on the "OK" button. Now MLDownloader will store the ASCII files in the format that can be read by the program you have just selected in this dialog.



("ASCII Format Templates" dialog)

Get Quotes Dialog

To download end of day (EOD) or historical data click on "Download->Get Quotes". The dialog shown below will appear.



("Get Quotes" dialog)

Downloading latest data (EOD data)

If you want to make a download using a symbol list select the "Use a portfolio or symbol list files" option. Click on the "Browse" button and select one or more symbol lists you want to download. The MetaStock or ASCII files will be stored in the directory that is defined in the symbol list file. By default MLDownloader stores the data in the subdirectories of "C:\MetaStock" resp. "C:\Ascii". Please take a look at the chapter "Creating/Editing a symbol list" if you want to know how to change the directory where the data is stored.

Note: You can enter more than one symbol lists in the "Symbol list(s)" field. So you are able to download several symbol lists at the same time.

You can also download quotes using only one download symbol. Check the "Use a single download symbol" option and enter a download symbol select a server and specify a directory where the data can be stored. If you do not know the name of a download symbol click on the "Look up" button to get a list of download symbols. Enter the download symbols in the form "Symbol1+Symbol2+Symbol3" (e.g. MSFT+NET+AXP) if you want to download multiple securities at the same time. (This feature can only be used to download EOD data, not historical data)

Select the option "Download latest data" and click on the "Download latest data" button to start the download.

Downloading historical EOD data

To download historical quotes select the "Download historical data" option and enter a start/end date.

You can use the Yahoo and the MSN.com server to download historical quotes for free. The "Quote.com" server is **not** free.

Select the "Download adjusted Close prices" to download close prices that are adjusted for dividends and splits.

Downloading historical intraday quotes

Historical intraday quotes are only provided by the "Quote.com" server. If you download historical intraday quotes the start and end date is ignored. You will get a maximum of 500 quotes. This is a server limitation. Historical intraday quotes are only available for US and Canadian markets.

To use the "Quote.com" server you have to sign up for a "Open LiveCharts™ Basic" subscription at <http://www.quote.com> for \$ 9.95/month if you want to use this server. This subscription allows you to download historical intraday data, historical EOD data and Futures data.

Note: The free demo account of "Quote.com" will not work.

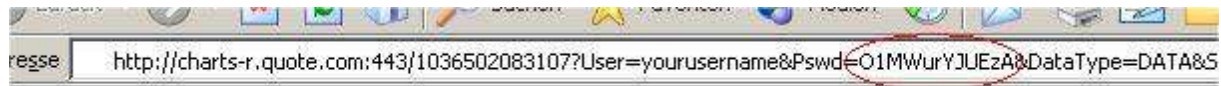
After you have signed up you will receive a user name and password. You have to enter the user name and password in the "Get Quotes" dialog. Quote.com can only use your coded password. Following steps are necessary to find out your coded password:

Log in on Wuote.com and go to following URL:

<http://finance.lycos.com/home/livecharts/default.asp?symbols=NASDAQ%3AMSFT&origsymbols=msft>

Now click on the Chart button. Select the menu "Export Chart -> Bardata to Ascii Text".

A new browser window with the following URL will be opened:



Your coded password is the string after the "&Pswd=" tag. In that case the password is "O1MWurYJUEzA".

Note: If you want to download historical quotes for European securities you have to use the US download symbols for these securities. You can look up US download symbols at: <http://finance.yahoo.com/>. You also have to use the "Yahoo" server. MSN, Quote.com and Wallstreetcity provide only data for US and Canadian securities. Historical intraday quotes can only be downloaded for the US and Canadian securities.

Filling missing days (e.g. 21th June 2005 until today)

If you have some days missed, MLDownloader automatically fills the missing days. It is not necessary to define a start and end date. MLDownloader checks the last date and fills the missing days if required. (Do not check the "Download historical quotes" check box!)

Filling gaps (e.g. 2nd June 2005 until 14th June 2005)

Let us assume that you have a gap between the date 02/06/2005 and 14/06/2005. The last record of the data file is 18/06/2005.

To fill the gap you have to select the "Download historical data" option. Use 02/06/2005 as start and 14/06/2005 as end date. Click on "Download historical data". MLDownloader downloads the missing days and stores the price records in the right sequence.

Download new securities only

If this option is selected MLDownloader only downloads securities that do not exist in the data directory but exist in the symbol list file. This option is useful if you have added one or more securities to a symbol list and want to download the data of the new securities only.

Example:

You have a data directory containing following securities: MSFT, DJI and IBM. A new security was added to the symbol list. Now the symbol list contains the symbols MSFT, DJI, IBM and INTC. The history of MSFT, DJI and IBM is already stored in the data directory. Therefore there is no need to download the data of these securities again. If you perform a download of the symbol list and select the "Download new securities only" option then data for INTC will be downloaded only.

Note: This feature only work for MetaStock files.

Adjusted Close Price

Data is adjusted using appropriate split and dividend multipliers, adhering to Center for Research in Security Prices (CRSP) standards. Split multipliers are determined by the split ratio. For instance, in a 2 for 1 split, the pre-split data is multiplied by 0.5. Dividend multipliers are calculated based on dividend as a percentage of price, primarily to avoid negative historical pricing. For example, when a \$0.08 cash dividend is distributed on Feb 19 (ex-date), and the Feb 18 closing price was 24.96, the pre-dividend data is multiplied by $(1 - 0.08/24.96) = 0.9968$. Below is a detailed example of adjusted close calculations.

Example: Adjusted Close Calculations

2/13/03 Close = 46.99
2/14/03 Close = 48.30
2/18/03 Split = 2:1
2/18/03 Close = 24.96
2/19/03 Cash Dividend = 0.08 (ex-date)
2/19/03 Close = 24.53

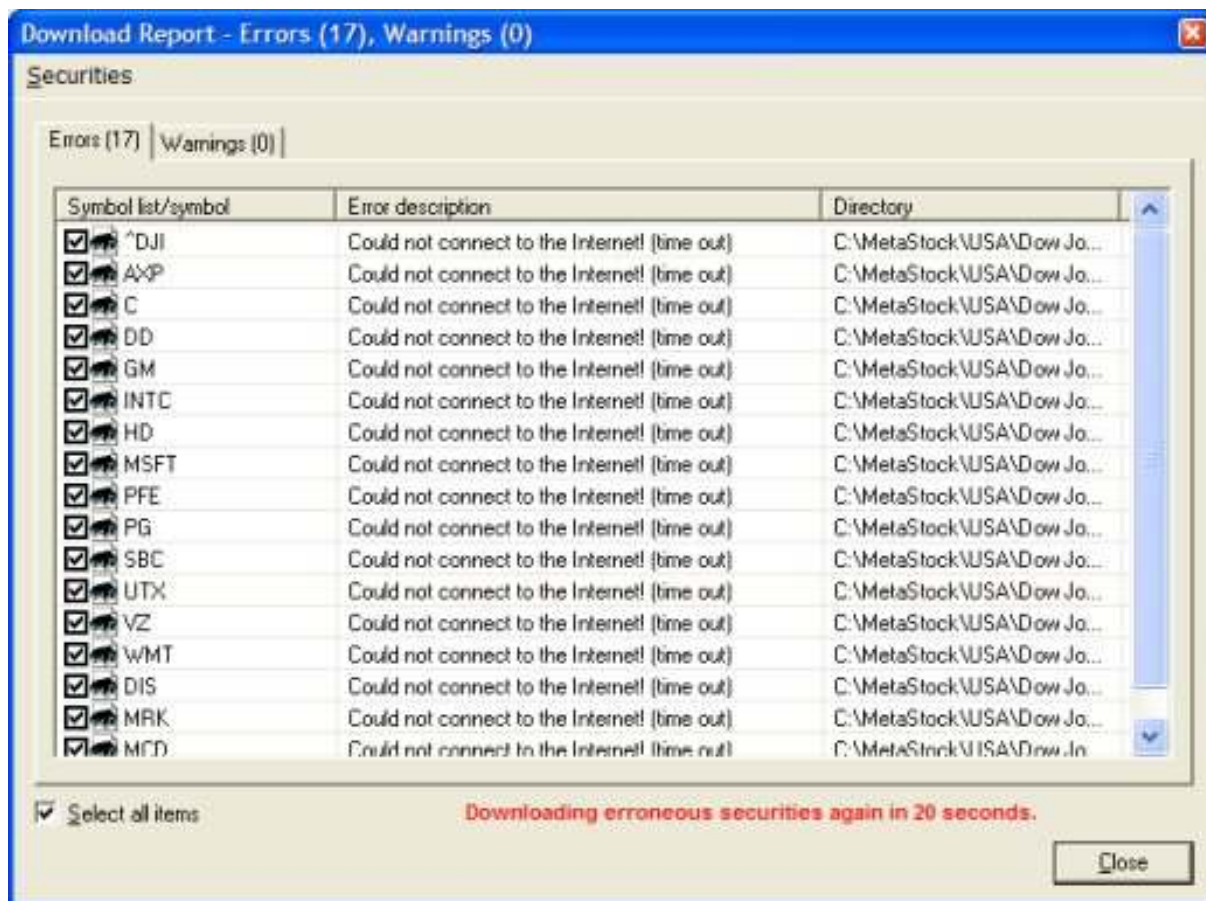
Split Multiplier = 0.5
Dividend Multiplier = $1 - (0.08/24.96) = 0.9968$

2/13/03 Adj. Close = $0.5 * 0.9968 * 46.99 = 23.419816$
2/14/03 Adj. Close = $0.5 * 0.9968 * 48.30 = 24.07272$
2/18/03 Adj. Close = $0.9968 * 24.96 = 24.880128$
2/19/03 Adj. Close = 24.53

If a dividend or split has occurred, MLDownloader downloads the whole entire stock's history again considering the splits/dividends. (Currently this works for US stocks only) Please make sure that you tick of the "Check for splits/dividend when program starts and recalculate entire stock's history" option in the "Download->Options->Preferences" dialog.

Displaying erroneous data/Retrying download attempts

After the download of one or more securities failed, the "Download Errors" dialog will be displayed.



("Download Errors" dialog)

You can see all securities where the last download attempt failed. The download symbol, the error description and the directory where the securities should be stored are displayed.

Download again

Click on "Securities->Download again" if you want to retry downloading the securities. Only the securities that are displayed in the dialog will be downloaded again.

Example: If two securities of a symbol list with 30 symbols failed to download, only the two securities will be downloaded again. (Not the complete symbol list!)

Remove from symbol list

To remove the selected securities from the symbol list, click on "Securities->Remove from symbol list".

Inspect invalid symbols

If you get an error message "No data available (Invalid symbol or wrong start end date specified)" you should use the "Inspect invalid symbols" function. If you call this function (Securities->Inspect invalid symbols) MLDownloader will connect to the Yahoo server and checks if the symbol code on the server was changed. As a result you will get the new symbol code. MLDownloader updated the symbol list with the new symbol code automatically.

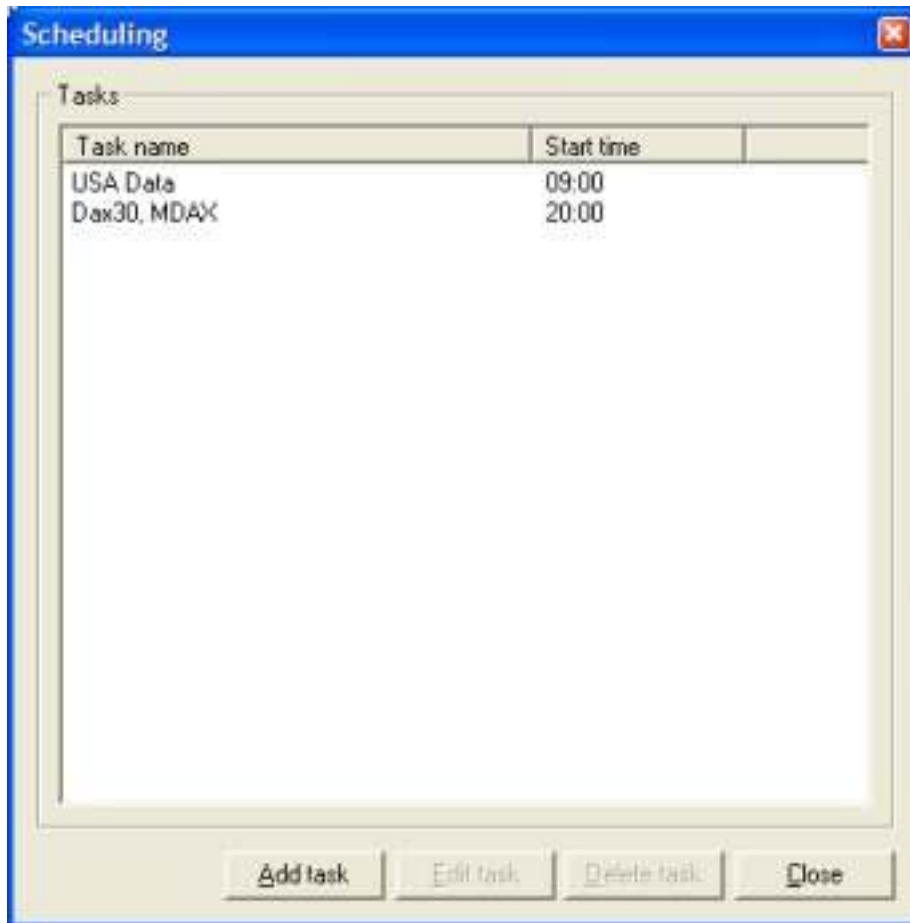
Copy Errors to Clipboard

To copy the errors that are displayed in the "Download Errors" dialog to the clipboard, click on "Securities->Copy Errors to Clipboard". Then you can open any text editor and paste the error messages there.

Scheduling/Autodownload

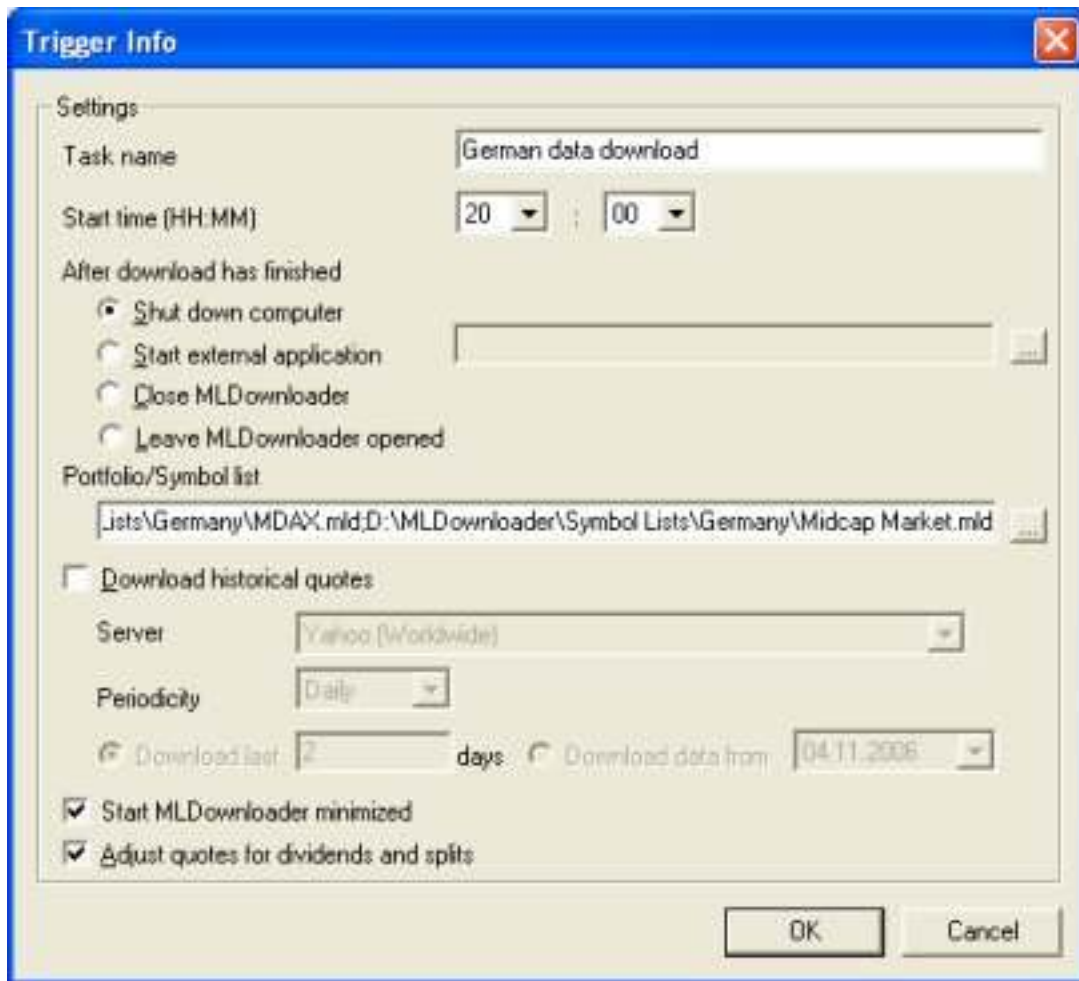
The scheduling feature allows you to start MLDownloader at a specific time. You only have to define the symbol lists you want to use and the quotes will be downloaded automatically.

Click on "Download->Timer" to define the download start times.



("Scheduling" dialog)

Click on "Add task" to add a new task. The dialog shown below will appear.



("Trigger" dialog)

Start time

Select a time when MLDownloader should be started to download quotes.

After download has finished

You can select if MLDownloader should shut down the computer, start an external application (MLDownloader will be closed after the application has been started) or close MLDownloader.

Symbol list

Select one or more symbol lists to download.

Download historical quotes

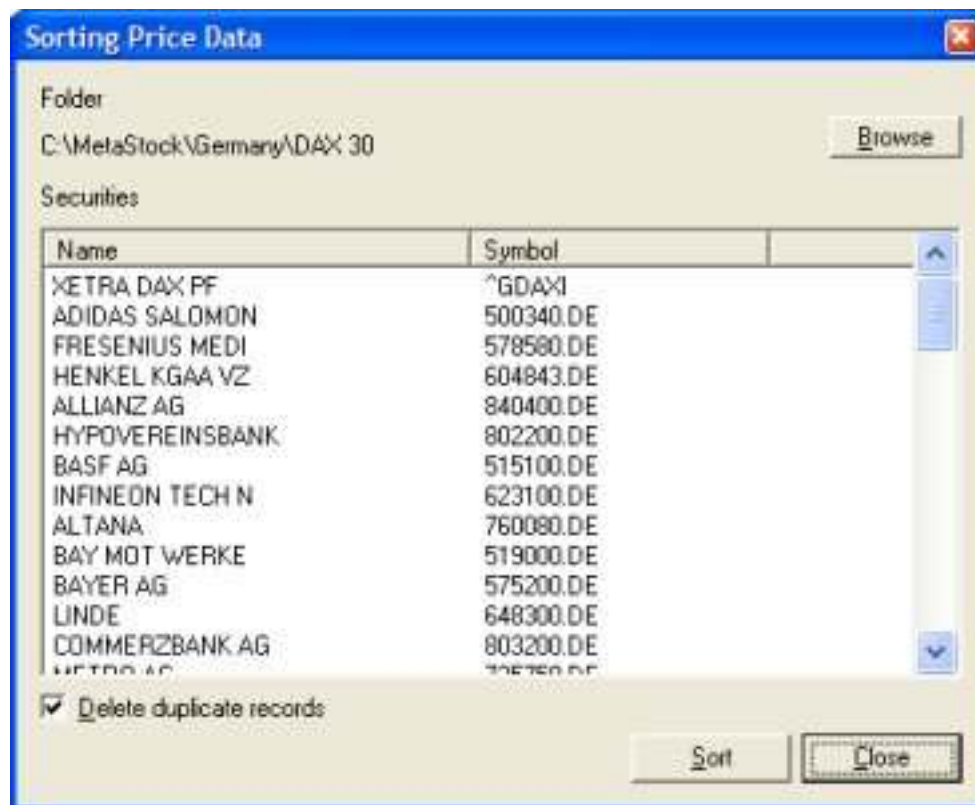
Select the server you want to download from. If you use the "Quote.com" server, make sure that you have entered a valid user name and password in the "Download->Get Quotes" dialog.

Also enter the number of days that the program should download. The end date is always the date when the download occurs. MLDownloader automatically calculates the start date. (E.g. Let us assume that today is the 31/08/2003. If you select "Download last 2 days", MLDownloader will download quotes for, 29/08/2003, 30/08/2003 and 31/08/2003)

Sorting Price Data Dialog

The "Tools->Sort" dialog is used to sort the price data for the selected security(s). The price data is sorted chronologically.

Note: This feature only works for MetaStock™ files.



("Sorting Price Data" dialog)

Sort

Use the Sort command to sort the price data in the selected securities chronologically.

Browse

Choose the Browse button to display the "Select Folder" dialog. Use the "Select Folder" dialog to change the data folder displayed in the "Sorting Price Data" dialog.

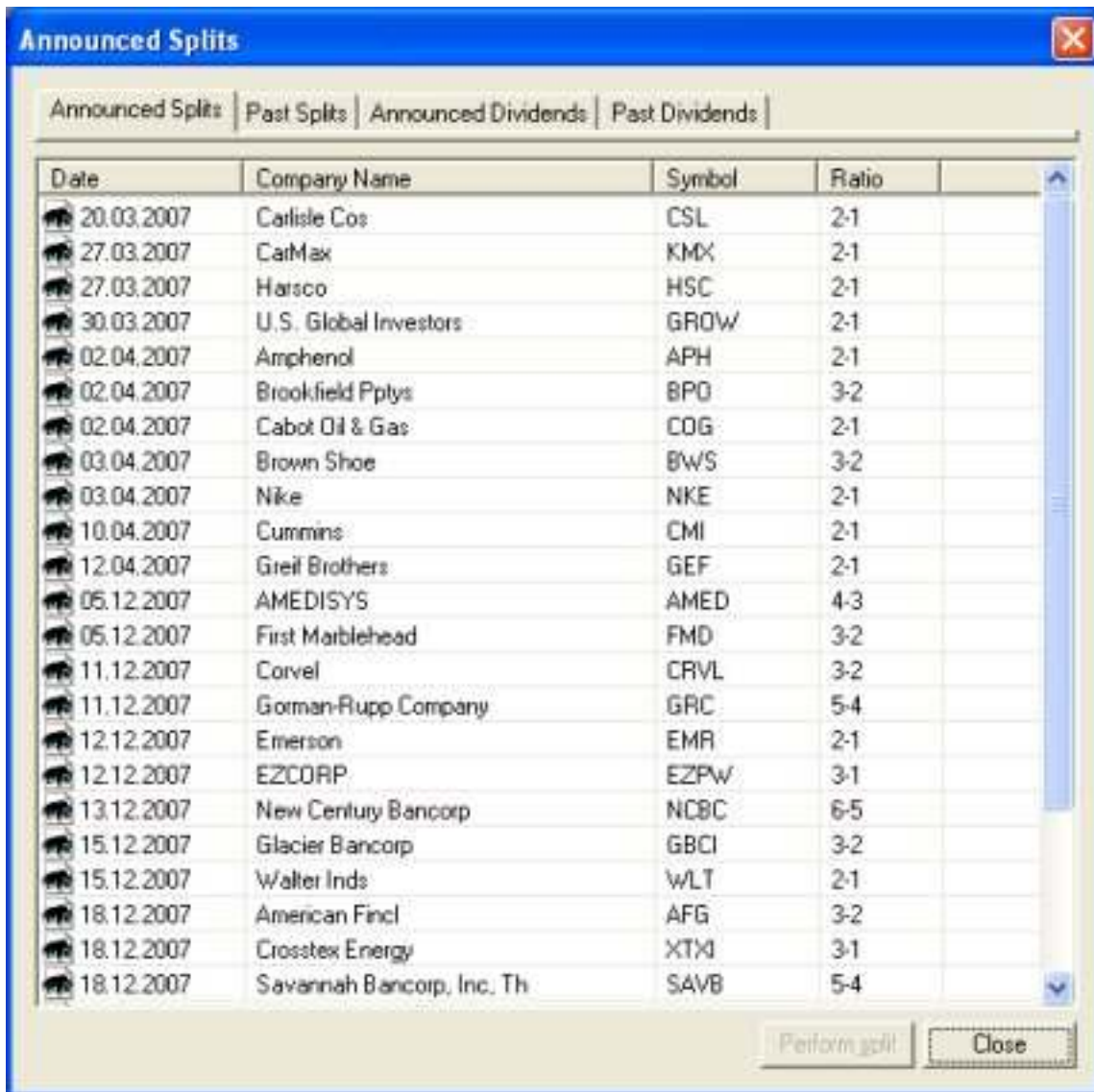
Duplicate records

Select the "Delete duplicated records" check box to remove all duplicate records.

Splits/Dividends

Show Announced/Past Splits/Dividends Dialog

Use the "Tools->Show Announced/Past Splits and Dividends" dialog to receive a list of announced splits and dividends that will be paid. Click on the "Past Splits" tab to get a list of the past splits. Please make sure that you are connected to the Internet. MLDownloader always downloads the latest information from the Trading-Tools.com server. The announced split list shows all stocks that are announced for splits regardless whether you have already performed the split on your computer or not. At the moment this feature works for US stocks only.

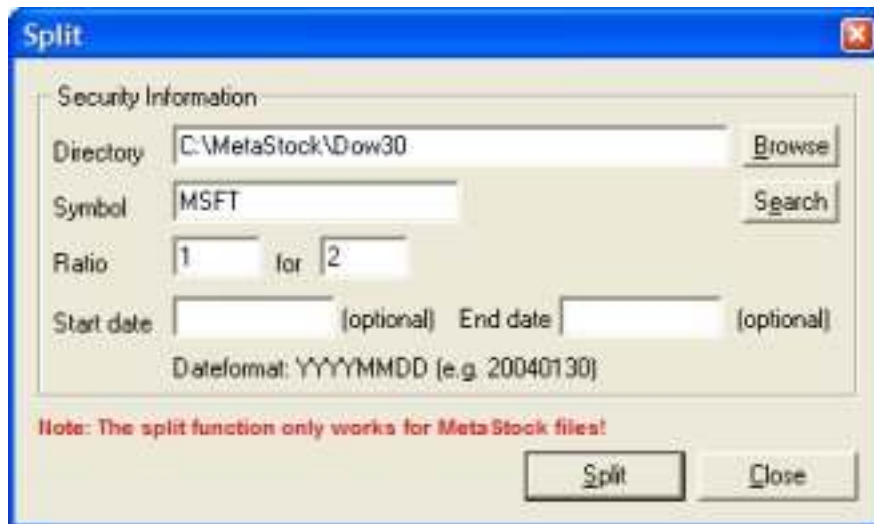


("Announced Splits" dialog)

Select a security and click on the "Perform split" button to perform a split.

Split

The Split function is used to adjust the price data and volume for a stock split. Please use caution when applying this command. Once an adjustment is made, it may be difficult to bring the data back to its original state.



("Split" dialog)

Enter a directory where the security you want to split is located. Also enter the symbol and the ratio. Use the "Search" button if you do not know, where to security is located.

More information

When a stock splits, the historical prices must be adjusted to reflect the split. For example, if XYZ company has a 2 for 1 stock split, shareholders will receive two shares for each share that they own. To keep the total market value of the stock equal, the price per share is reduced by one-half. Therefore shareholders will have twice as many shares at half the price. Stock splits are usually done in order to increase the liquidity of the stock.

When price data is adjusted for a stock split, the volume is also affected. For example, in a 2 for 1 split where prices are cut in half, the volume is doubled so that the market value remains unchanged.

Example

Price records before using Split function (Open, High, Low, Close, Volume):
33.1800 33.2800 32.1300 32.9500 1351801

Using the split function:
Ratio: 2:1

Price records after using the Split function (Open, High, Low, Close, Volume):
16.5900 16.6400 16.0650 16.4750 2703602

Automatic Stock Splits and Dividends Adjustments

If you select the "Check for splits/dividends when program starts and recalculate entire stock's history" option in the "Download->Options->Preferences" dialog, MLDownloader checks for stock splits and dividends automatically each day. (Once per day when you start MLDownloader the first time) If a stock split is queued up or a dividend was paid, MLDownloader will automatically recalculate the whole stock's history. It is important that the stock that is announced for split/dividend must exist in your portfolio; else the program will not be able to perform this operation automatically. At the moment this feature works for US stocks only.

A dialog will appear where you have to confirm whether to recalculate the entire history or not. The dialog will close automatically after 15 seconds and the program will start to recalculate the entire history.



(“Recalualte Entire History” dialog)

Tutorial

Downloading quotes using a symbol list

Open the “Get Quotes” dialog. (“Download->Get Quotes”)

Select the option “Use a portfolio or symbol lists files”. Click on the “Browse” button and select the symbol list “Dow Jones 30 Industrials.mld”. By default this file is located in the “C:\Program Files\MLDownloader\Symbol List\USA” directory.

Click on “Download current quotes”. During the download you will see a status window. By default the data of the symbol list “Dow Jones 30 Industrials.mld” will be stored in the “C:\MetaStock\USA\ Dow Jones 30 Industrials” directory. You can change the directory in the “Symbol List” dialog. After the download has finished you will be able to open the directory “C:\MetaStock\USA\Dow Jones 30 Industrials” with any program that can read MetaStock™ files.

Storing quotes in ASCII files

MLDownloader also offers the possibility to store quotes in ASCII format. To enable this option you have to open the “Download Option” dialog (“Download->Options”) and select the option “A custom defined ASCII file format”. If you want to change the ASCII file format click on “Define custom file formats”. Close the dialog and repeat the steps above. By default the quotes of the symbol list “Dow Jones 30 Industrials.mld” are stored in following directory: “C:\ASCII\USA\ Dow Jones 30 Industrials”.

Manually filling gaps

Let us assume that you have a MetaStock™ database containing valid data from 20th August 2000 until 30th June 2001 and from 16th July 2001 until today. As you have already noticed there is a gap from 1st July to 15th July. Following steps are necessary to fill this gap:

- Open the “Get Quotes” dialog. (“Download->Get Quotes”)
- Select the symbol list containing the gap
- Select the option “Download historical data”
- Enter a start date (1st July 2001) and end date (15th July 2001)

- Click on "Download historical quotes"

MLDownloader downloads the missing days and automatically stores the price records in the right sequence.

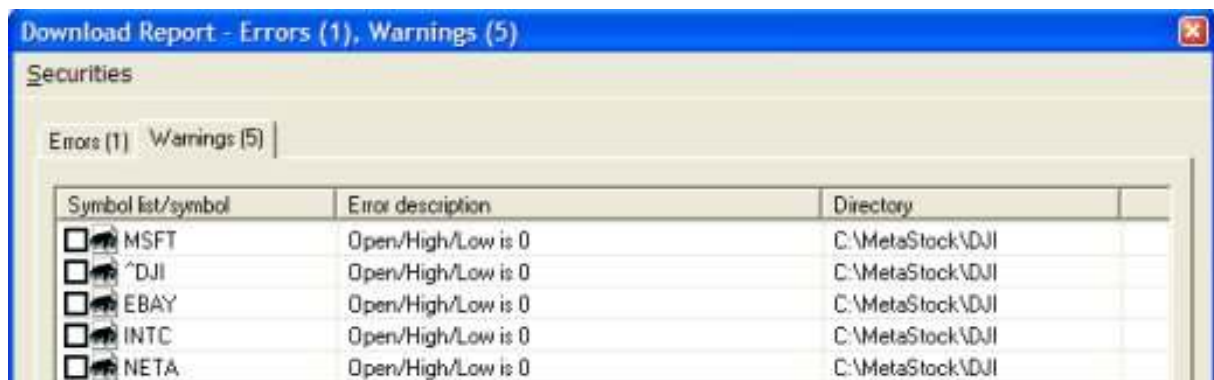
Automatically filling missing days

Let us assume that you have a MetaStock™ database containing valid data from 20th August 2000 until 14th October 2002. As you have already noticed there is a gap from 14th October 2002 until today. Following steps are necessary to fill this gap:

- Open the "Get Quotes" dialog. ("Download->Get Quotes")
- Select the symbol list containing the gap
- Select the option "Download latest data"
- Click on "Download latest data"

Automatically Correct Open, High and Low Prices

During the stock exchanges are opened, the Open, High and Low price is zero. (The Yahoo server only provides the Close price) A warning is displayed in the "Download Report" dialog if the prices are zero.



("Download Report" dialog)

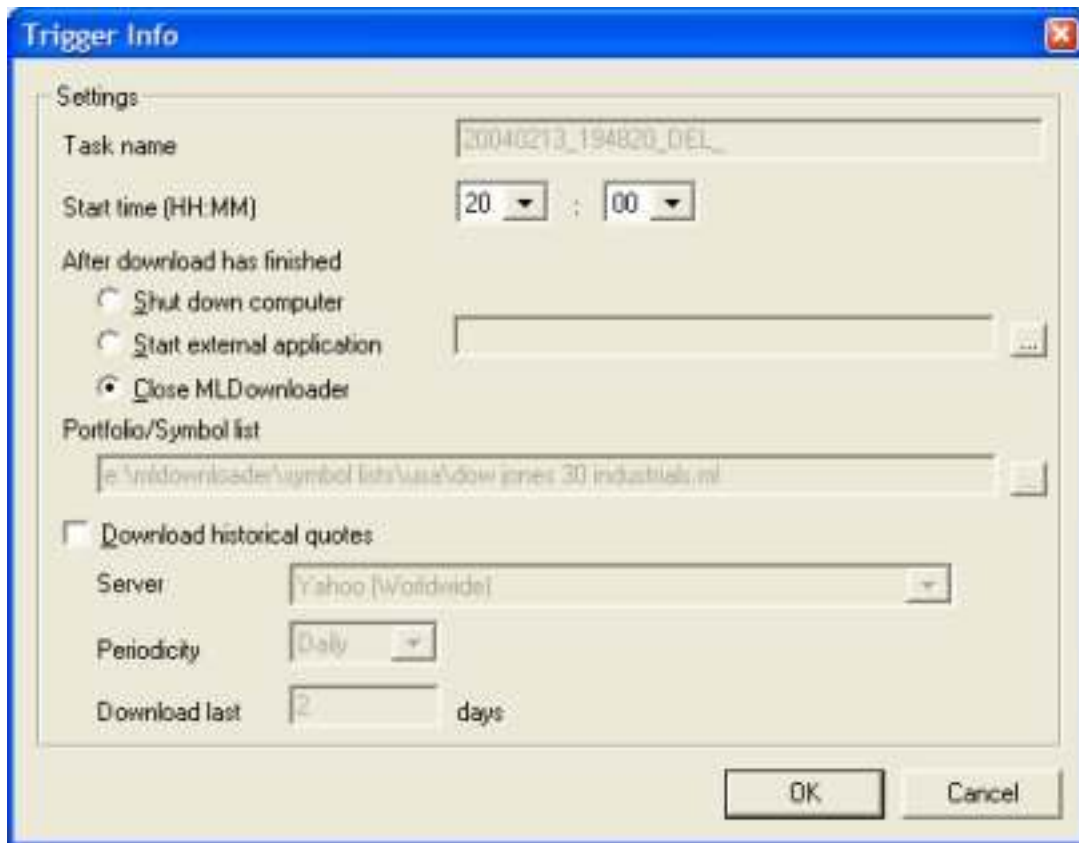
You can use the timer feature of MLDownloader to download the securities where the OHL price is zero again. You only have to specify the time when the stock exchanges will close and MLDownloader will do the rest for you.

Click on "Securities->Timer" menu. Following dialog will appear:



("Select Securities" dialog)

Tick off the option "Warnings" and click on the "OK" button. Following dialog will appear:



(“Trigger Info” dialog)

Enter a time in the “Start time” field when MLDownloader should start downloading the data.

The “Task name” and “Portfolio/Symbol list” fields are disabled. The symbol lists that are displayed in the “Portfolio/Symbol list” field containing all symbols that have no OHL price.

MLDownloader will start automatically at the time you have specified and fills in the Open, High and Low prices automatically.

FAQ (Frequently asked questions)

Which trading software is compatible with MLDownloader?

MLDownloader can store quotes in MetaStock™ format or in form of ASCII files. Therefore any software that is able to read ASCII files is compatible to MLDownloader. Just a few of them: AmiBroker, Advanced GET, Elliot Wave, Hermes, Homebroker, Excel, MetaStock, OmniTrader, VISION 2000, Wall\$treed, etc.

Which data does MLDownloader support?

MLDownloader allows you to download stock quotes, indices, mutual funds, corporate bonds, warrant, FOREX data, etc.

How long is the data history?

That depends upon the symbol how far the historical data goes back. You can check it out at <http://finance.yahoo.com>. The history for FOREX data goes back to January 1999.

Are stock quotes displayed in real-time?

No, they are 15-20 minutes delayed quotes. If you want to have real-time quotes take a look at <http://www.trading-tools.com/real-time-quotes-downloader.htm>. There you will find a tool providing real-time quotes.

How does MLDownloader handle split and dividends?

Data is adjusted using appropriate split and dividend multipliers, adhering to Center for Research in Security Prices (CRSP) standards. Split multipliers are determined by the split ratio. For instance, in a 2 for 1 split, the pre-split data is multiplied by 0.5. Dividend multipliers are calculated based on dividend as a percentage of price, primarily to avoid negative historical pricing. For example, when a \$0.08 cash dividend is distributed on Feb 19 (ex-date), and the Feb 18 closing price was 24.96, the pre-dividend data is multiplied by $(1 - 0.08/24.96) = 0.9968$. Below is a detailed example of adjusted close calculations.

Example: Adjusted Close Calculations

2/13/03 Close = 46.99
2/14/03 Close = 48.30
2/18/03 Split = 2:1
2/18/03 Close = 24.96
2/19/03 Cash Dividend = 0.08 (ex-date)
2/19/03 Close = 24.53

Split Multiplier = 0.5
Dividend Multiplier = $1 - (0.08/24.96) = 0.9968$

2/13/03 Adj. Close = $0.5 * 0.9968 * 46.99 = 23.419816$
2/14/03 Adj. Close = $0.5 * 0.9968 * 48.30 = 24.07272$
2/18/03 Adj. Close = $0.9968 * 24.96 = 24.880128$
2/19/03 Adj. Close = 24.53

If a dividend or split has occurred, MLDownloader downloads the whole entire stock's history again considering the splits/dividends. (Currently this works for US stocks only) Please make sure that you tick of the "Check for splits/dividend when program starts and recalculate entire stock's history" option in the "Download->Options->Preferences" dialog. Alternatively, you can also manually search for splits/dividends by clicking on the "Tools->Search Securities where Dividends/Splits occurred" menu item.

Why is the adjusted close price downloaded by MLDownloader different from the Yahoo adjusted close price?

On the Yahoo server the adjusted close price is available with 2 decimals only. After a few adjustments, it is not sufficiently accurate. Therefore MLDownloader does not use the adjusted close price from Yahoo. Consequently, MLDownloader has its own function to calculate the adjusted close price. The formula for the calculation is exactly the same as Yahoo is using. However, MLDownloader does not round the result to 2 decimals only which leads to lack precision.

Furthermore, MLDownloader adjusts the volume also for dividends.

Example:

Assume a company distributed a \$0.20 dividend in 2004 and its volume were 250,000 on the ex-date. Later in 2005, the company split the stock 2:1. Consequently, the raw data downloaded from Yahoo would now show a \$0.10 dividend in 2004 and 500,000 shares traded on the dividend ex-date in 2004. MLDownloader further adjusts OHLC/V based on this information.

Can I download option data?

Yes. If you use the Yahoo server you can only download end-of-day data, no historical data. Use the Quote.com server to download historical data.

Use following information to find out more information about option symbols:

<http://biz.yahoo.com/opt>

<http://www.quote.com>

How can I download historical FOREX data?

Historical FOREX data are available back to January 1999. A symbol list with all supported currency pairs can be found in the "C:\MLDownloader\Symbol Lists\Forex.mld" directory. To download the data click on "Download->Get Quotes". Then select the "Forex.mld" list using the "Browse" button. Then select the option "Download historical data" and select the "Forex data" server. Click on the "Download historical data" button to start the download.

Why does the "Quote.com" server not work?

You have to sign up for a "Open LiveCharts™ Basic" subscription at <http://www.quote.com> for \$ 9.95/month. This subscription allows you to download historical intraday data, historical EOD data and Futures data. A subscription for the quote.com server is only needed if you want to download historical **intraday** quotes. Historical EOD data can be downloaded from the Yahoo server for free.

Note: The free demo account of "Quote.com" will not work.

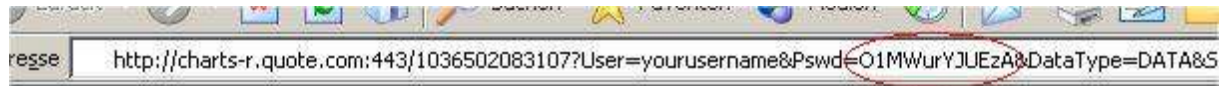
After you have signed up you will receive a user name and password. You have to enter these values in the "Download dialog". Quote.com can only use your coded password.

Following steps are necessary to find out your coded password:

Log in on quote.com and goto following URL:

<http://finance.lycos.com/home/livecharts/default.asp?symbols=NASDAQ%3AMSFT&origsymbols=msft>

Now click on the Chart button. Select the menu Export Chart -> Bardata to Ascii Text. A new browser window with the following URL will be opened:



Your coded password is the string after the "&Pswd=" tag. In that case the password is 01MWurYJUEzA.

I have existing historically data (Metastock format) and want to update this with MLDownloader. Is this possible?

Yes that is possible. Click on the Symbol list->Wizard menu. Then select the option "Create symbol lists using existing MetaStock directories". Click on "Next" and follow the instructions in the "Symbol List Wizard" dialog.

How can I store data of a security with different interval in one directory?

Click on "Options" in the "Download" menu. In the "Options" dialog you have to click on the "Define custom ASCII file format" button. Now you have to check the option "Add interval/periodicity to the file name". The interval code will be automatically added at the end of the file name. The ASCII files can look like this:

- MSFT_Microsoft_D.txt (Daily format)
- MSFT_Microsoft_15.txt (15 Minute interval)
- MSFT_Microsoft_30.txt (30 Minute interval)

At the end of the download the error message "Access denied" occurs.

This error occurs when MLDownloader tries to add new securities to a directory and this directory is currently opened by MetaStock. (or any other program) You have to close the program before new securities can be added to the directory.

When I want to open a security within Metastock, I get the error "Not a Valid Metastock for Windows file"

You have to change the "Files of Type" to "Smart Charts". So the Open dialog will display the list of your securities.

What is the data source of MLDownloader?

At the moment MLDownloader uses following servers:

<http://www.yahoo.com>

<http://www.quote.com>

<http://www.msn.com>

How does MLD cope with different symbols from different services?

The indices symbols will be automatically converted from e.g. "^DJI" (Yahoo) to "\$DJI" (MSN.com). Most of the other symbols are identical.

How can I update my symbol lists?

You can use the update feature of MLDownloader. (Symbol Lists->Update) Please go to the "Keeping Symbol Lists up-to-date" chapter in the help file to find out more details. Moreover, you can use the "Inspect invalid symbols" function to check if a symbol code has changed. For more details please take a look at the "Displaying erroneous data/Retrying download attempts" chapter.

I have added new securities to my symbol list. How can I download the historical data of the new securities only?

Click on "Download->Get Quotes". Make sure that the option "Download new securities only" is selected. Then MLDownloader will only download the securities that have been added to the symbol list.

How can I add a large list of stocks without manually typing them?

There are two ways:

1. Click on "Symbol List->Edit". Afterwards click on the "Import ASCII file" button. Then select an ASCII file that contains all the securities you want to import. Specify a column separator and the columns where the name and symbol information is stored. Then click on import.
2. There is an Excel file named "Convert2MLD.xls" located in the directory where you have installed MLDownloader. (By default this directory is "C:\Program Files\MLDownloader") This Excel workbook allows you to convert stock lists to the MLDownloader symbol list format. You only have to enter all the download symbols in column "A" and the stocks names in column "B". Click on "Convert" and you have a symbol list that can be used by MLDownloader.

How can I download a symbol list using the command line?

First you have to define the lists you want to download. Click on "Download->Timer". Enter a task name and select the lists you want to download. Click on OK.

Now you can run MLDownloader using following command line:

```
C:\Program Files\MLDownloader\MLDownloader.exe -MLD_<TASKNAME>
```

```
C:\Program Files\MLDownloader\MLDownloader.exe -MLD_test
```

You have to replace the "test" with your task name.

To open the "Symbol List Update" dialog from the command line enter following command:

```
C:\Program Files\MLDownloader\MLDownloader.exe -UpdateSL
```

How can I remove invalid stock symbols from my symbol lists without deleting them manually?

After the download has finished the "Download Report" dialog will appear. All symbols that are invalid will be displayed in this dialog. All you have to do is to click on "Securities->Remove from Symbol List". Then MLDownloader will remove all invalid symbols from the symbol lists automatically.



("Download Report" dialog)

How can I remove duplicate securities in my portfolio?

Click on the Portfolio->Search for duplicate Securities menu entry. MLDownloader will display a list with all duplicate securities. Click on the "Remove selected securities" button to remove all duplicate securities.

However, e.g. Microsoft belongs to both Nasdaq 100 and the Dow Jones 30 list. If you delete this symbol one group looks not completed. Therefore it is also possible to store all securities of a portfolio in one directory. Each portfolio has subdirectories of A, B, C,...Z, 0,1,..9 and each symbol's data will be downloaded to those subdirectories based on its start letter or number. Like MSFT will be placed only in the M subdirectory.

On the other hand, you can have different groups for displaying data like Nasdaq100, S&P 500, etc. When clicking each symbol within a group, it will actually load data from the subdirectory which saves its data.

To enable this function you have to click on the "Portfolio->Settings" menu entry. Tick the option "Store securities of all symbol lists in one directory". In the MS and Ascii directory text boxes you have to enter the directories where the data files should be stored.

Where can I enter the unlock key?

Start MLDownloader and click on Help->Register. A dialog appears where you can enter the unlock key.

Registration and Price Information

This copy of MLDownloader is available for a 14 days evaluation period. If you decide to continue using the program, you need to register the program by using one of the methods described below. By registering the software, you are able to continue using it legally, and are supporting our efforts to continually develop innovative products to best serve your needs. If you order via credit card you receive the fully registered version of MLDownloader within 5 minutes.

With a single license you can run the program on two computers that are owned by you. If you want to run the program on more computers then you have to buy additional licenses:

Product price (one time payment, free updates)

Single license: 59.95 Euro (can be used on two computers)

2-5 licenses: 54.95 Euro per license

6-14 licenses: 49.95 Euro per license

15 or more licenses: 35.95 Euro per license

If you decide to buy MLDownloader and SmartChart you get both programs for only 99.95 Euro instead of 119.90 Euro

All discounted software can be ordered online. For each license package we will email you one special license key that you can use to unlock the specified number of installations of the software.

Click on the link below to make your order on a secure web site. You can pay via credit card, wire transfer, cash or check.

<http://shareit1.element5.com/product.html?productid=157007>

Alternatively you can order via phone, fax or postal mail. Please print out the order form.



We also accept orders via PayPal!

After you have placed your order, you will receive an unlock key within 24 hours. Go to <http://www.paypal.com> and log in into your account. Click on "Send Money". Enter "info@trading-tools.com" in the "Recipient's Email" text box. Also enter your name and the name of the program you want to order in the "subject" text box. Click on continue to complete the order.

Benefits of Registering:

- No restrictions on the number of starts
- No download limitation
- Free updates
- Free technical support provided by email. Questions usually answered within 24 hours.

Upgrade

If you are a registered user of MLDownloader you may upgrade at no charge to any newer release. Just download the latest release of MLDownloader and install it.

If the registration code is no longer present on your system just re-enter it like the first time and restart the program.

If for any reason your registration code becomes invalid or lost just send an e-mail to <mailto:info@trading-tools.com> together with the details of your previous registration. You will receive a new code via e-mail at no charge.

Order form

Please print out the following form and fax or mail it to:

element 5 AG / ShareIt!
Vogelsanger Strasse 78
50677 Koeln
Germany

Phone: +49-221-2407279
Fax: +49-221-2407278
Email: register@shareit.com

US customers may also order by calling 1-800-903-4152 (9am-5pm). No technical support can be given at this number. US check and cash orders can be sent to our US office at

ShareIt! Inc.
PO Box 844
Greensburg, PA 15601-0844
USA

Order form for MLDownloader

Program No.: 143484

Last name: _____

First name: _____

Company: _____

Street and #: _____

City, State, postal code: _____

Country: _____

Phone: _____

Fax: _____

E-Mail: _____

How would like to receive the registration key?

E-mail - fax - postal mail

How would you like to pay the product price of € (EURO) 59.95?

Credit card - wire transfer - Euro Cheque - cash

Credit card information (if applicable)

Credit card: Visa - Eurocard/Mastercard - American Express - Diners Club

Cardholder: _____

Card No.: _____

Date of Expiration: _____

Date / Signature _____

Contact

We provide support via email. You can email your questions, comments or bug reports to info@trading-tools.com. Normally all emails are answered throughout the 24-hour day. Please take a look at the FAQ (<http://www.trading-tools.com/faq.htm>). Perhaps your question is already answered there.

If you have a question that could be interested for anyone feel free to post in our forum! <http://forum.trading-tools.com>. If you need a fast answer it is better to contact us via email.

Keep the following tips in mind:

Always make sure that you are using the latest version.

Software Problems: It is easier to solve a software problem if you send us details that are as specific as possible when inquiring about software problems. Also tell us the operating system you are using.

Data Problems: Again, details that are as specific as possible is necessary in order to resolve any data problems quickly. Please specify the stock name and the date in question when reporting a data problem. Specifying what you think is wrong is also useful.

Web: <http://www.trading-tools.com>

Forum: <http://forum.trading-tools.com>

Disclaimer of Warranty

Please note that by using MLDownloader you are accepting the conditions of the Software License and Disclaimer of Warranty given below.

IMPORTANT - READ CAREFULLY

MLDownloader is shareware program. This means:

1. All copyrights are exclusively owned by Trading-Tools.com.
2. Once registered, the user is granted a nonexclusive license to use MLDownloader on one computer (i.e. a single CPU), for any legal purpose, at a time. The registered MLDownloader software may not be rented or leased.
3. To register you must fill out the registration form. For more information please refer to the "Help" files. To purchase, go to <http://www.trading-tools.com/order.htm>.
4. MLDownloader is distributed "AS IS". No warranty of any kind is expressed or implied. You use it at your own risk. You assume responsibility for selecting the software to achieve your intended results, and for the installation of, use of, and results obtained from the software. The author will not be liable for data loss, damages, loss of profits or any other kind of loss while using or misusing this software and/or any kind of data derived.
5. You may not use, copy, emulate, clone, rent, lease, sell, modify, decompile, disassemble, otherwise reverse engineer, or transfer the licensed program, or any subset of the licensed program, except as provided for in this agreement. Any such unauthorized use shall result in immediate and automatic termination of this license and may result in criminal and/or civil prosecution.
6. You are not allowed to sell your unlock key to other persons using eBay or similar platforms.
7. Trading-Tools.com reserves the right to change the price for the program or any service without prior notice. Trading-Tools.com does not refund the purchases of shareware programs which have trial period.
8. If at any time in the future Yahoo!Finance or any other quotes source used in MLDownloader stops to provide the data, Trading-Tools.com will not be liable for the program stops to work. In such case Trading-Tools.com will not refund your purchase neither.
9. MLDownloader relies on free data providers of financial data. Trading-Tools.com cannot be held responsible for the accuracy of the data provide, however we are committed to adding new sources of free data in the future.
10. If you do not agree with the terms of this license you must remove MLDownloader files from your storage devices and cease to use the product.

MetaStock™ is a registered trademark of EQUIS International. (<http://www.equis.com>)

Thank you for choosing MLDownloader!